



DARTMOOR LOCAL PLAN

guiding planning applications in Dartmoor National Park

Settlement Profile:

Lydford

September 2019

This settlement profile has been prepared by Dartmoor National Park Authority to provide an overview of key information and issues for the settlement. It has been prepared in consultation with Parish/Town Councils and will be updated as necessary.



Introduction

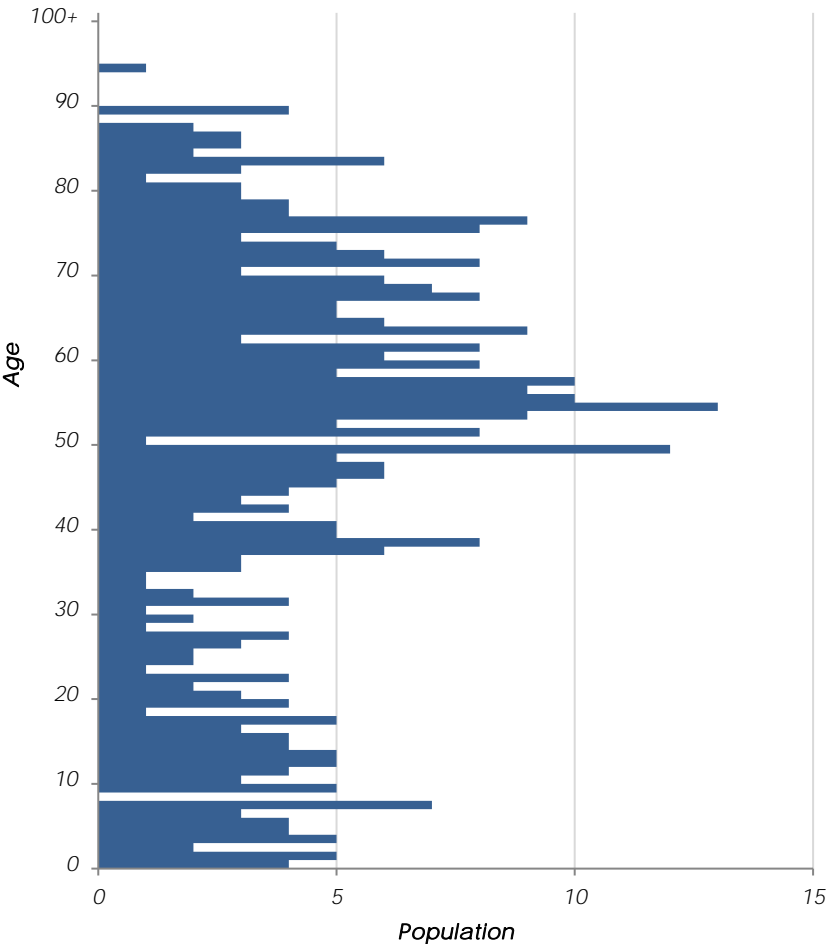
While set against a village history which is of great significance, the buildings of Lydford are, by and large, late, unremarkable and modest, both in size and architecture. What is remarkable about Lydford is its relative lack of modern development and therefore the preservation of its historic form.



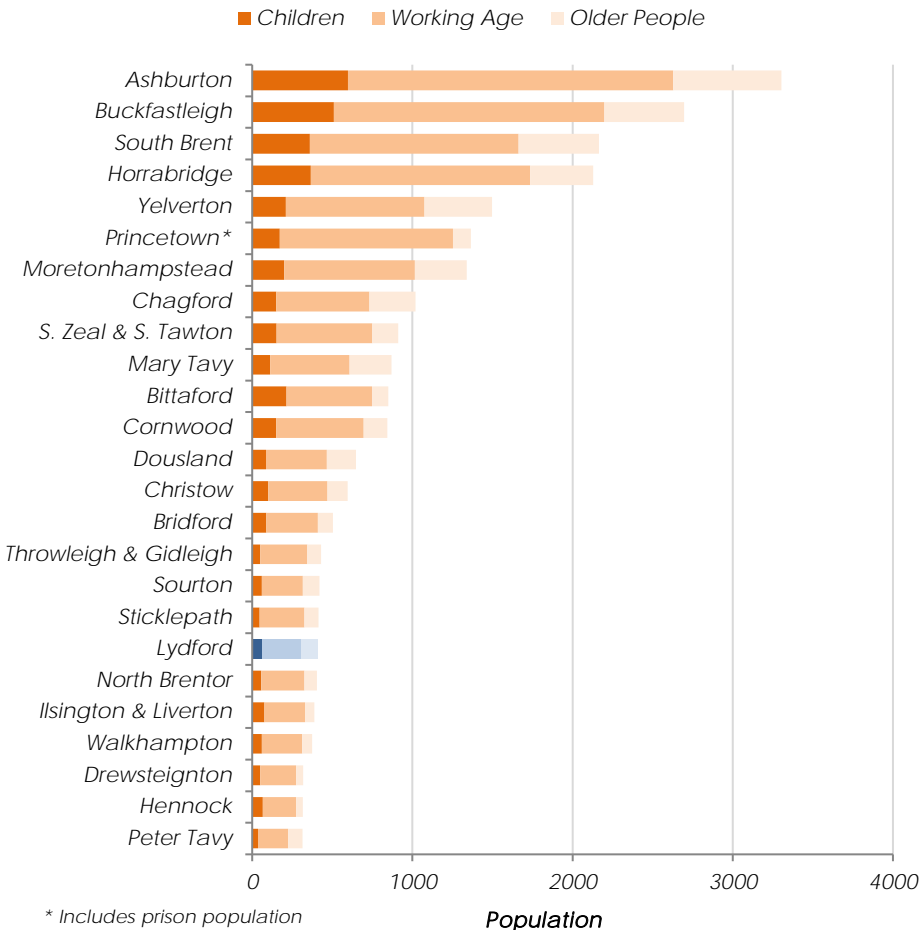
Population 409

Census 2011, determined by best-fit Output Areas

Age Profile (Census 2011)



Settlement comparison (Census 2011)

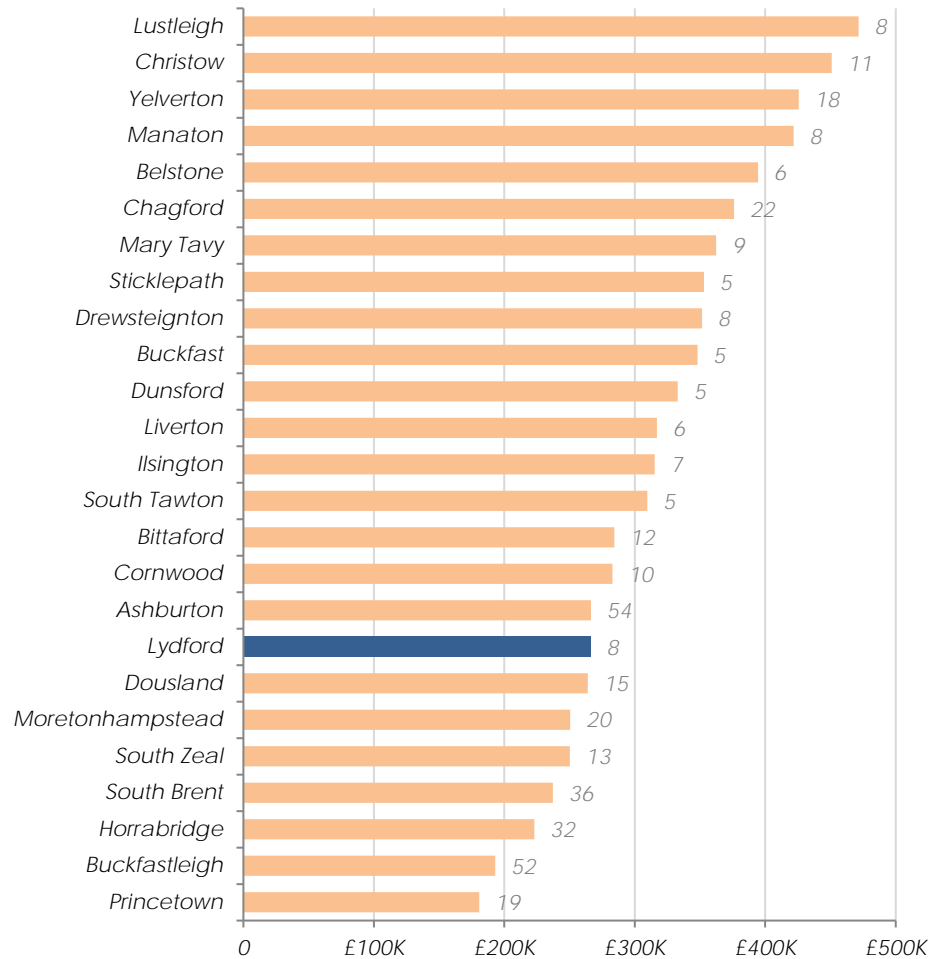


* Includes prison population

Housing Stock

Average House Prices 2016

Excluding settlements with less than five sales, number of sales labelled



Land Registry, 2016

Settlement Profile: Lydford

Identifying Housing Need

Lydford's affordable housing need will be identified from housing need within the following Parishes:

Lydford

Sites allocated for development in current local plan:

No sites allocated for development

No affordable units have been delivered on other sites since 2008

No recent housing survey to identify local need for housing

Issues Paper Consultation (Dec 2016)

- *No comments received from the Parish Council.*
- *No other comments known (respondents may not have submitted address details)*

Infrastructure delivery

We are aware of the following items of infrastructure which are needed and have a reasonable prospect of being funded in the next 20 years:

- *None known*

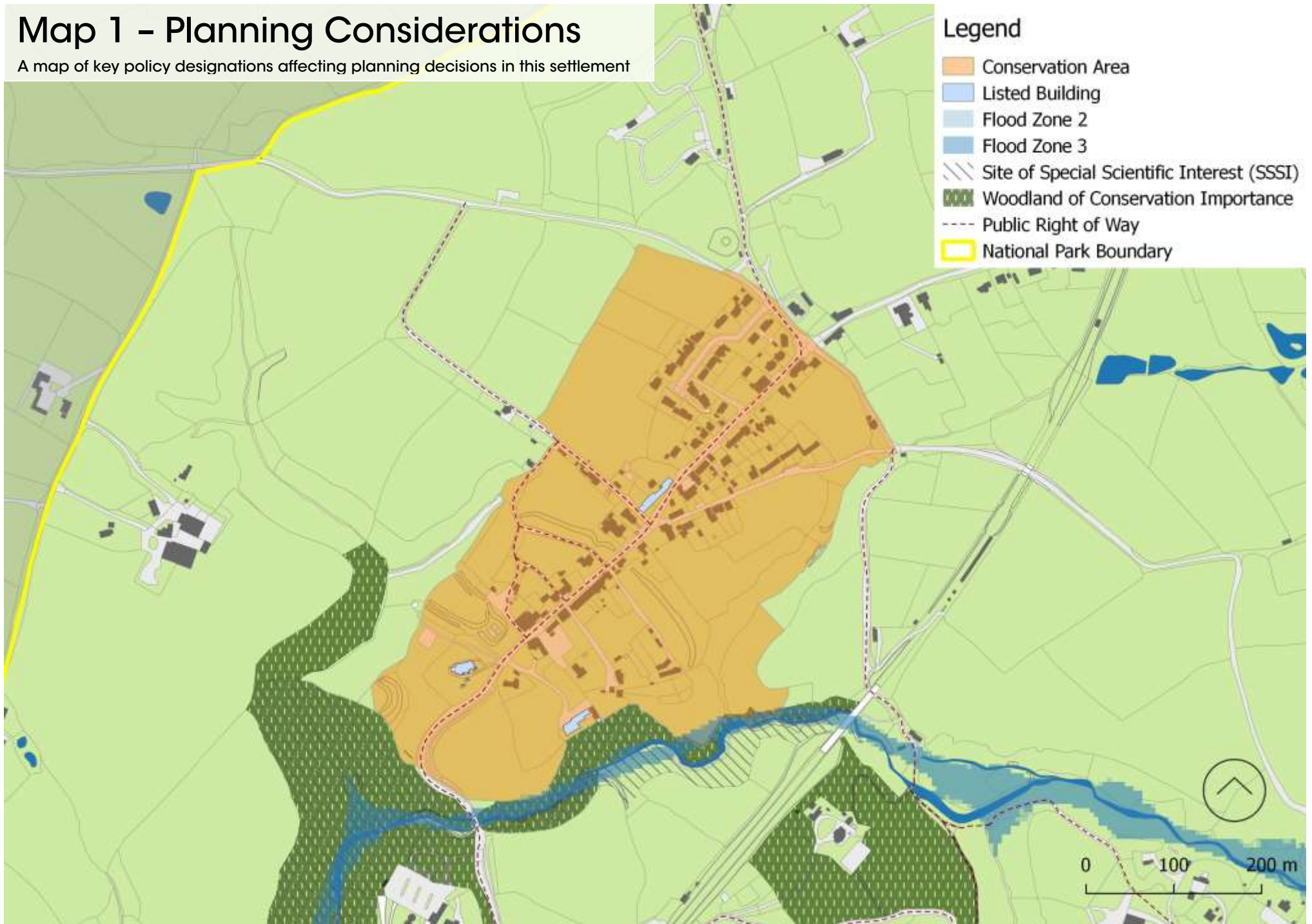
Open Space, Sport and Recreation

We are aware of the following priorities for improving Open Space, Sport and Recreation facilities:

- *None known*

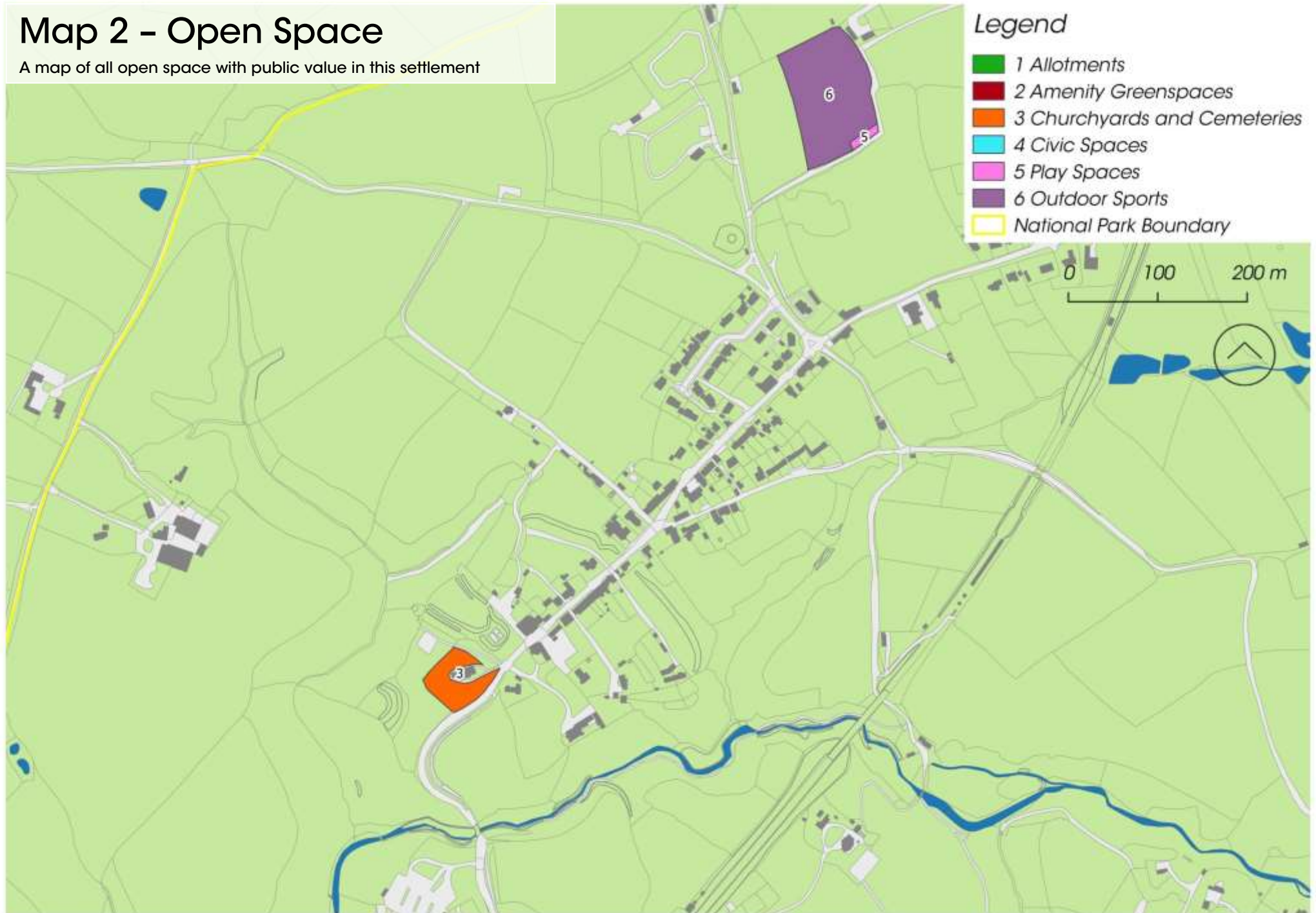
Map 1 – Planning Considerations

A map of key policy designations affecting planning decisions in this settlement



Map 2 - Open Space

A map of all open space with public value in this settlement



Settlement Services and Connectivity

Information on this settlement's services and how well connected it is

Settlement Services

Settlement	U-Road	B-Road	A-Road	Garage (fuel)	Pharmacy	Branch Surgery	Health Centre	Pub	Church	Children's Play Area	Recreation Ground	Regular Bus Service	Primary School	Village Hall	Village Store	Post Office
Lydford	✓	✗	✗	✗	✗	✗	✗	✓	✓	✓	✓	✓	✓	✓	✗	✓

If no, distance to nearest <1km

Method of Travelling to work (Census 2011)

