

# FiPL Guidance for Applicants

This document provides background on the FiPL programme and how Dartmoor National Park Authority the application process works

The Farming in Protected Landscapes programme was launched in 2021 as part of Defra's Agricultural Transition Plan. It provides funding to allow farmers and land managers to work with Protected Landscape organisations (National Park Authorities and National Landscapes teams) to **provide benefits for nature, climate, people and places**. The programme runs until 31 March 2029.



The programme is **delivered by farmers, working in partnership with Protected Landscape teams**. FiPL takes a bottom-up approach - this means that funding supports individual projects proposed by farmers, and approved by Local Assessment Panels, which support Protected Landscapes' local priorities.

**FiPL works alongside, not in competition with existing schemes such as Countryside Stewardship** and adds value where it is most needed. Items and activities which can be funded elsewhere are not eligible for funding through FiPL.

As a **time limited and competitive programme**, early applications are encouraged. You are encouraged to submit an enquiry through the online form as soon as you have read this guidance and a member of the team can get back to you and support in the development of your proposal.

## Applicant eligibility

The FiPL programme is open to a range of applicants, but must be related to land or groups within the National Park

Farmers & Landowners	Dartmoor Businesses & Community Groups	Shared graziers & Collaborative projects
Including tenant farmers and public bodies (including National Park Authorities and Natural England)	Where the proposed activity or works are in support of programme aims and objectives.	See the full guidance <a href="#">here.</a>

## Before you apply

### Check you are eligible

- You meet the definition of an eligible applicant as detailed above
- You are not applying for works that you have already started
- That you have not already received, are applying for elsewhere, or are receiving public funding for the same works as you are applying to for FiPL funding
- That no works are a requirement or condition of planning permission (such as BNG)
- That no elements of your project on which you are applying for grant for are part of an insurance claim
- That you are happy to participate in a project evaluation and if required feed into programme evaluation led by the programme external evaluation team

### Speak to the FiPL team

The FiPL team are here to support applicants in developing project ideas, ensuring proposals align with the priorities of the National Park, they will help you understand what you may need to supply in support of your application and to ensure that what you are applying for is deliverable in the available time frame.

You will be allocated an advisor from the team who will be your point of contact throughout the process.

## Ensure you have all required supporting documentation

You will need to identify the consents and permissions you need as soon as you start your application. This may depend on any designations attached to the land included in the application and on the activities and items that you are applying for in your application.

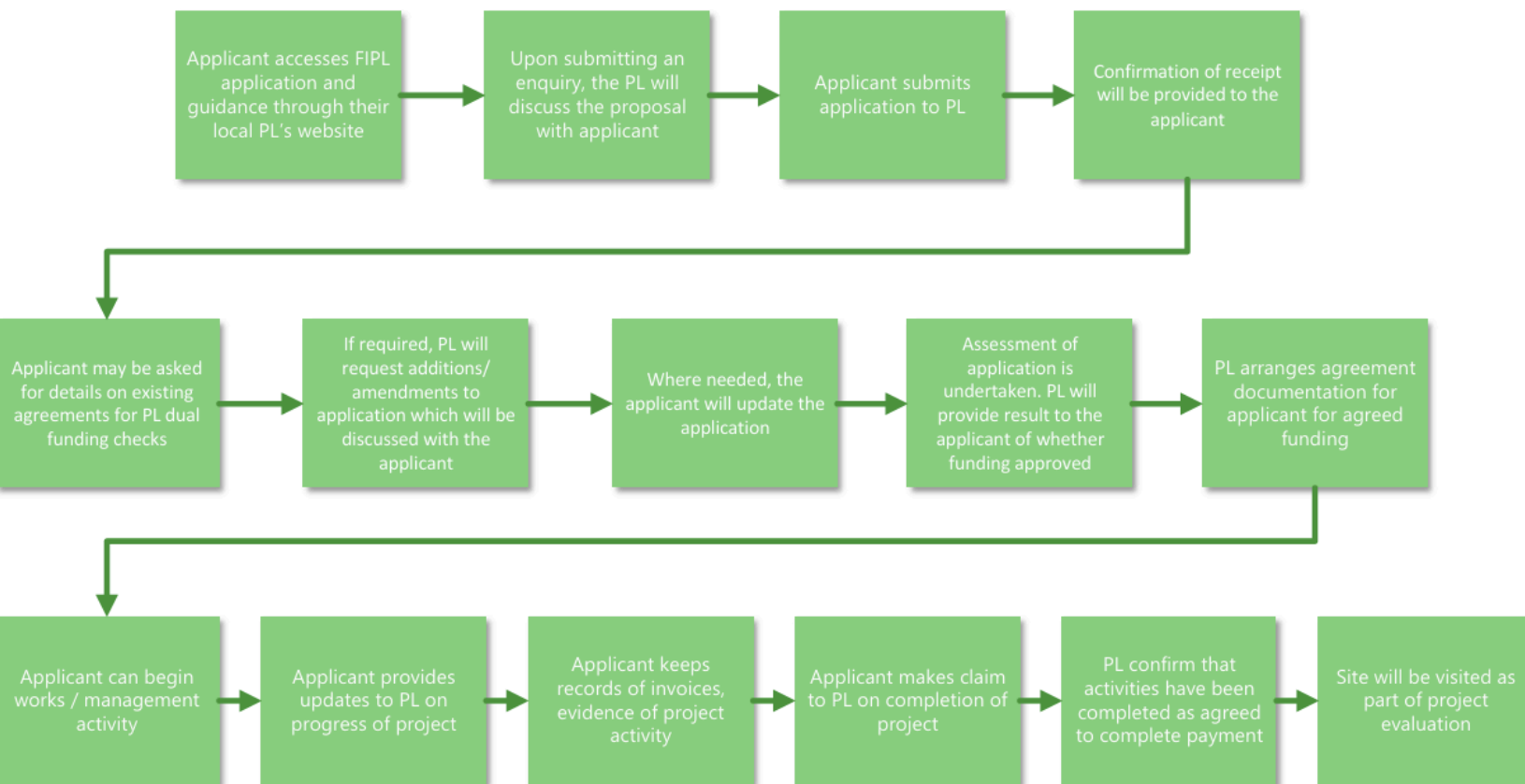
This could include Planning consent, SSSI consent and Landowner permission.

You may also require supporting documents such as land management plans, business plans, collaboration agreements and letters of support.

Check our full [Applicant Checklist here](#).

## Applicant Journey

### FiPL process – Applicant side



## Metrics and Scoring

### How to ensure your project scores highly:

Projects should score highly, dependent on -

1. **The extent to which the project demonstrates that it will contribute towards the Protected Landscape’s management plan priorities/ targets**
2. **Whether the project focuses on priorities identified in the relevant Local Nature Recovery Strategy (LNRS)**
3. **The extent to which the project demonstrates that it will deliver the outcomes of the programme.**

FiPL Outcomes	DNPA Partnership Plan	Protected Landscapes Target and Framework	30by30
<ul style="list-style-type: none"> <li>● Climate</li> <li>● Nature</li> <li>● People</li> <li>● Place</li> </ul> <p><a href="#">See examples here.</a></p>	<ul style="list-style-type: none"> <li>● A Better Response to Climate Change</li> <li>● Better for the Next Generation</li> <li>● Better for Nature and Natural Beauty</li> <li>● Better for Cultural Heritage</li> <li>● Better for People</li> <li>● Better for Farming and Forestry</li> <li>● Better for Business and Communities</li> </ul> <p><a href="#">Read the Plan here.</a></p>	<p><b>10 Targets</b> set by DEFRA</p> <p>From the creation of wildlife rich habitats, supporting the restoration of SSSI’s, encouraging nature friendly farming and creating woodland tree cover.</p> <p><a href="#">See the full list here.</a></p>	<p>Delivering the UK’s 30by30 target on land in England requires urgent and significant action to drive nature’s recovery.</p> <p>The target is for 30% of land and sea supported for nature by 2030.</p> <p>This relate to:</p> <p><b>Purpose / Protection / Management</b></p> <p><a href="#">Read more here.</a></p>

## How applications are scored:

Project outcomes - (40%)	Value for Money - (20%)	Sustainability / legacy of project - (20%)	Ability to deliver - (20%)
<p><b>Climate</b> - Increased resilience in the face of climate change</p> <p><b>Nature</b> - Nature restoration and biodiversity increase</p> <p><b>People</b> - Supporting public access and engagement opportunities</p> <p><b>Place</b> - Celebration of Dartmoor's special qualities and features</p>	<ul style="list-style-type: none"> <li>● Cost effective approach</li> <li>● Need justified and evidenced</li> <li>● Evidence of costs</li> <li>● Why is FiPL the most effective route</li> <li>● Utilised match funding, where appropriate</li> </ul>	<ul style="list-style-type: none"> <li>● Demonstrates lasting positive impact for Dartmoor</li> <li>● Long term delivery of FiPL programme themes</li> <li>● Results in an increase in sustainable farm business resilience</li> </ul>	<ul style="list-style-type: none"> <li>● Clear roles of those involved in project delivery</li> <li>● Viable timeframe</li> <li>● Mechanism for measuring progress</li> </ul>

### Climate



### Nature



### Place



### People



## Metrics and Scoring

### The assessment process:

All applications are assessed by the FiPL team, with higher value applications also being assessed via a Local Assessment Panel (LAP)

<b>FiPL Grant requests under £10,000</b>	<p>Your application will be assessed by a senior member from your Protected Landscape team who has not been involved in providing advice or guidance to your application.</p> <p>They will assess and score your application using the common scoring system. If you submit more than five applications for projects under £10,000 over the course of the programme (from 2021) the sixth and any further applications will be scrutinised at the LAP whatever their value.</p>	FiPL team meet every ~2 weeks to assess finished applications
<b>FiPL Grant requests over £10,000</b>	<p>Your application will be assessed by a Local Assessment Panel made up of experts from across your Protected Landscape, including from the farming and land management community, where your project will be given a score using a common scoring system.</p>	The LAP meet every 6-8 weeks, <b>with final applications completed 2 weeks in advance</b> of the meeting date.

## Payment Rates

If an item or activity has an equivalent rate in another scheme, such as Countryside Stewardship, you will be signposted to that scheme, and only considered for FiPL where you can clearly and **strongly demonstrate why FiPL is the most appropriate programme** for its delivery.

If an activity exists in another scheme that is currently closed or paused, FiPL funding cannot be used to simply fill the gap.

Where there is an equivalent rate in another scheme such as Countryside Stewardship or Farming Investment Fund for the work or activity you want to do, that rate will also be used in the Farming in Protected Landscapes programme.

### **Intervention Rates**

Standard rates (such as CS rates) are funded at 100%. Funding on an 'actual cost' item/activity will be at a percentage intervention rate based on an assessment of commercial gain and benefit to you. Where the project supports a clear commercial gain to you then you can be paid up to 40% of eligible costs, and if the project generates some commercial benefit to you but is primarily delivering public goods, then this could be paid up to 80% of eligible costs.

Only in exceptional cases where the project has no commercial or financial benefit to you could you be paid up to 100% of the eligible costs.

**You can speak to your FiPL officer for advice on payment rates and intervention rates.**



**Farming in Protected Landscapes**

Department for Environment Food & Rural Affairs

**DARTMOOR NATIONAL PARK**

A national grant funding programme that is delivered locally across the UK.

The programme is flexible and farmer-led, allowing projects to adapt to the local context and priorities of your protected landscape.

We are proud to have supported many farmers and land-managers with projects on Dartmoor.

Please submit your [enquiry here](#).