



## DARTMOOR LOCAL PLAN

guiding planning applications in Dartmoor National Park

Settlement Profile:

*Sticklepath*

September 2019

This settlement profile has been prepared by Dartmoor National Park Authority to provide an overview of key information and issues for the settlement. It has been prepared in consultation with Parish/Town Councils and will be updated as necessary.



# Introduction

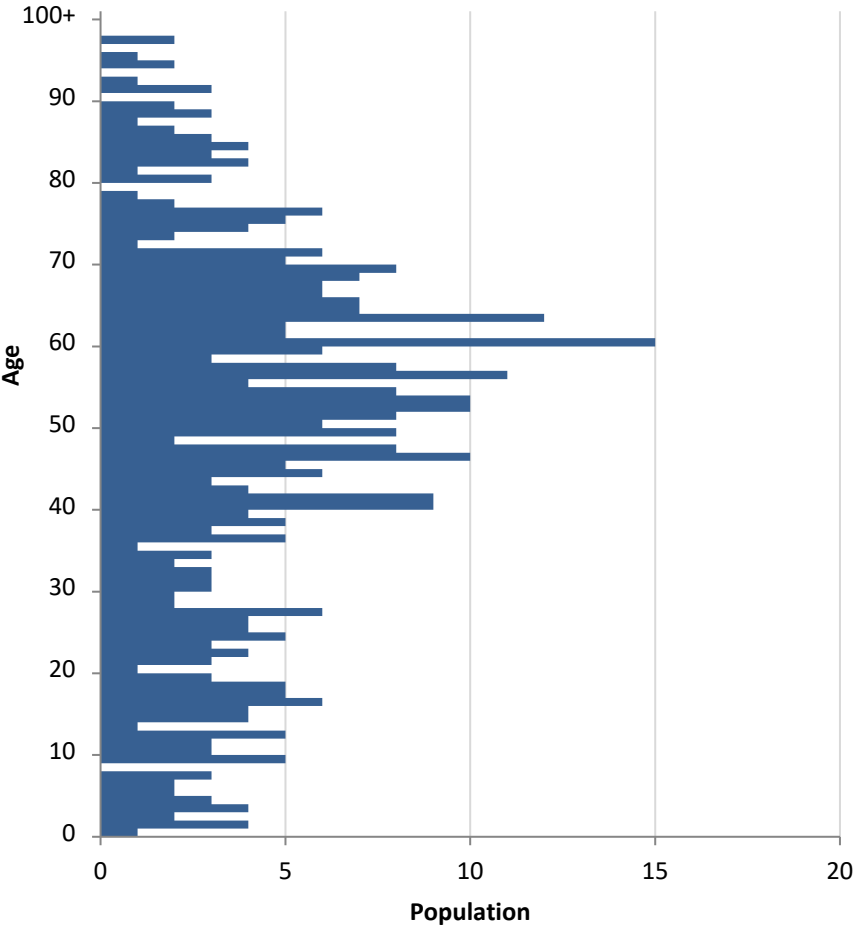
*Sticklepath lies 3 miles east of Okehampton in the valley of the River Taw, on the edge of the high moor. The river provided the energy to power several industries including corn grinding, wool and cloth businesses and, in the 19th century, a successful edge tool manufacturing centre-Finch Foundry. At one time there are believed to have been four mills with at least seven water wheels in the village. Farming and mining also played strong parts in the development of Sticklepath.*



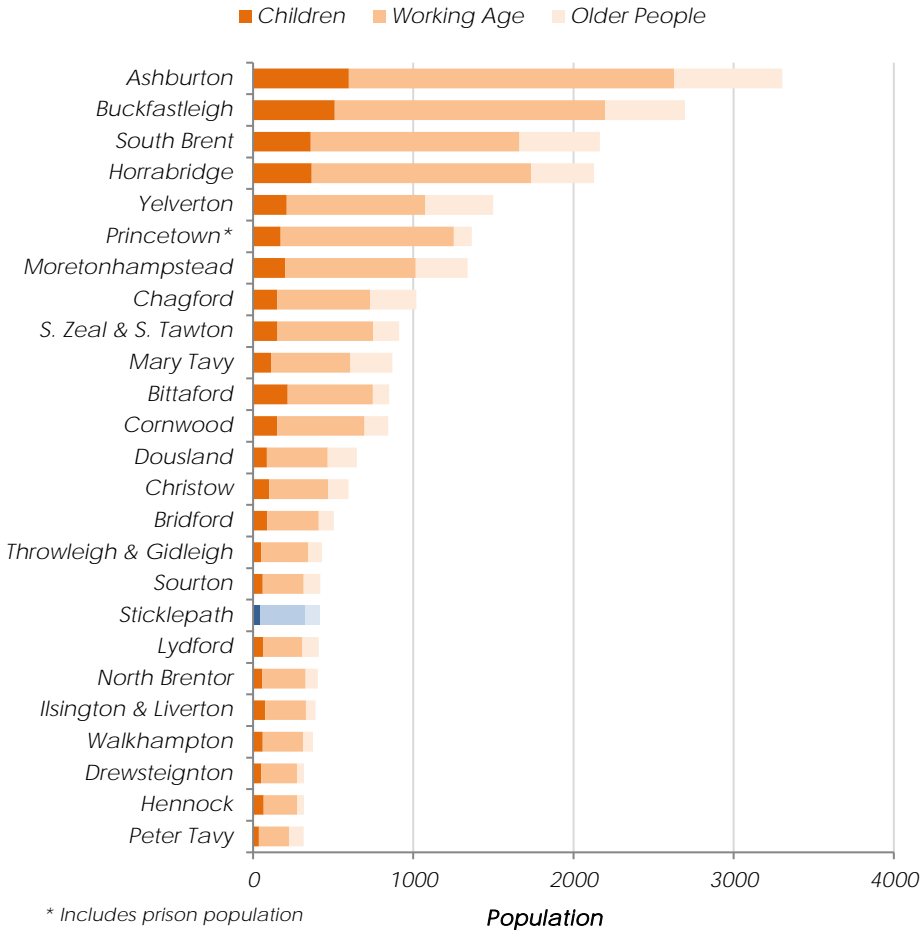
## Population 414

Census 2011, defined by best-fit Output Areas

### Age Profile (Census 2011)



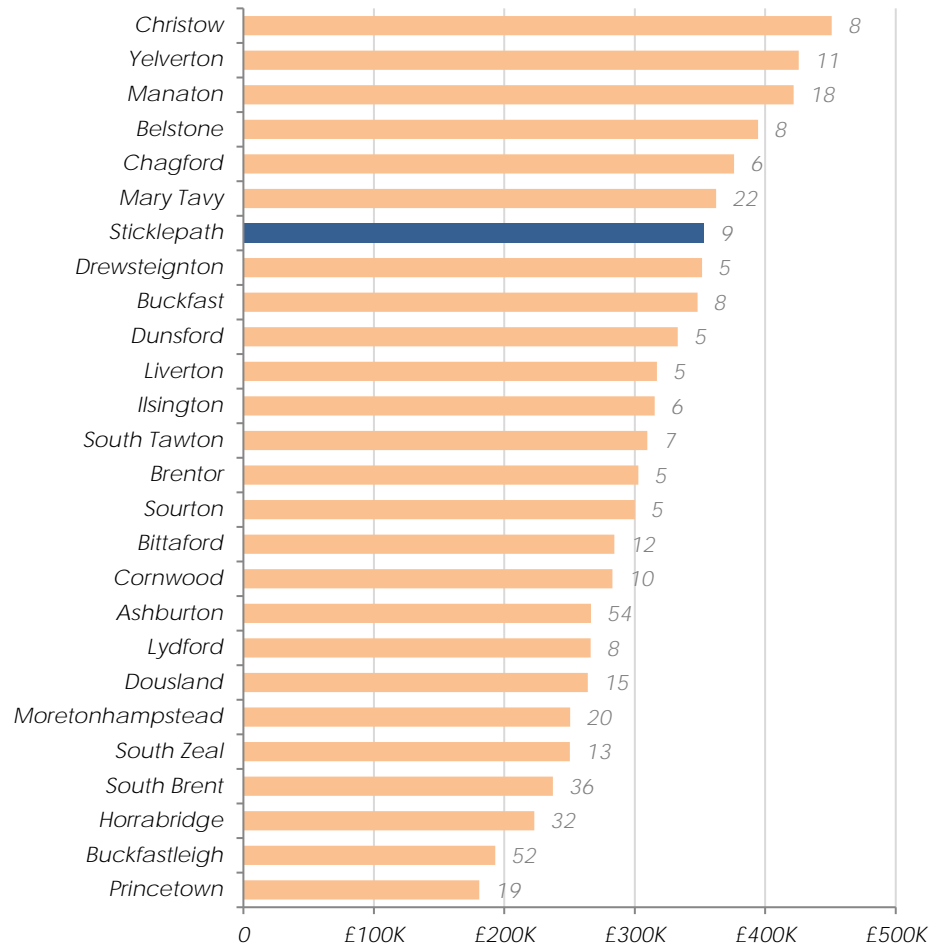
### Settlement comparison (Census 2011)



\* Includes prison population

## Average House Prices 2016

Excluding settlements with less than five sales, number of sales labelled



Land Registry, 2016

## Identifying Housing Need

Sticklepath's affordable housing need will be identified from housing need within the following Parishes:

Sticklepath, Belstone, South Tawton

*Sites allocated for development in current local plan:*

*No sites allocated for development*

*4 affordable units have been delivered since 2008*

*No recent housing survey to identify local need for housing*

## **Issues Paper Consultation (Dec 2016)**

*The following summarises issues identified by the Parish Council:*

- *Existing settlement strategy allows an appropriate amount of development in Sticklepath*
- *Prioritise affordable rented and shared ownership housing*
- *New housing should be for principal residence only*
- *Ensure a wide range of people are supported to live in their community, including gypsies and travelers, low impact development, elderly downsizers and those needing care*
- *Protection of wildlife and biodiversity should not extend beyond national requirements*
- *Support growth of local businesses*
- *Ensure planning restrictions on farming development is proportionate and recognises the marginal nature of these businesses*
- *Encourage new uses for redundant historic agricultural buildings*

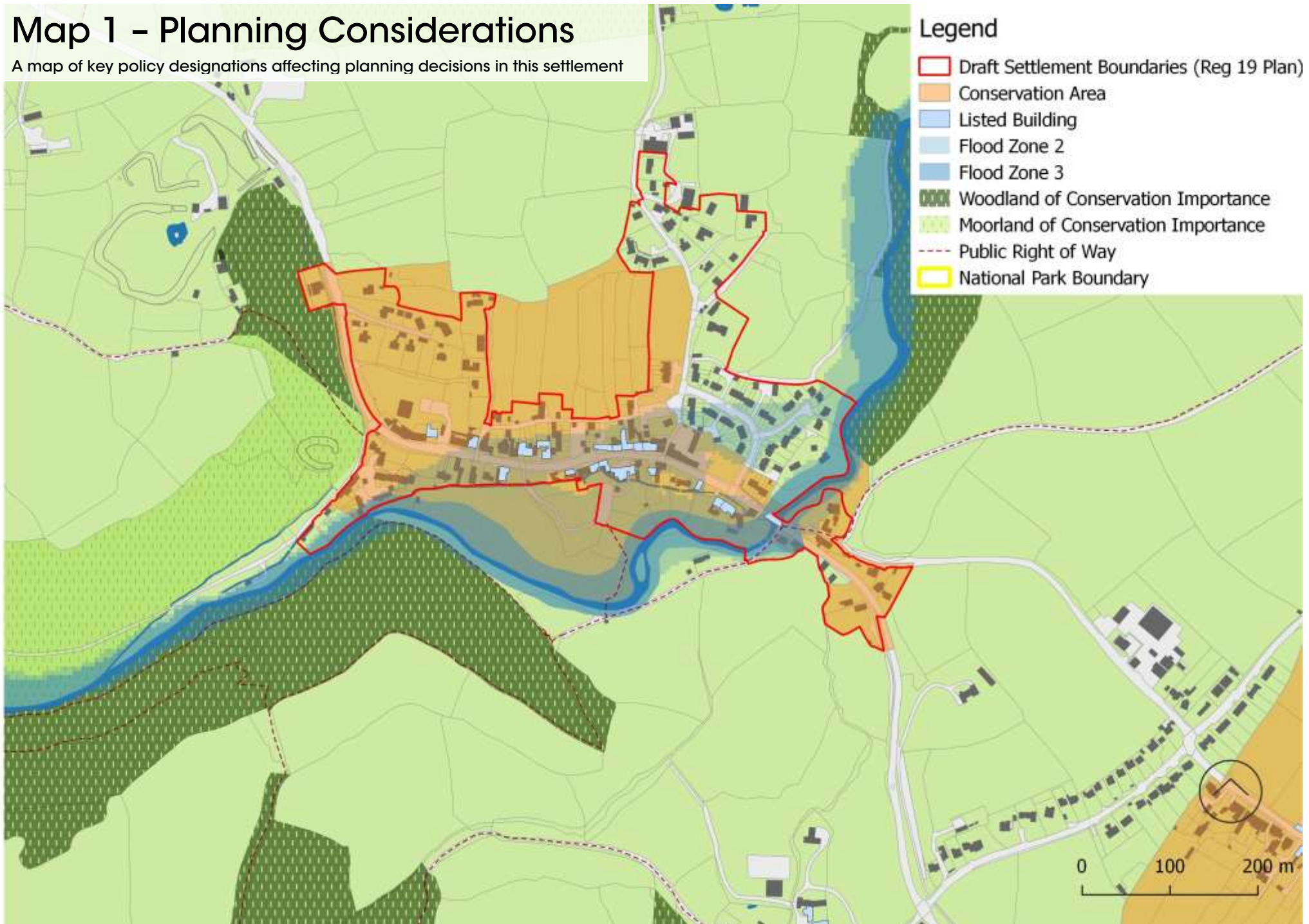
## **Infrastructure delivery**

*We are aware of the following items of infrastructure which are needed and have a reasonable prospect of being funded in the next 20 years:*

- *Desire for additional car parking (detailed assessment required)*

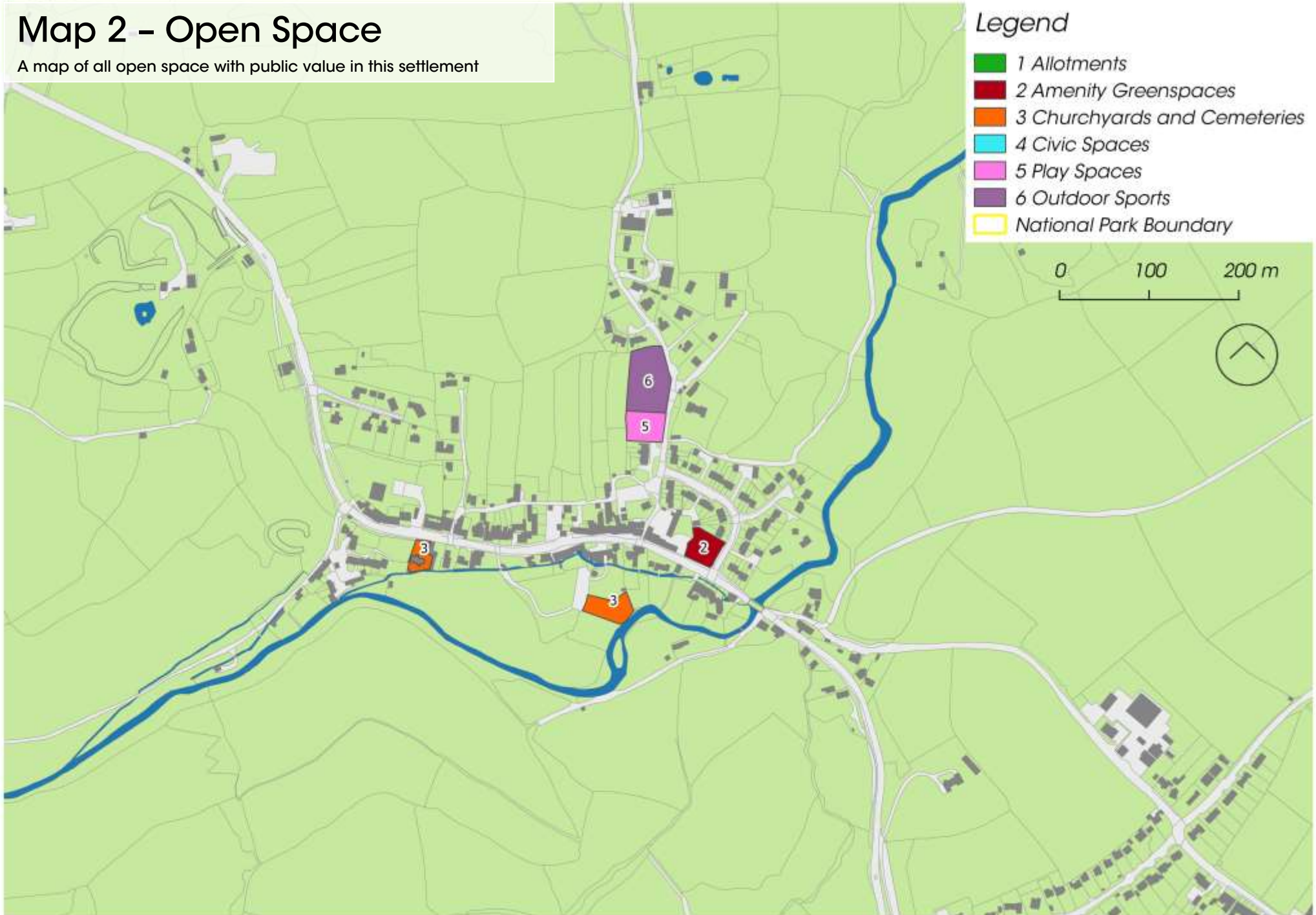
# Map 1 – Planning Considerations

A map of key policy designations affecting planning decisions in this settlement



# Map 2 - Open Space

A map of all open space with public value in this settlement



# Settlement Services and Connectivity

Information on this settlement's services and how well connected it is

## Settlement Services

Settlement	Post Office	Village Store	Village Hall	Primary School	Regular Bus Service	Recreation Ground	<b>Children's Play Area</b>	Church	Pub	Health Centre	Branch Surgery	Pharmacy	Garage (fuel)	A-Road	B-Road	U-Road
Sticklepath	x	✓	✓	x	✓	✓	✓	✓	✓	x	x	x	x	x	✓	✓
	If no, distance to nearest 1-2.5km		2.6-5km													

## Method of Travelling to work (Census 2011)

