



## DARTMOOR LOCAL PLAN

guiding planning applications in Dartmoor National Park

### Settlement Profile:

### *North Bovey*

**September 2019**

This settlement profile has been prepared by Dartmoor National Park Authority to provide an overview of key information and issues for the settlement. It has been prepared in consultation with Parish/Town Councils and will be updated as necessary.



# Introduction

*North Bovey is a village lying on a hillside above the River Bovey, 2 miles south-west of Moretonhampstead. It has what might, at first sight, appear to be a traditional village form - thatched cottages, pub and church set around a village green. However, within Dartmoor this is not common.*

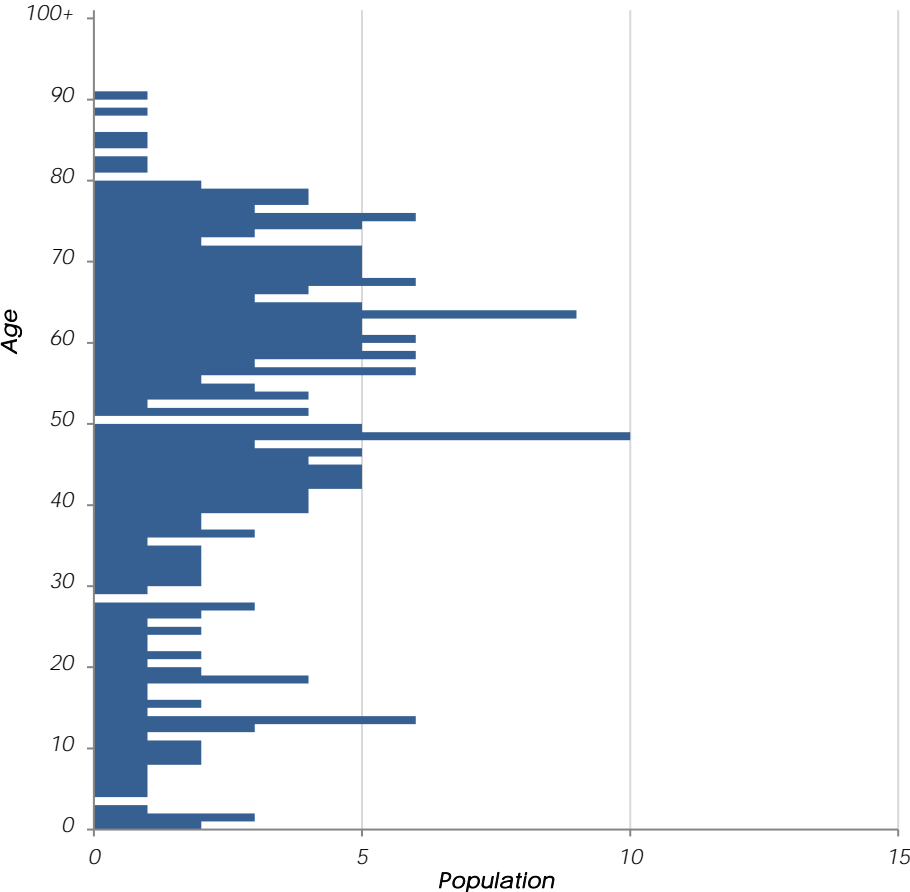
*Historically, its economy developed around farming and tin mining. The redevelopment of the nearby Manor House Hotel as Bovey Castle has led to an invigoration of the local tourism and hospitality trade*



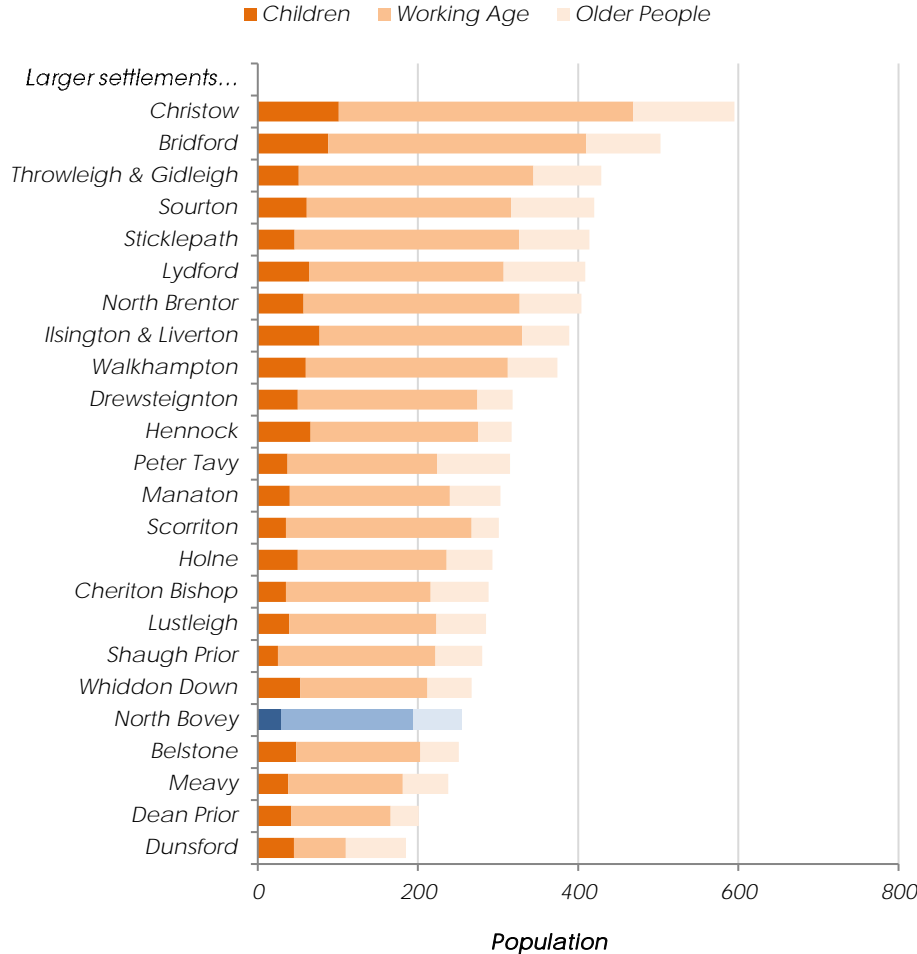
## Population 255

Census 2011, determined by best-fit Output Areas

### Age Profile (Census 2011)

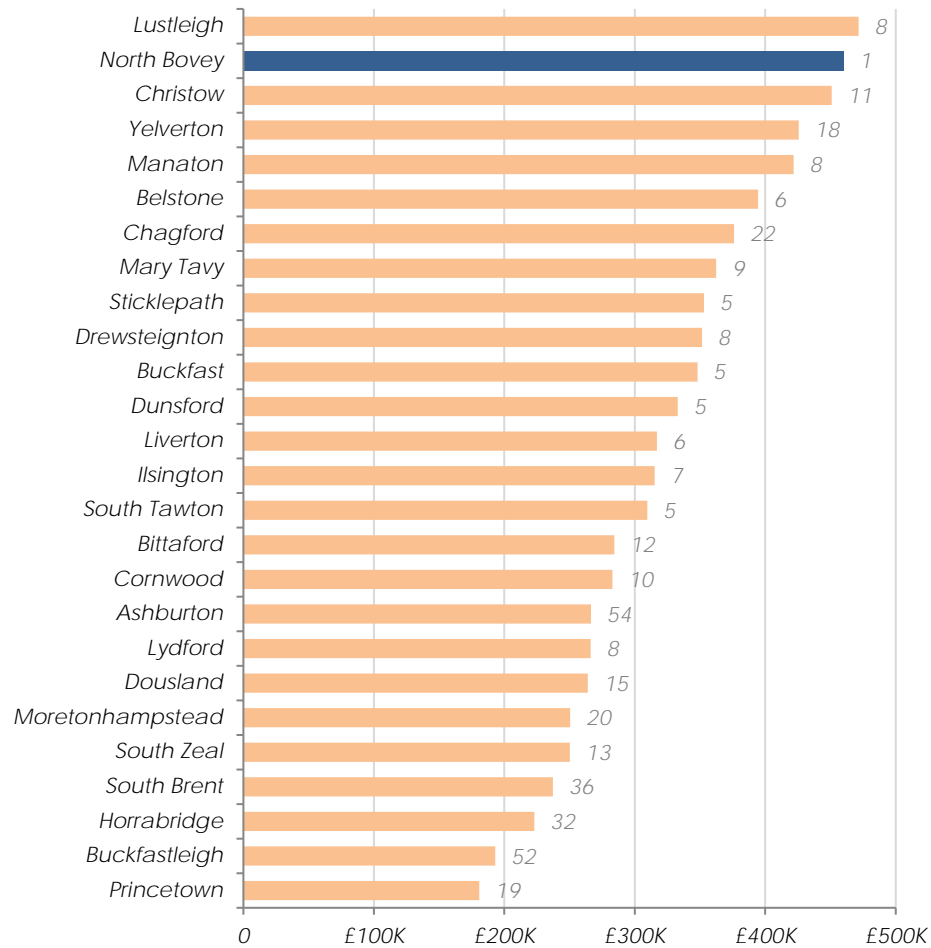


### Settlement comparison (Census 2011)



## Average House Prices 2016

Excluding all settlements, other than North Bovey, with less than five sales, number of sales labelled  
The low sales experienced in North Bovey do not provide an accurate average, but are an indication of poor housing availability in this area



Land Registry, 2016

## Identifying Housing Need

North Bovey's affordable housing need will be identified from housing need within the following Parishes:

North Bovey

*Sites allocated for development in current local plan:*

*No sites allocated for development*

*No affordable units have been delivered on other sites since 2008*

*No recent housing survey to identify local need for housing*

## **Issues Paper Consultation (Dec 2016)**

*No comments received from the Parish Council. No other comments received (comments may have been submitted without respondent's address details)*

## **Open Space, Sport and Recreation**

*We are aware of the following priorities for improving Open Space, Sport and Recreation facilities:*

- *None known*

## **Infrastructure delivery**

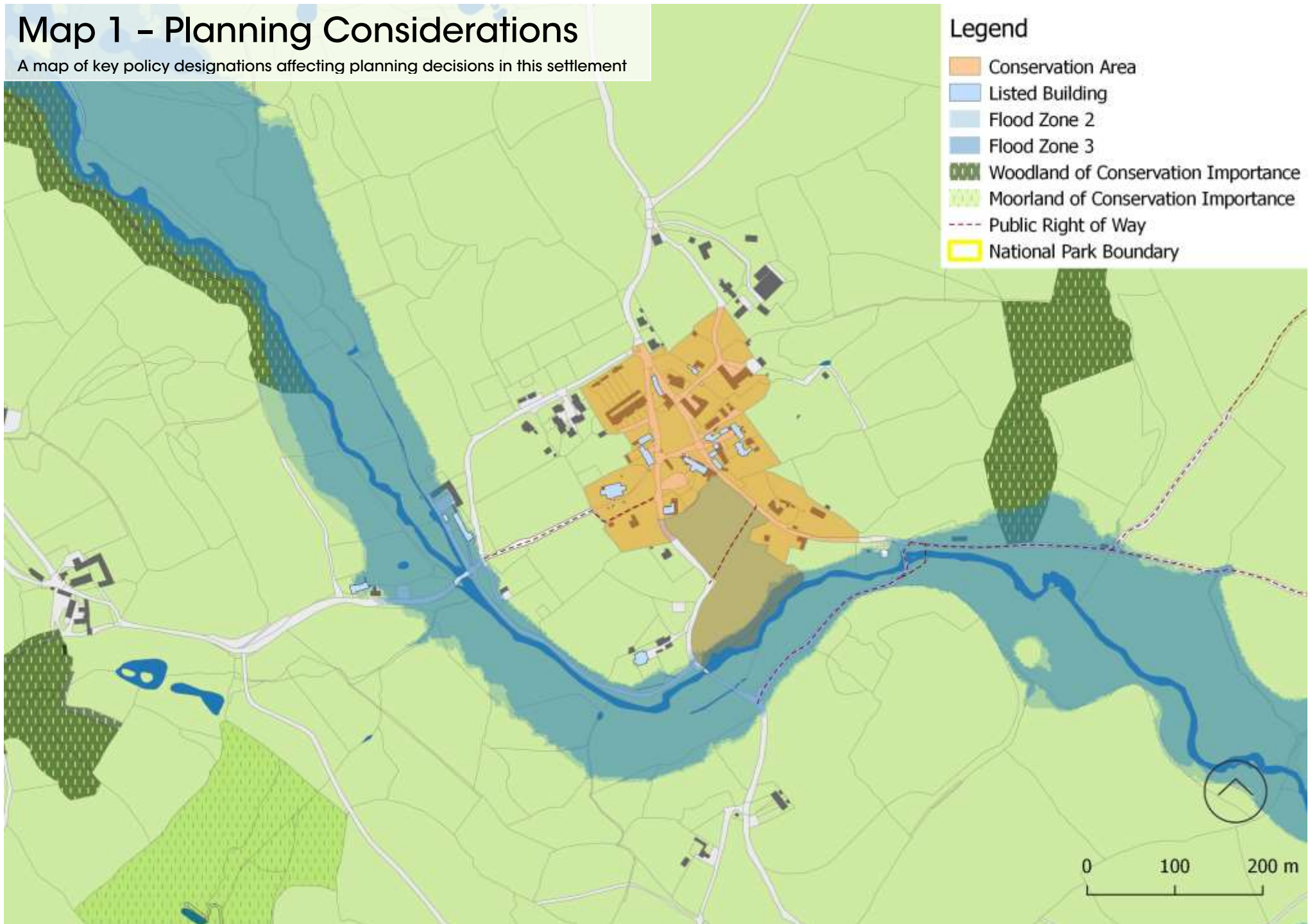
*We are aware of the following items of infrastructure which are needed and have a reasonable prospect of being funded in the next 20 years:*

- *None known*



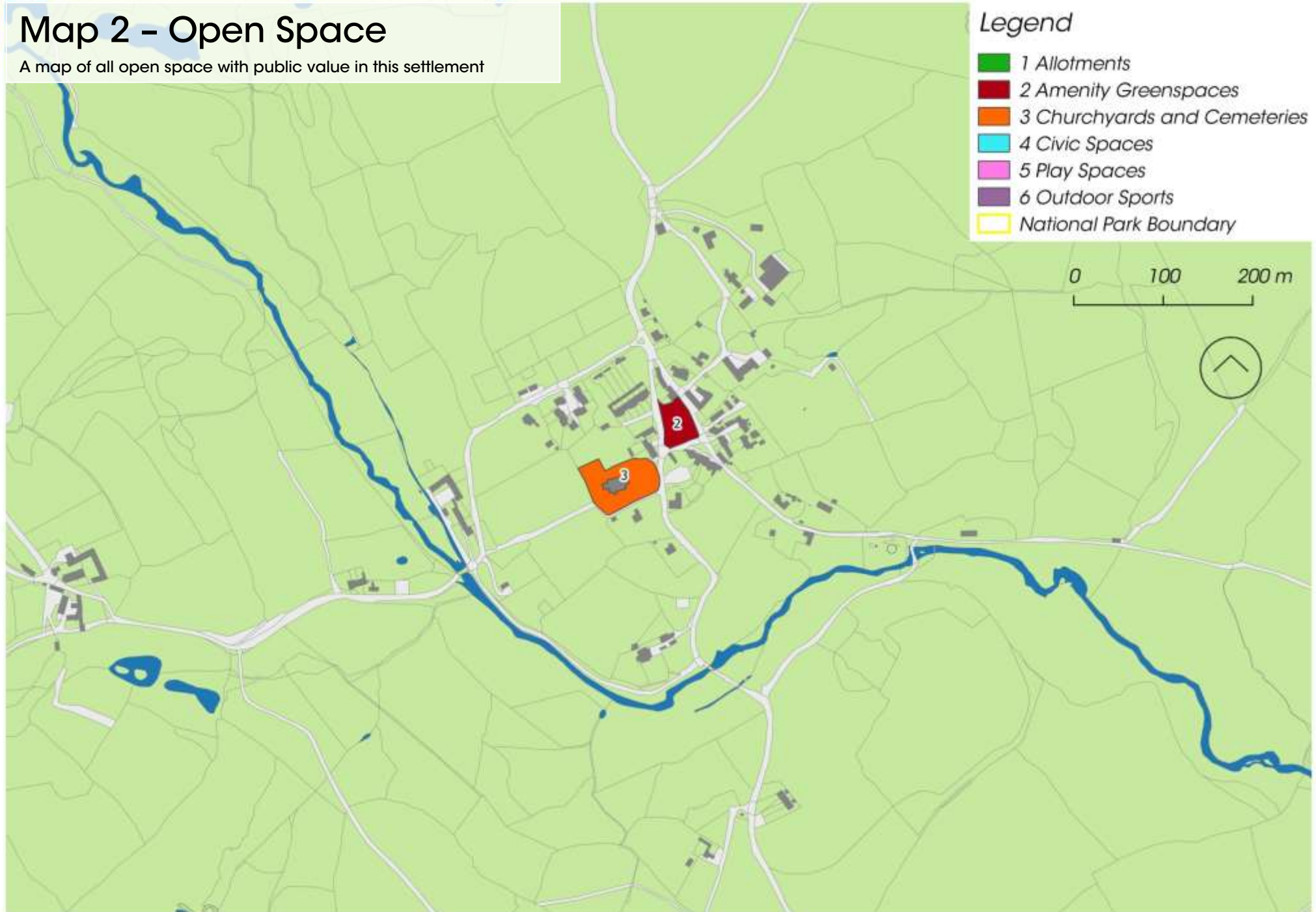
# Map 1 – Planning Considerations

A map of key policy designations affecting planning decisions in this settlement



# Map 2 - Open Space

A map of all open space with public value in this settlement



# Settlement Services and Connectivity

Information on this settlement's services and how well connected it is

## Settlement Services

Settlement	Post Office	Village Store	Village Hall	Primary School	Regular Bus Service	Recreation Ground	<b>Children's Play Area</b>	Church	Pub	Health Centre	Branch Surgery	Pharmacy	Garage (fuel)	A-Road	B-Road	U-Road
North Bovey	x	x	✓	x	x	x	x	✓	✓	x	x	x	x	x	x	✓
	<i>If no, distance to nearest</i>	2.6-5km	2.6-5km													

## Method of Travelling to work *(Census 2011)*

