



DARTMOOR LOCAL PLAN
guiding planning applications in Dartmoor National Park

Settlement Profile:

Throwleigh

September 2019

This settlement profile has been prepared by Dartmoor National Park Authority to provide an overview of key information and issues for the settlement. It has been prepared in consultation with Parish/Town Councils and will be updated as necessary.



Introduction

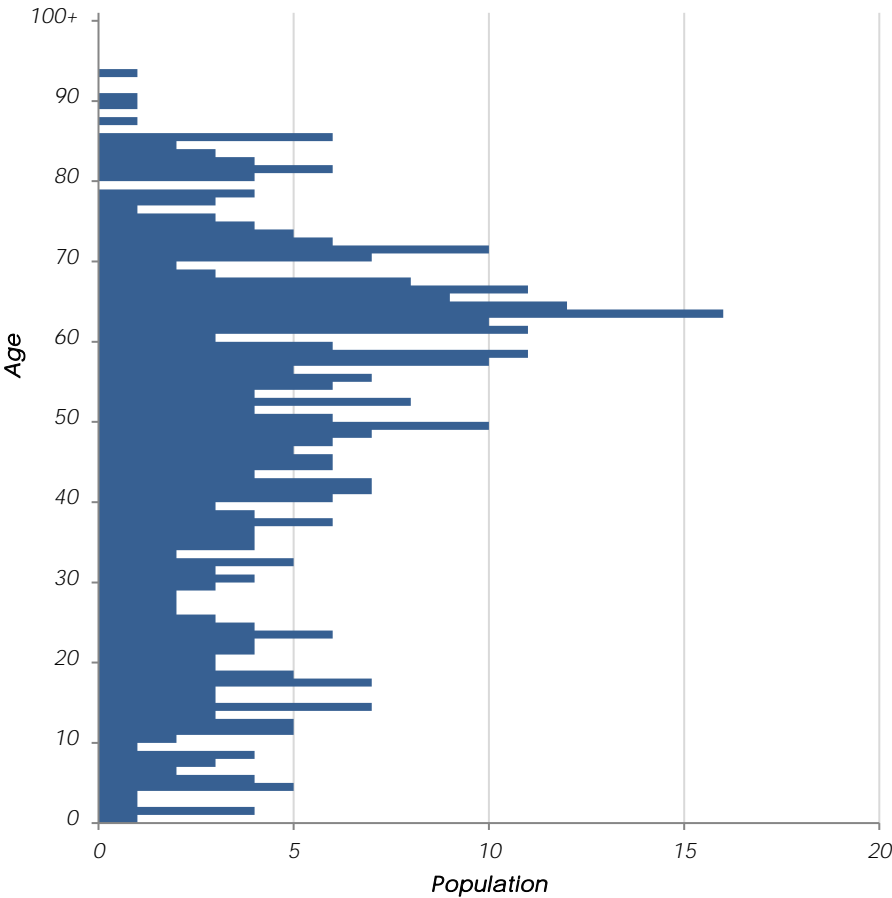
Throwleigh is a small village in northeast Dartmoor centred on the square, with the village cross and pond, and the church. There are few facilities in the village, but a shop-cum-post office serves the daily needs of local residents. From the closing years of the 19th century and during the 20th century, the settlement has seen considerable expansion. Infilling has taken place within the village centre, and many former farm buildings have been converted to dwellings.



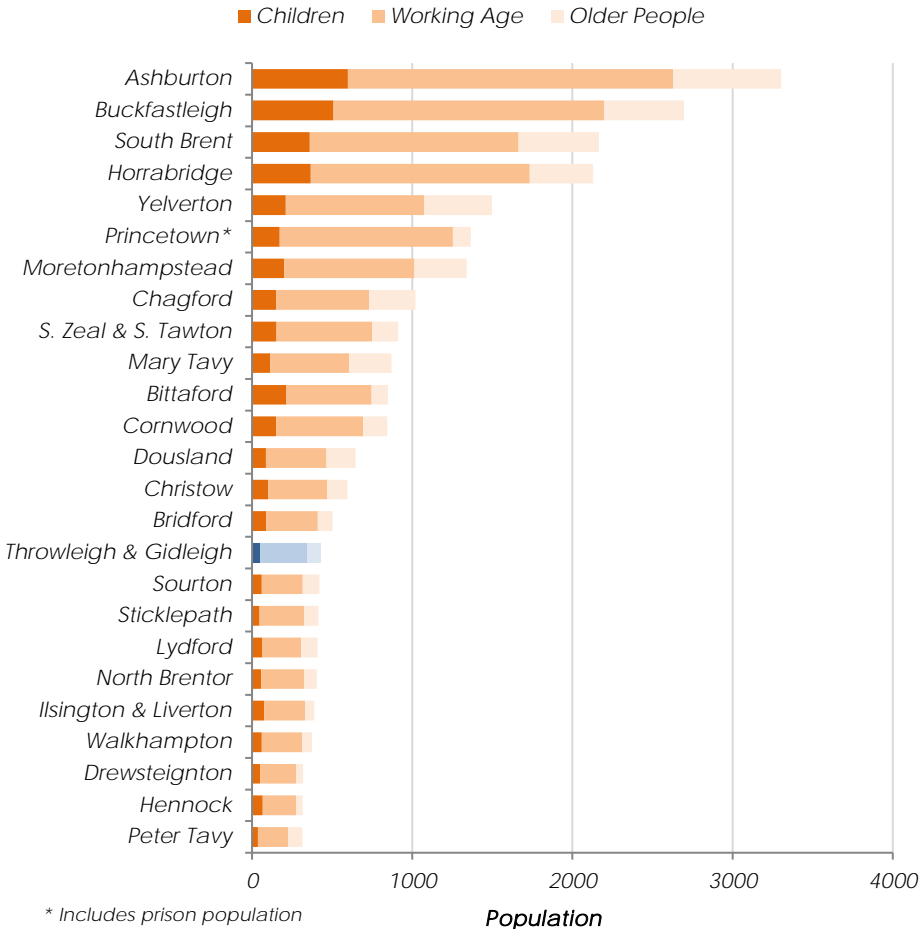
Population 429

Census 2011, Throwleigh and Gidleigh

Age Profile (Census 2011)

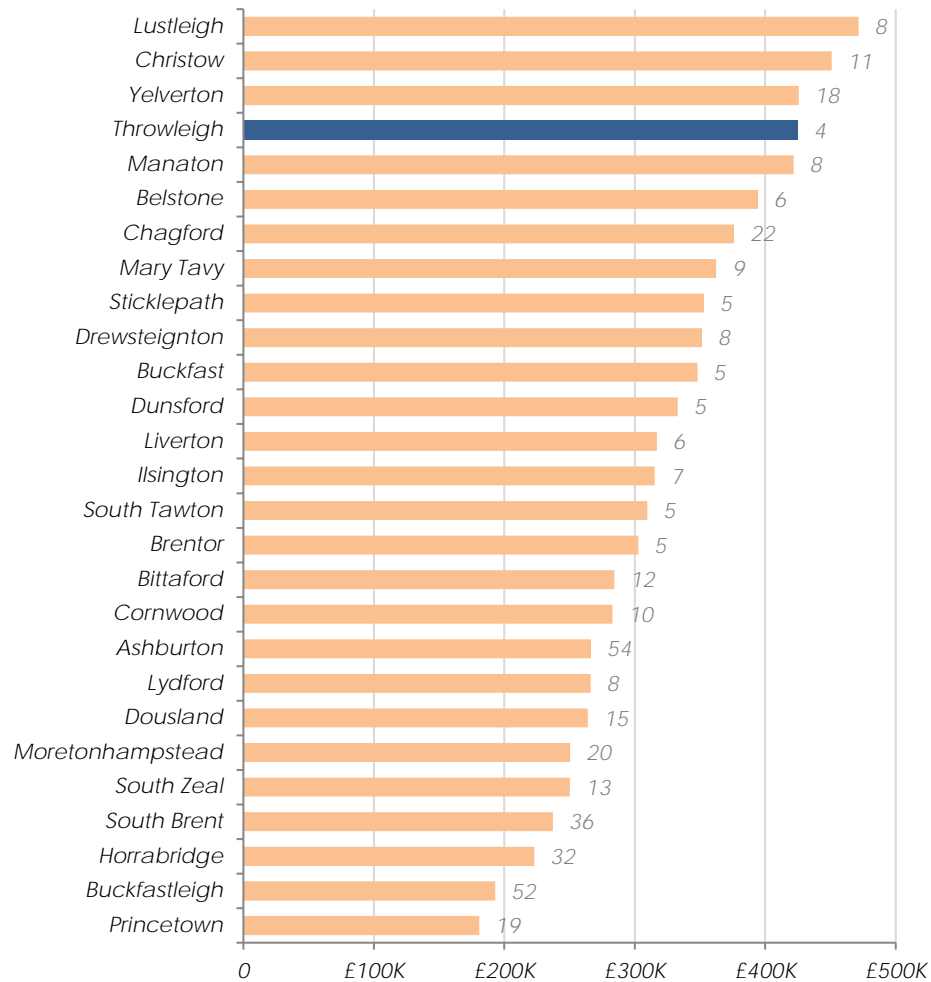


Settlement comparison (Census 2011)



Average House Prices 2016

Excluding settlements other than Throwleigh with less than five sales, number of sales labelled



Land Registry, 2016

Identifying Housing Need

Throwleigh's affordable housing need will be identified from housing need within the following Parishes:

Throwleigh

<p>Sites allocated for development in current local plan:</p>	<p><i>No sites allocated for development</i></p>
<p>August 2007 Housing Needs Assessment for Throwleigh Parish recommended:</p>	<p><i>No affordable units have been delivered on other sites since 2008</i></p>
<p>October 2010 Older Persons Housing Needs Assessment* recommended: *for Chagford, Drewsteignton, Throwleigh and Gidleigh Parishes</p>	<p><i>4 affordable units needed in next 3 years</i></p>
	<p><i>2 one-bed, 1 two-bed, and 1 four-bed</i></p>
	<p><i>3 rented and 1 shared ownership</i></p>
	<p><i>Insufficient need to justify development in Throwleigh, majority of need identified in Chagford</i></p>

Issues Paper Consultation (Dec 2016)

No comments received from the Parish Council. The following summarises issues identified by residents:

- Concern at poor availability of affordable dwellings
- Prioritise affordable housing, rented and shared ownership accommodation
- Prioritise brownfield development
- Concern at impact of second home ownership
- Encourage and support self-build
- Support community renewable energy projects
- Support sustainable development and encourage use of renewable materials

Infrastructure delivery

We are aware of the following items of infrastructure which are needed and have a reasonable prospect of being funded in the next 20 years:

- None known

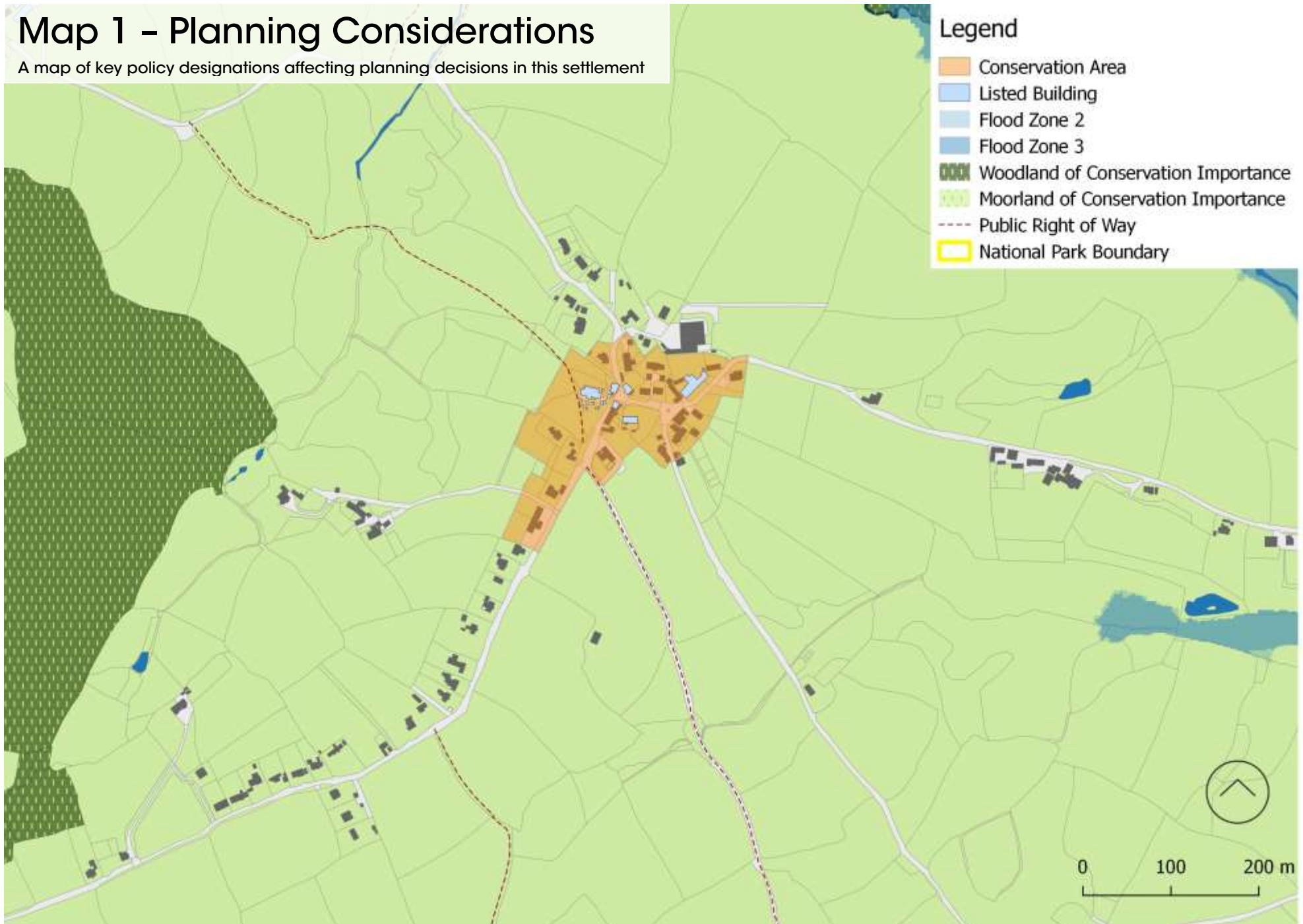
Open Space, Sport and Recreation

We are aware of the following priorities for improving Open Space, Sport and Recreation facilities:

- None known

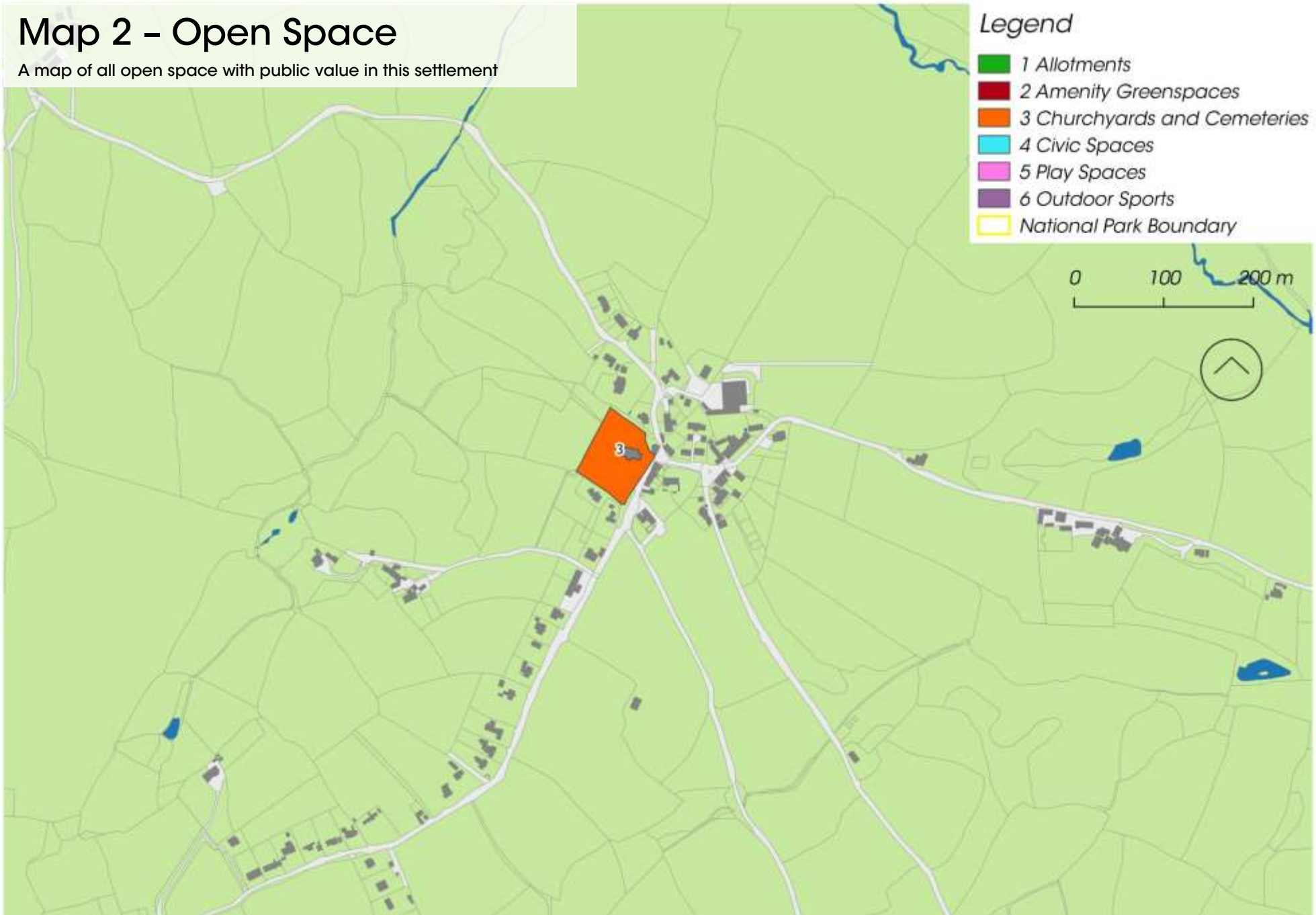
Map 1 – Planning Considerations

A map of key policy designations affecting planning decisions in this settlement



Map 2 - Open Space

A map of all open space with public value in this settlement



Settlement Services and Connectivity

Information on this settlement's services and how well connected it is

Settlement Services

Settlement	Post Office	Village Store	Village Hall	Primary School	Regular Bus Service	Recreation Ground	Children's Play Area	Church	Pub	Health Centre	Branch Surgery	Pharmacy	Garage (fuel)	A-Road	B-Road	U-Road
Throwleigh	✓	x	x	x	x	x	x	✓	x	x	x	x	x	x	x	✓
<i>If no, distance to nearest</i>		2.6-5km	1-2.5km	2.6-5km												

Method of Travelling to work (Census 2011, Throwleigh and Gidleigh)

