



DARTMOOR LOCAL PLAN

guiding planning applications in Dartmoor National Park

Settlement Profile: *Horrabridge*

October 2017

This settlement profile has been prepared by Dartmoor National Park Authority to support the review of the Dartmoor National Park Local Plan. Parish/Town Councils were consulted on a draft in June-September 2017 and asked to identify any amendments or inaccuracies. The revised profile provides an overview of key information and issues for the settlement. It will be updated as necessary to inform the Local Plan review.

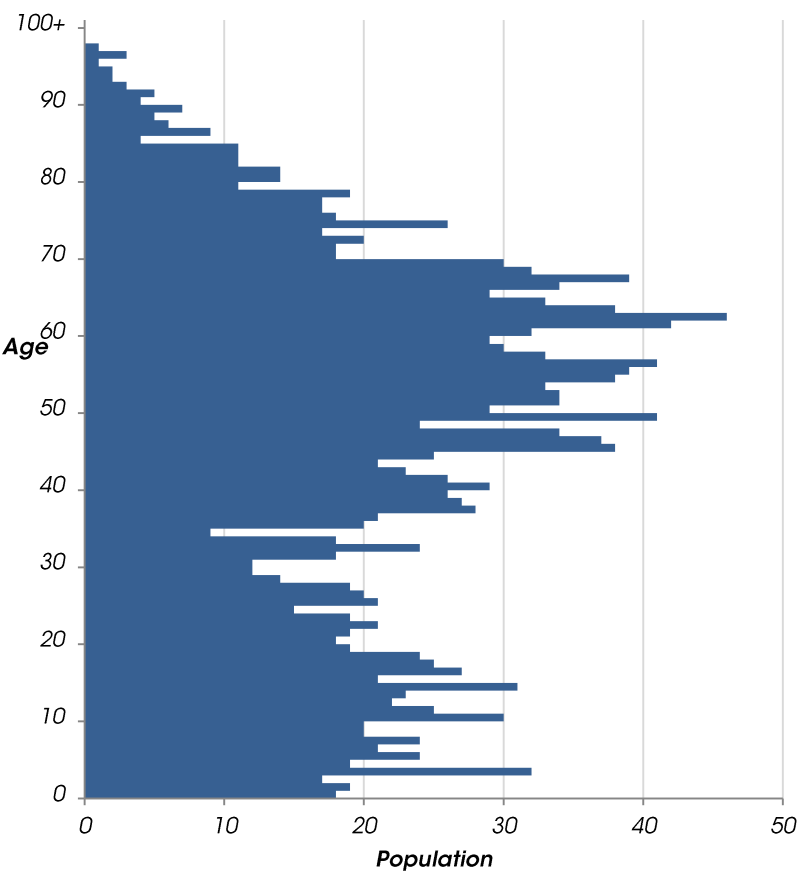


Population

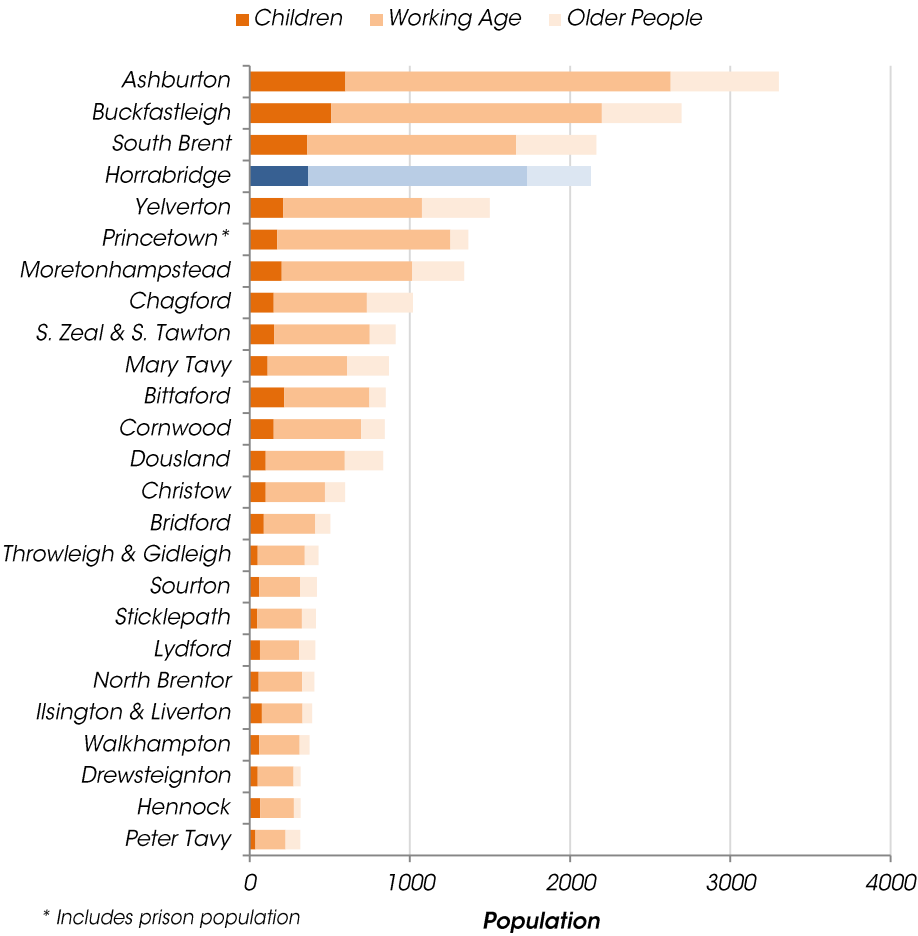
2,129

Census 2011, defined by best-fit Output Areas

Age Profile *(Census 2011)*

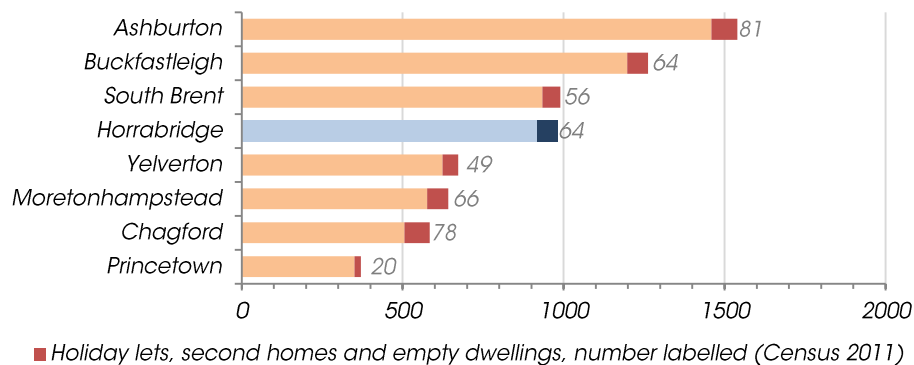


Settlement comparison *(Census 2011)*



Current Housing Stock

Census 2011, defined by best-fit Output Areas



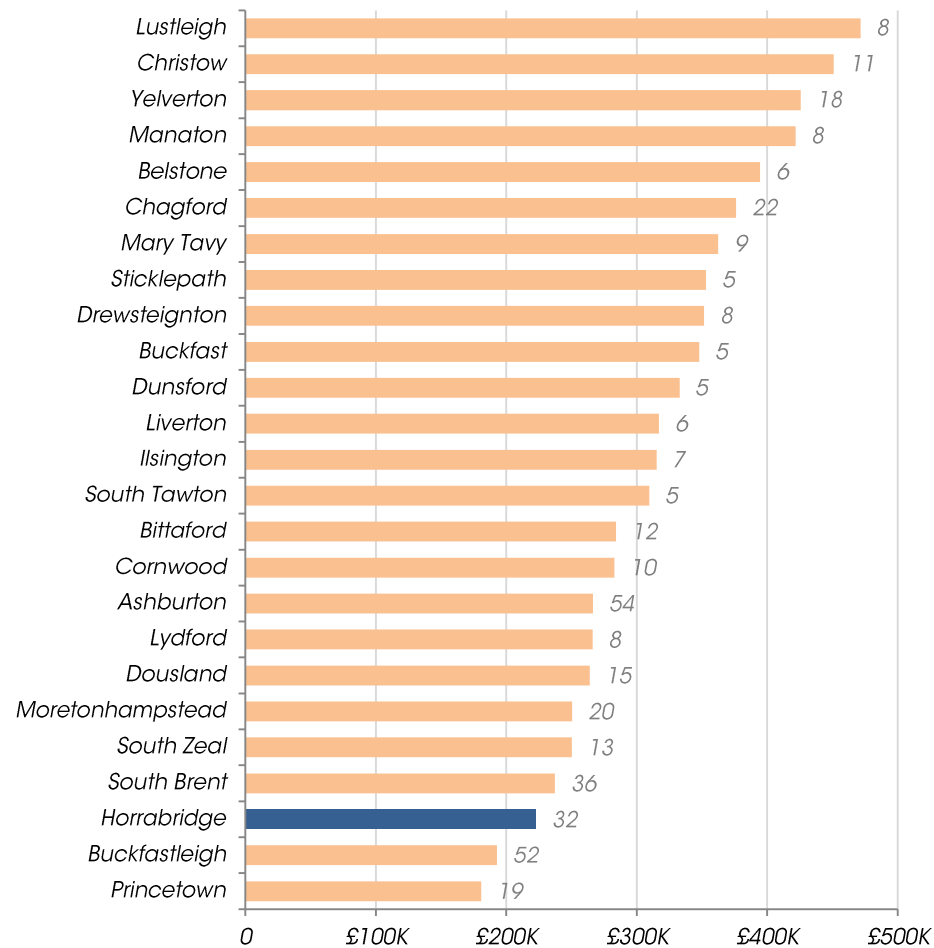
Current Affordable Housing Stock

Bedrooms					
1	2	3	4	5+	Total
50	59	57	0	2	168

Devon Communities Together, 2016

Average House Prices 2016

Excluding settlements with less than five sales, number of sales labelled



Land Registry, 2016

Sites allocated for development in current local plan:

2 sites allocated for housing

Total land area of 1.76 Ha

Planning permission granted on Walkham Meadow site (HOR1) for 10 affordable houses

22 residential units have been delivered on other sites since 2008

The August 2012 Housing Needs Assessment recommended:

9 affordable homes needed within 5 years

4 one-bed, 4 three-bed and 1 four-bed

6 rented and 3 shared ownership properties

Issues Paper Consultation (Dec 2016)

The following summarises issues identified by Horrabridge's residents:

- *Encourage public access to river banks*
- *Encourage light quarrying of stone in appropriate locations*

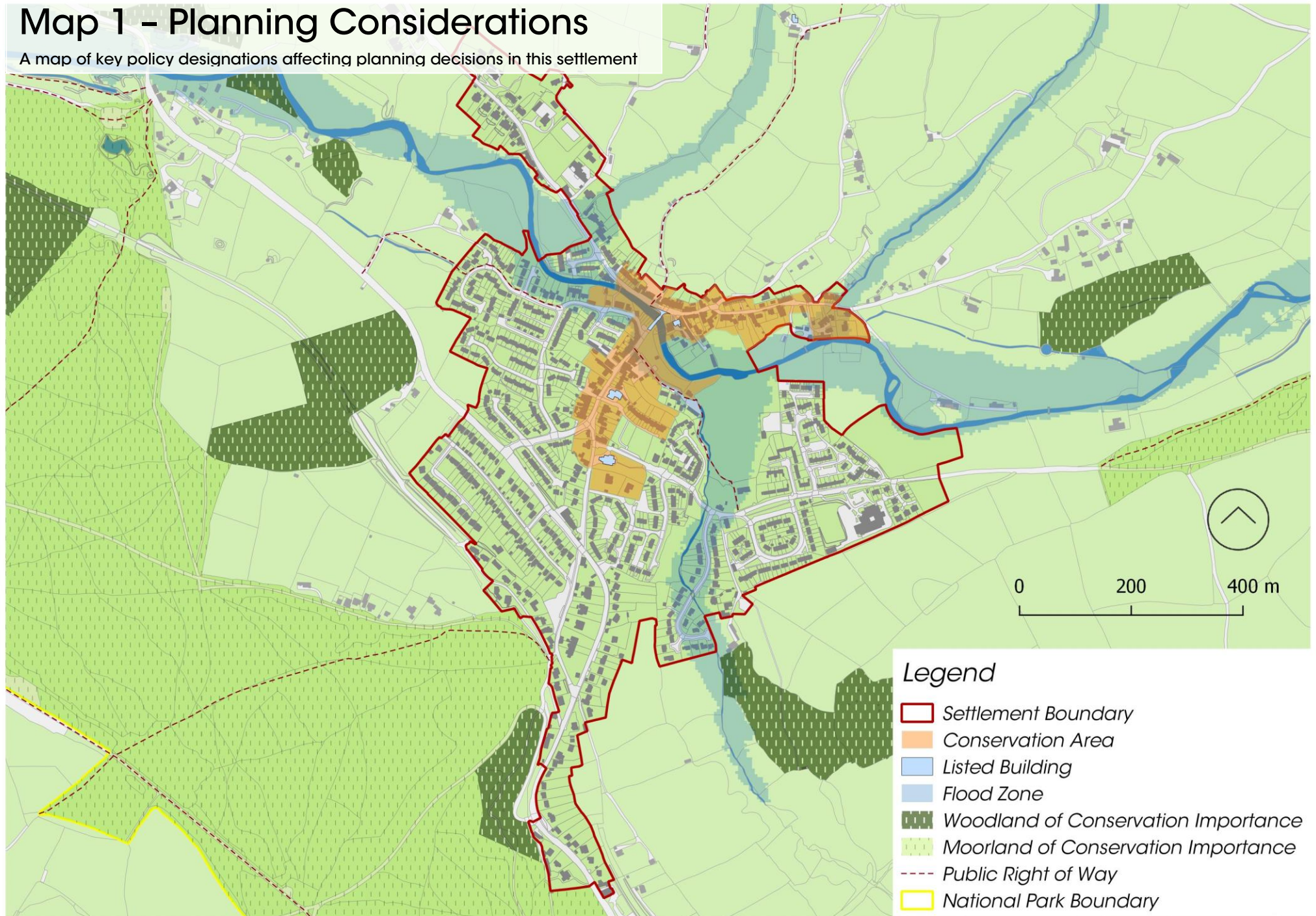
Infrastructure delivery

We are aware of the following items of infrastructure which are needed and have a reasonable prospect of being funded in the next 20 years:

- *Additional car parking requirements (detailed assessment needed)*
- *Recreational open space to be provided as part of development at New Park (HOR2)*

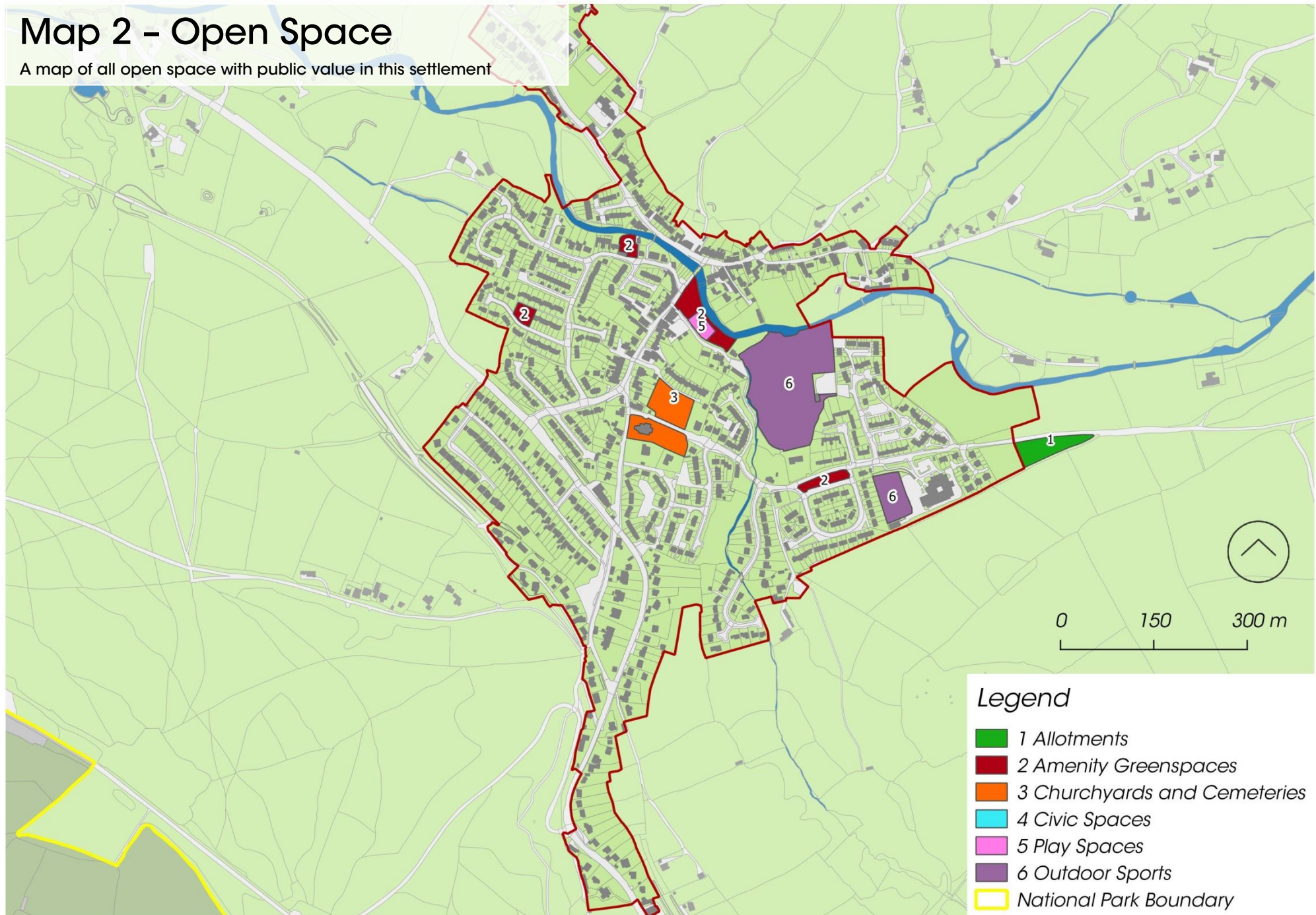
Map 1 – Planning Considerations

A map of key policy designations affecting planning decisions in this settlement



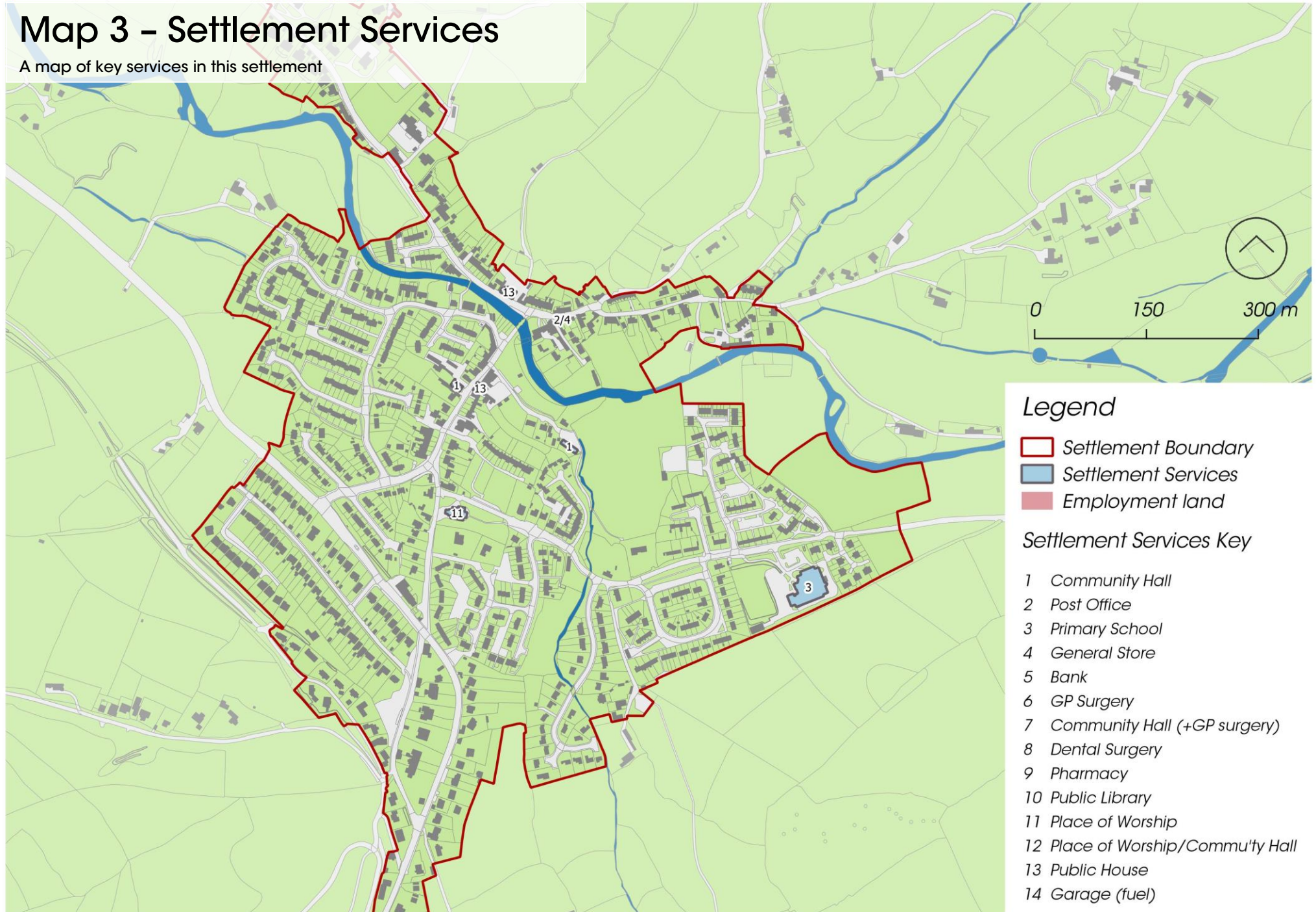
Map 2 - Open Space

A map of all open space with public value in this settlement



Map 3 – Settlement Services

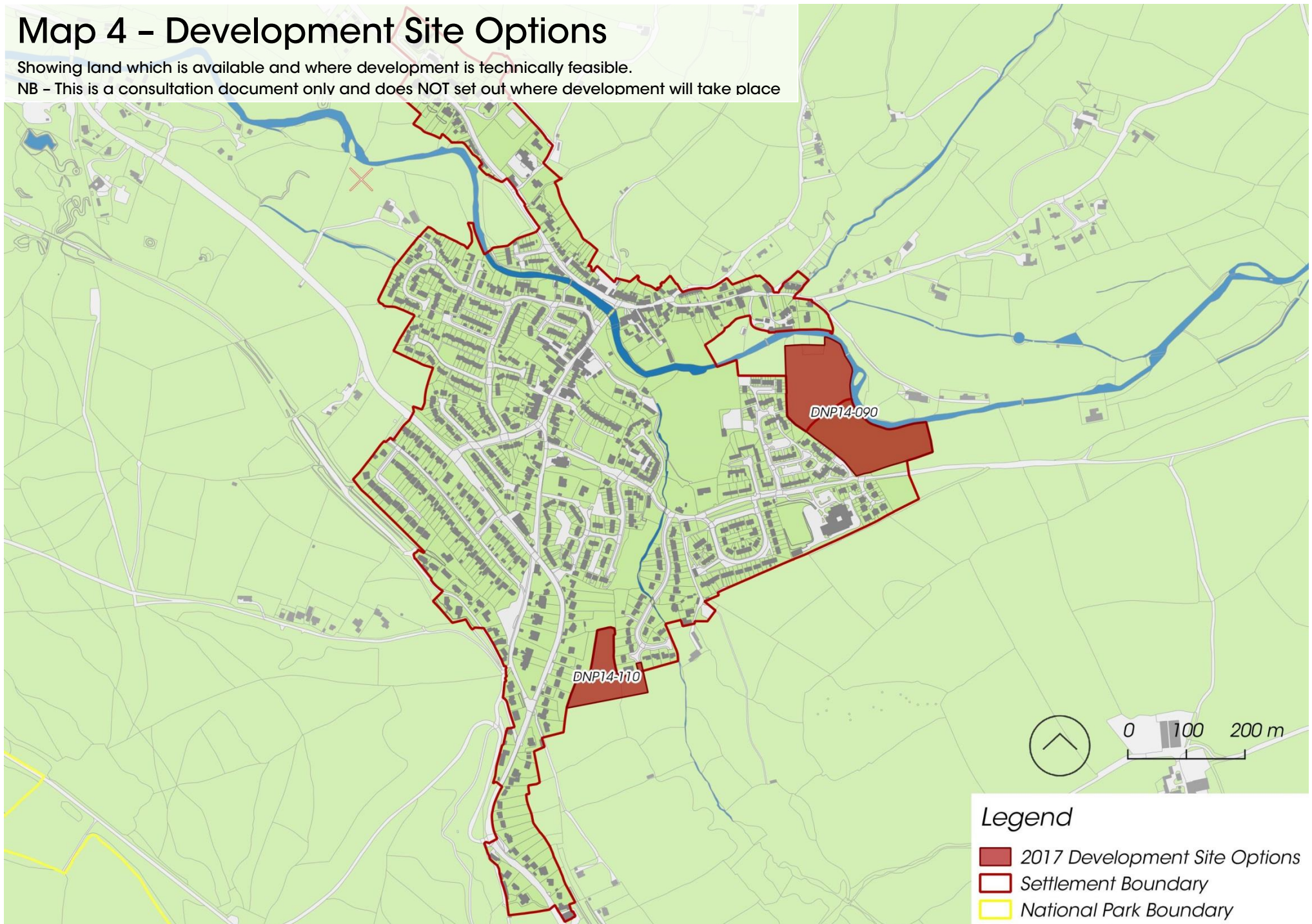
A map of key services in this settlement



Map 4 – Development Site Options

Showing land which is available and where development is technically feasible.

NB – This is a consultation document only and does NOT set out where development will take place



Outgoing Bus Services

No.	Route	Days	Times ¹	Frequency ¹
1	Horrabridge – Tavistock	Mon-Sat	0641-2342	1 / 30 mins
		Sun	0942-2142	1 / hour
	Horrabridge– Plymouth Via Derriford	Mon-Sat	0658-2212	1 / 30 mins
		Sun	0913-2012	1 / hour
45	Horrabridge – Tavistock	Mon-Sat	0517-1622	1 / 2 hours
	Horrabridge – Plymouth Via Woolwell	Mon-Sat	0731-1951	1 / 3 hours
55	Horrabridge– Crapstone Via Milton Combe	Mon-Sat	1308	1
X1	Horrabridge - Tavistock	Mon-Sat	0723-1919	1 / 30 mins
	Horrabridge– Plymouth Via Woolwell	Mon-Sat	0608-1832	1 / 30 mins

¹ Indicative only, times should not be relied upon and will be subject to change

Method of Travelling to work (Census 2011)

