



DARTMOOR LOCAL PLAN
guiding planning applications in Dartmoor National Park

Settlement Profile:

Peter Tavy

September 2019

This settlement profile has been prepared by Dartmoor National Park Authority to provide an overview of key information and issues for the settlement. It has been prepared in consultation with Parish/Town Councils and will be updated as necessary.



Introduction

Lying on the western borders of Dartmoor, 3 miles northeast of Tavistock, Peter Tavy is a village with a clear nucleus but which spreads to the south and east. The village has a history of mining, and retains a strong agricultural character. The mills that exploited the power of the Colly Brook that passes through the centre of the settlement are important features. The Methodist Chapel and school were important additions to the village in the 19th century and 20th century building is scattered around the village, particularly in the south.

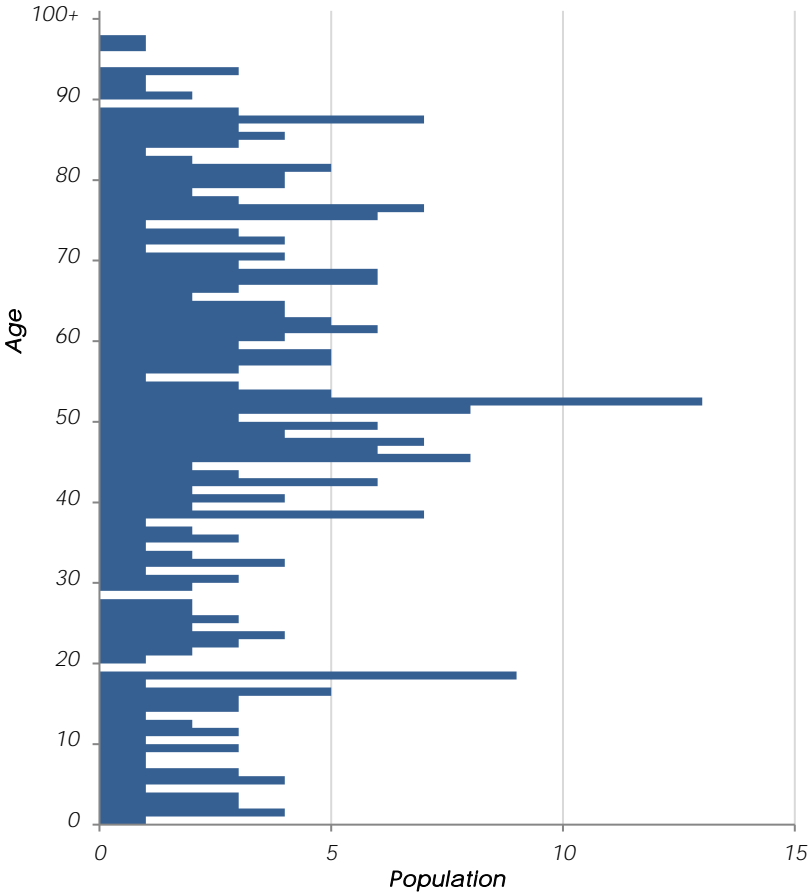
The village progressively lost its range of services and facilities over the years. There is, however, an attractive inn, a church founded in Norman times, and a village hall. It is notable that the village has retained a working farm at its centre.



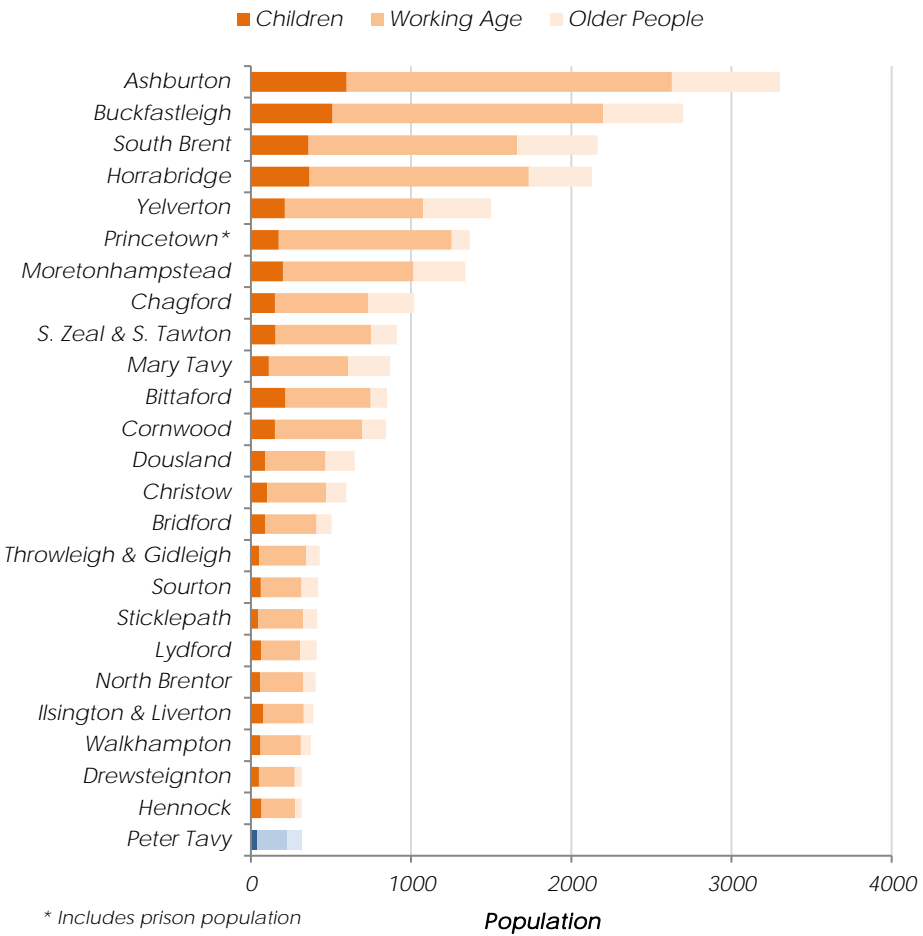
Population 315

Census 2011, determined by best-fit Output Areas

Age Profile (Census 2011)

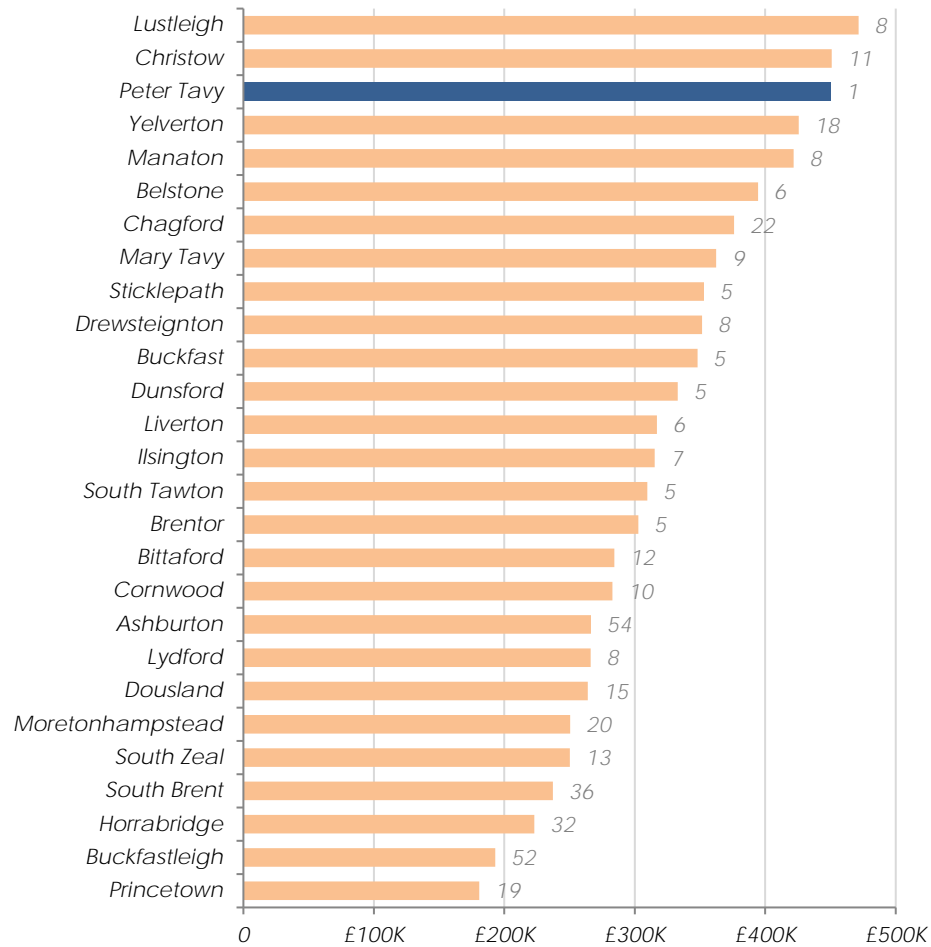


Settlement comparison (Census 2011)



Average House Prices 2016

Excluding settlements other than Peter Tavy with less than five sales, number of sales labelled
The low sales experienced in Peter Tavy do not provide an accurate average, but are an indication of poor housing availability in this area



Land Registry, 2016

Identifying Housing Need

Peter Tavy's affordable housing need will be identified from housing need within the following Parishes:

Peter Tavy

Sites allocated for development in current local plan:

No sites allocated for development

No affordable units have been delivered on other sites since 2008

No recent housing survey to identify local need for housing

Issues Paper Consultation (Dec 2016)

The following summarises issues identified by the Parish Council:

- *Prioritise affordable housing to help retain younger population and wider community*
- *Concern that second home ownership is harming local economy*
- *Encourage improved availability of public transport*
- *Concern that increased tourism and large-scale recreational events are having a harmful impact on the National Park*
- *New development should be in-keeping with and sympathetic to the surrounding area*

Infrastructure delivery

We are aware of the following items of infrastructure which are needed and have a reasonable prospect of being funded in the next 20 years:

- *None known*

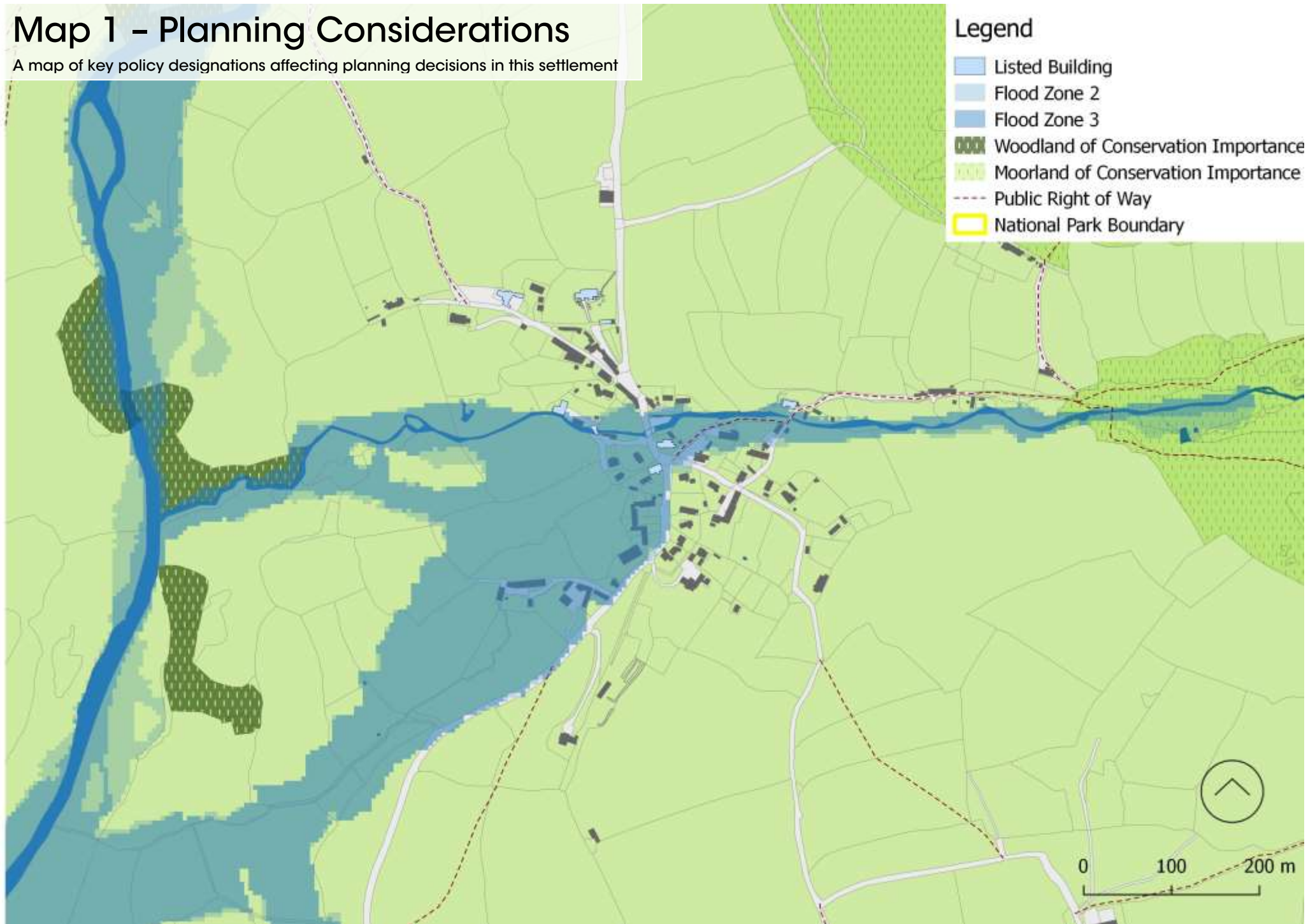
Open Space, Sport and Recreation

We are aware of the following priorities for improving Open Space, Sport and Recreation facilities:

- *None known*

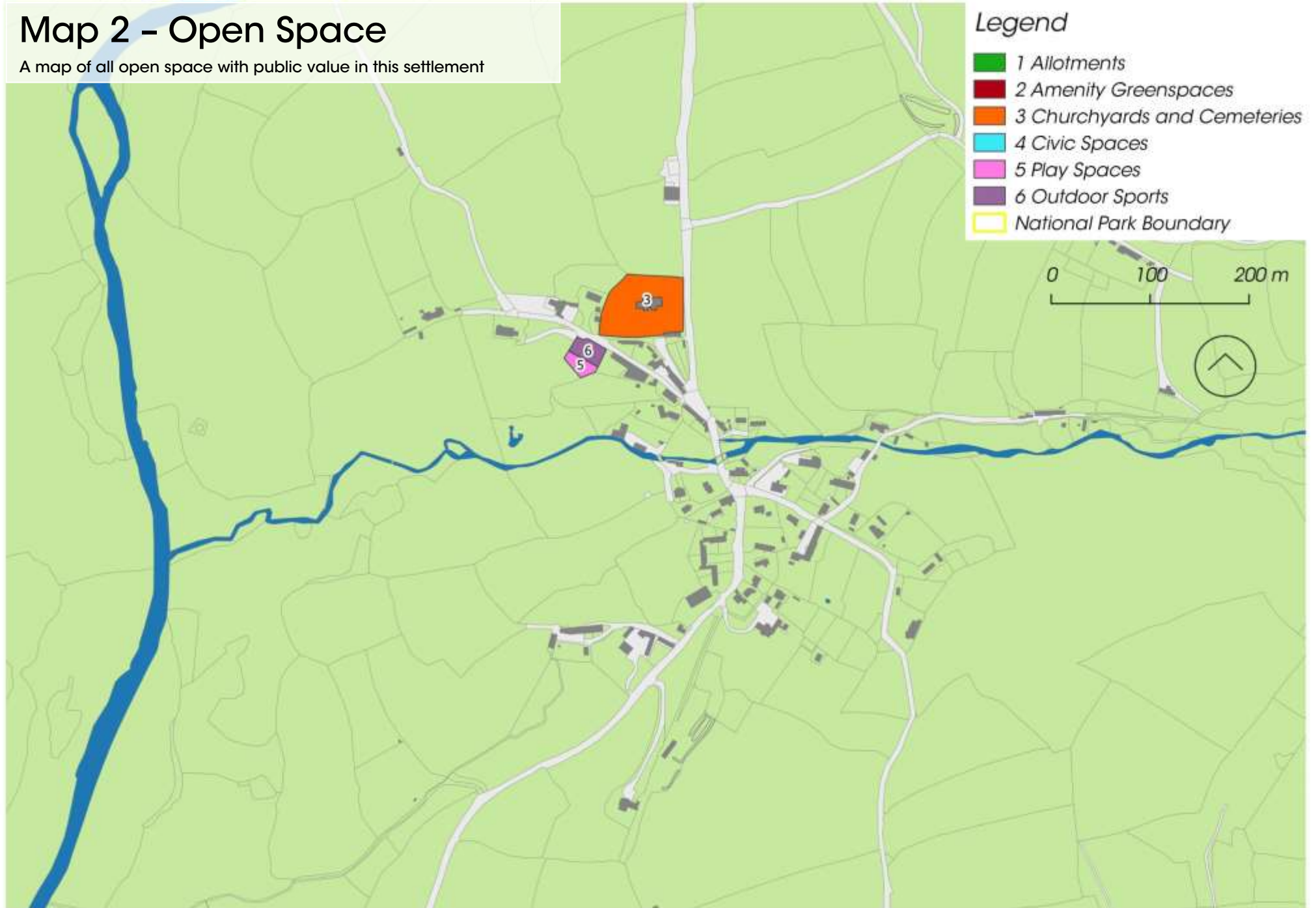
Map 1 – Planning Considerations

A map of key policy designations affecting planning decisions in this settlement



Map 2 - Open Space

A map of all open space with public value in this settlement



Settlement Services and Connectivity

Information on this settlement's services and how well connected it is

Settlement Services

| Settlement | Post Office | Village Store | Village Hall | Primary School | Regular Bus Service | Recreation Ground | Children's Play Area | Church | Pub | Health Centre | Branch Surgery | Pharmacy | Garage (fuel) | A-Road | B-Road | U-Road |
|----------------------------|-------------|---------------|--------------|----------------|---------------------|-------------------|----------------------|--------|-----|---------------|----------------|----------|---------------|--------|--------|--------|
| Peter Tavy | x | x | ✓ | x | x | ✓ | ✓ | ✓ | ✓ | x | x | x | x | x | x | ✓ |
| If no, distance to nearest | 1-2.5km | 1-2.5km | | 2.6-5km | | | | | | | | | | | | |

Method of Travelling to work (Census 2011)

