



NEWSLETTER 79



RANGER RALPH'S CLUB



Ranger Ralph's Family Fun Events 2020

Sadly, we are still not able to organise or provide events for the Ranger Ralph Club as yet but we do hope that when we can you will all want to join us to re connect with the nature of Dartmoor. We have missed you all and we have missed celebrating not only Ranger Ralph's 20th birthday party but fun filled days at all our lovely summer shows.

Let's hope we can plan some new events for you soon but in the meantime have you seen the activities that you can do on my Funzone page? They are all very easy to do and do not need lots of tricky resources. If you haven't looked at my page already take a look now, I think you will enjoy them. From making twiggy spider webs to woodlouse race tracks and citrus birdfeeders to medieval toothpaste.

<https://www.dartmoor.gov.uk/enjoy-dartmoor/funzone/games>



Hello,

Well, what a very strange spring we have had, not being able to get outdoors as much as we would have liked. However, while our lives were suspended, nature was carrying on. It was business as usual ... bulbs still came up, leaves grew on the trees, spring flowers were abundant and it was a powerful reminder that while we may have stood still, the earth still turned.

I'm sure you will agree that as we spent more time indoors we began to appreciate the natural world so much more. We engaged with nature in our gardens and found delight at discovering insects, spiders, slugs and other creatures that often get ignored. I planted lavender, buddleia and rosemary in my garden to attract more bees and installed a bird bath for my feathered friends to stop and take a drink or enjoy a splash around during the hot weather.

Whilst exploring my local lanes I noticed old trees I hadn't seen before, unusual flowers in the hedgerow and remnants of history past that had gone unnoticed. There was less traffic on the roads so that we could actually hear nature's voice,

bird song seemed louder, the skies were clearer without aeroplane contrails, and the air quality seemed purer.

Ralph

What we have missed is being able to see you all in person and running our usual Ranger Ralph activities and fun filled days at our country shows.

Although we haven't seen you for a long time all the team here at Dartmoor have been busy creating activities to do at home and a 'virtual festival'. You can access the activities on our website and don't worry if you've missed any because you can watch them in your own time.

<https://www.dartmoor.gov.uk/enjoy-dartmoor/dartmoor-connections-festival>

Nature and particularly the nature on Dartmoor has so much to offer and hopefully we will all become better at looking after it.

I hope you enjoy this newsletter with some exciting news about our newly refurbished visitor centre at Postbridge, a tricky Prehistoric puzzle to solve and a pretend fun summer show programme to work out.

Let's hope we may have some autumn activities to offer you all but in the meantime, enjoy the rest of the summer and remember to follow the Ranger code,



RANGER RALPH SAYS:

"We look forward to welcoming you back to Dartmoor but if you are planning to visit a popular location; particularly riverside sites try and avoid the busiest times (normally between 1 and 3pm) to keep yourself safe and avoid disappointment of car parks being full or perhaps move on to a quieter site if you find one too busy."

TIME TO EXPLORE!

Whilst we haven't been able to enjoy our usual family activities, local shows and village events, Dartmoor still has much to see and do.

Postbridge lies in the centre of Dartmoor (between Moretonhampstead and Two Bridges on the B3212) and is an ideal place to explore Dartmoor's archaeology.

Our visitor centre has been closed over the winter for some exciting renovations and it is due to be open very soon. We have built a new extension to create an exciting new exhibition space telling the story of the Bronze Age on Dartmoor.

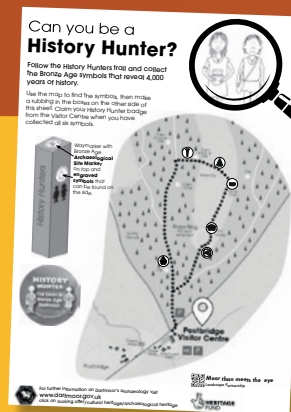
The new space will be full of fascinating facts, engaging games and touchscreen technology for all ages.

Become a Bronze Age hunter, build your own round house, or find out about the intriguing history that shaped Dartmoor, including the exciting finds at Whitehorse Hill complete with replicas of the jewellery.

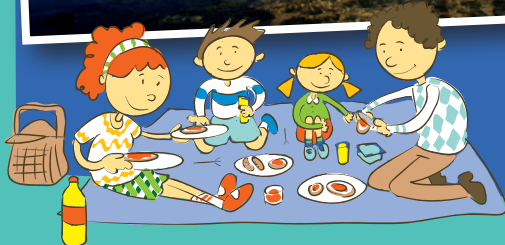


You can download and print the Bronze Age Hunter activity sheet here before you go....

<https://www.dartmoor.gov.uk/enjoy-dartmoor/places/postbridge>



MORE TO DO AROUND POSTBRIDGE:



Just a short walk from our Visitor Centre is one of the finest examples of a clapper bridge in the country and is thought to date back to medieval times and would probably have replaced stepping stones to help pack horses cross the river. The bridge has two central piers spanned by three large slabs, or clappers.

Postbridge is a great base to spend a day - there are plenty of walking and cycling routes in Bellever Forest, and is ideal for a picnic by the river... just be careful to avoid really busy times as Ranger Ralph advises on the front page.

Bellever Forest is also a perfect place to explore the many archaeological remains, including round houses, stone rows and a burial cist.

**Address: Postbridge PL20 6TH, B3212
Moretonhampstead to Two Bridges Road.**

RANGER RALPH'S SUMMER SHOW

We can't get to a real summer show this year so I have designed a pretend show programme for you. Look at the poster and then answer the questions. Perhaps you could design your own show programme. What events would you include at your show?

Important: This is not a real event, just a pretend one... although it does sound like a fun day out to me.



Look at the poster to the right and then answer the questions

1. The fete closes 8 hours after it starts. What time will this be?

2. At what time can you see the home grown vegetables display?

3. Which two events are on at exactly the same time?

4. Name all the events that are taking place at 3.00pm?

5. At what time do dogs and their owners need to arrive if entering the Dog Agility class?

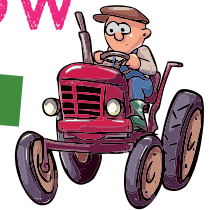
6. How much would it cost for 2 adults and 2 children under 16 to go into the show?

RANGER RALPH'S SUMMER SHOW



Dartmoor National Park

Saturday



PROGRAMME OF EVENTS

Show Opens	10.00am
Dog Agility Competition	2.30pm
Raffle Tickets on sale	11.00am – 5.30pm
Cream Teas served	3.00pm – 4.30pm
Birds of Prey flying display	4.15pm
Children's Sports	1.15pm
Parade of vintage tractors	12.30pm
Judging of sheep and cattle classes	10.30am
Trade Stalls	All day
Show jumping	2.30pm

Entrance fee: Adults £5.00, Children (under 16) £2.00 per person.
Family ticket £12.00 (2 adults and up to 3 children)
Parking: £1 per car

HORTICULTURAL TENT

Exhibitions of Vegetables, Flowers, Cookery, Flower Arranging, Winemaking, Photography, Handicrafts, Children's Crafts, all found in the Horticultural Tent. The tent will be open to the public all day after the judging has taken place at approx. 11am

Owners and entrants for the Dog Agility Competition need to arrive 15 minutes before this event. In the event of rain, the trade stands will be held in the neighbouring undercover barn. Call 07856 769432 for more information

7. What will happen if it rains on the day?

Answers to Ranger Ralph's Summer Show
1. 6 pm
2. After 11.00 am
3. Dog Agility and Show jumping
4. Raffle tickets on sale, Cream Teas, Horticultural Tent and Trade Stalls
5. 2.15 pm
6. £12 for a family ticket
7. The show will be held in the neighbouring barn



JOIN RANGER RALPH'S CLUB

Ranger Ralph's Club is open to all children between the ages of 5-12. When you become a member you will receive a membership starter pack, containing a membership card (which will give you access to FREE Ranger Ralph guided activities), a ruler, a Ranger Ralph badge, a pencil, stickers, and a folder to keep it all in. You will then receive a quarterly newsletter full of seasonal news, competitions, things to make and do and of course the dates of our events. Your membership will last a year - that's 4 newsletters.

Membership is just £10 per child per year.

"It's a club where you go to Dartmoor and explore."

"Great fun, we didn't want it to end!"

APPLICATION FORM

PLEASE PRINT NAME AND ADDRESS

Name:

Address:

Postcode:

Date of birth:

Adult's signature:

New member:

Renewal:

Membership no:

Where did you hear about us:

Please send enclosing a cheque made payable to 'Dartmoor National Park Authority' to: Ranger Ralph, Dartmoor National Park Authority, Parke, Bovey Tracey, Newton Abbot, Devon, TQ13 9JQ.

JOIN NOW RANGER RALPH CLUB
membership is just £10 per child per year!

(Please allow a minimum of two weeks to receive your first mailing.)

Data protection

I consent to Dartmoor National Park Authority keeping the above details securely. Dartmoor National Park will not pass them on to any other organisation. They will only use this information for Ranger Ralph Club activities, contact, newsletters and promotions.

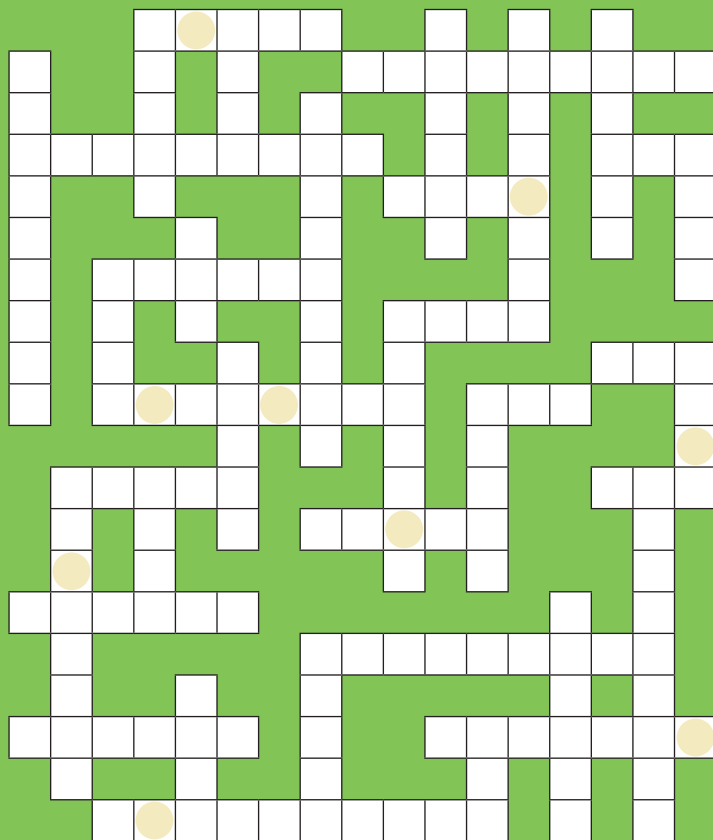
Due to data protection law memberships cannot be processed without this consent.

We may contact you from the time to time with details of additional activities, offers and events on Dartmoor that we think you might be interested in. Please tick the box to show that you are willing to receive this additional information.

PREHISTORIC CRISSCROSS PUZZLE

Have a go at my Prehistoric Crisscross puzzle before you visit some of these finds at Postbridge. Fill in the grid with the words below which are all prehistoric terms which can be seen all across the high ground of Dartmoor.

Clue: there is only one 10 letter word.



The letters in the circles will reveal the name of a prehistoric monument of Dartmoor

3-letter words

ASH
HUT
POT
ROW
TIN
URN

4-letter words

AXES
BANK
BERM
CELT
HORN
IRON
LEAT
WALL

5-letter words

CAIRN
FIELD
FLAKE
KNIFE
POUND
QUERN
STONE

6-letter words

BARROW
BEAKER
BRONZE
DAGGER
DOLMEN
HEARTH

7-letter words

CHAMBER
LYNCHET

8-letter words

CHARCOAL
KISTVAEN
FRAGMENT

9-letter words

ARROWHEAD
ENCLOSURE
IMPLEMENT
KERBSTONE
SPEARHEAD
WHETSTONE

10-letter words

SETTLEMENT

