



**Dartmoor National Park Authority**

**Dartmoor National Park  
Household Income Data 2014 Report**

**CACI: Paycheck**

## **Introduction**

The Paycheck dataset<sup>1</sup> is a modelled index of annual household income which has been developed by the company CACI. Paycheck is based on data from lifestyle surveys, the Census, and other market research. CACI add new sources each year when producing the paycheck dataset so figures cannot be compared with figures for previous years.

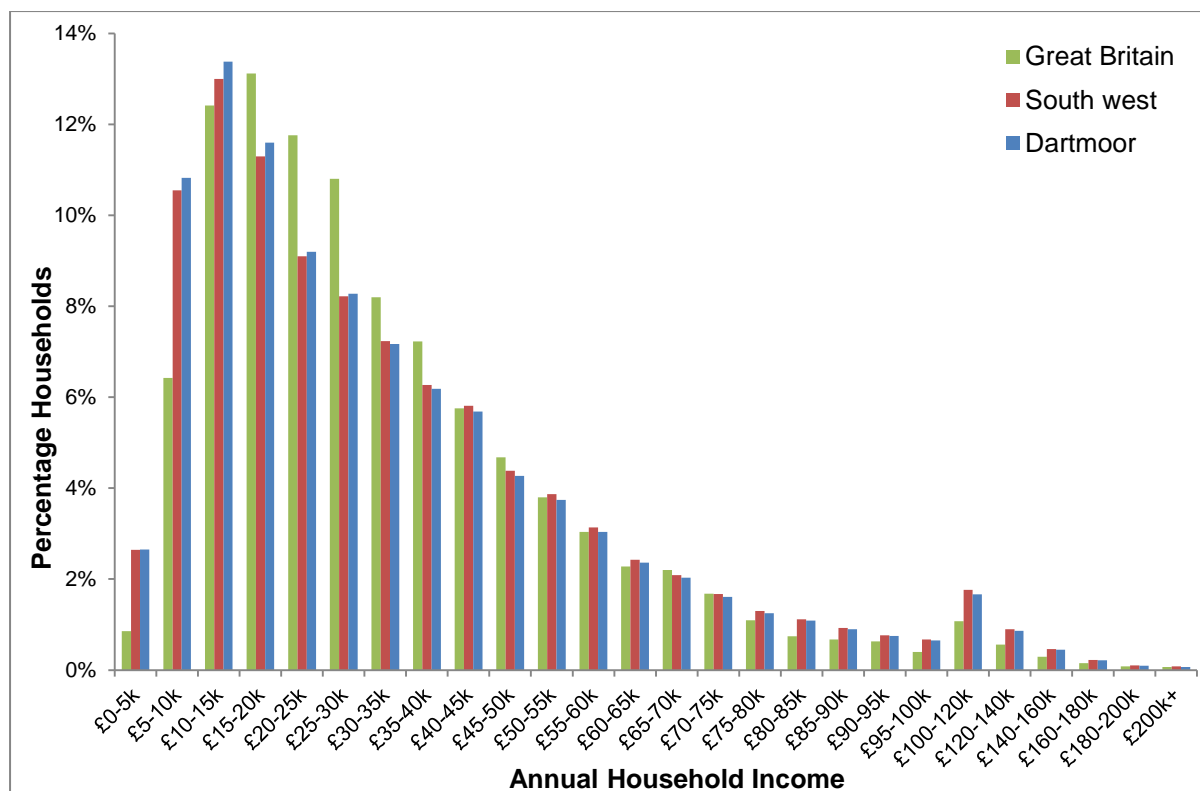
## **Median Household Income**

At postcode level, the median household income for DNP varied from £9,047 to £63,333. At Parish level, the median household income for DNP varied from £23,663 to £39,541. The national average was £27,510.

According to Paycheck the lower quartile household income for Dartmoor National Park was £15,330.

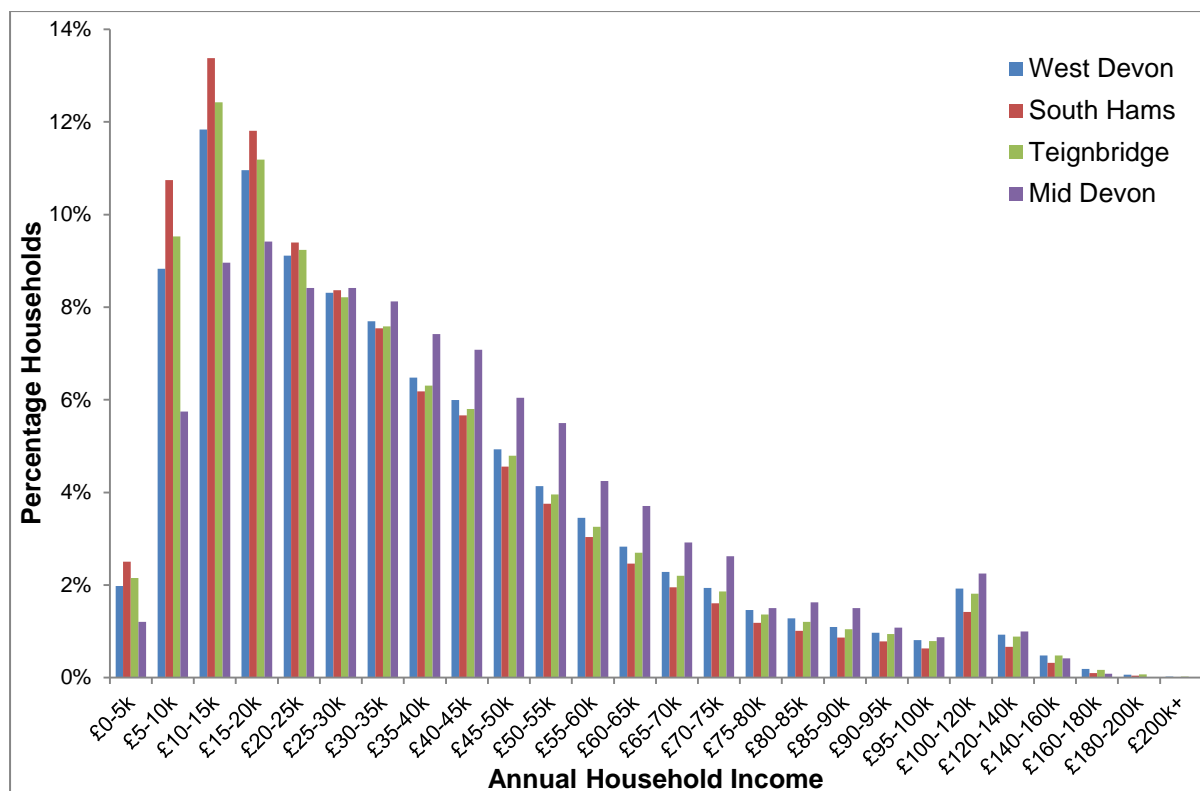
---

<sup>1</sup> © CACI Limited 1996-2014. This report shall be used solely for academic, personal and/or non-commercial purposes.



**Figure 1:** Percentage of households in each Annual Household Income band compared to the national averages for Great Britain and the South West (CACI Paycheck 2014). © CACI Limited 1996-2014. This report shall be used solely for academic, personal and/or non-commercial purposes.

Figure 1 shows that Dartmoor has significantly higher percentage of households earning between £0-£10,000 compared to the UK average. The difference between Dartmoor and Great Britain is most prominent between £15-30k where earnings in Dartmoor are significantly less than the average. Figure 1 illustrates that Dartmoor's annual household income closely mirrors the South West.



**Figure 2:** Percentage of Households in each Annual Household Income band separated by Districts within Dartmoor National Park (CACI Paycheck 2014). © CACI Limited 1996-2014. This report shall be used solely for academic, personal and/or non-commercial purposes

Mid Devon is the highest earning district with a high percentage of households within the £30-75k bracket compared to the other districts. However it should be noted that this district only has one Parish within the boundary of Dartmoor. West Devon and Teignbridge have a consistently higher percentage of households earning between £25-£200k. South Hams has the highest percentage of households earning between £0-25k.

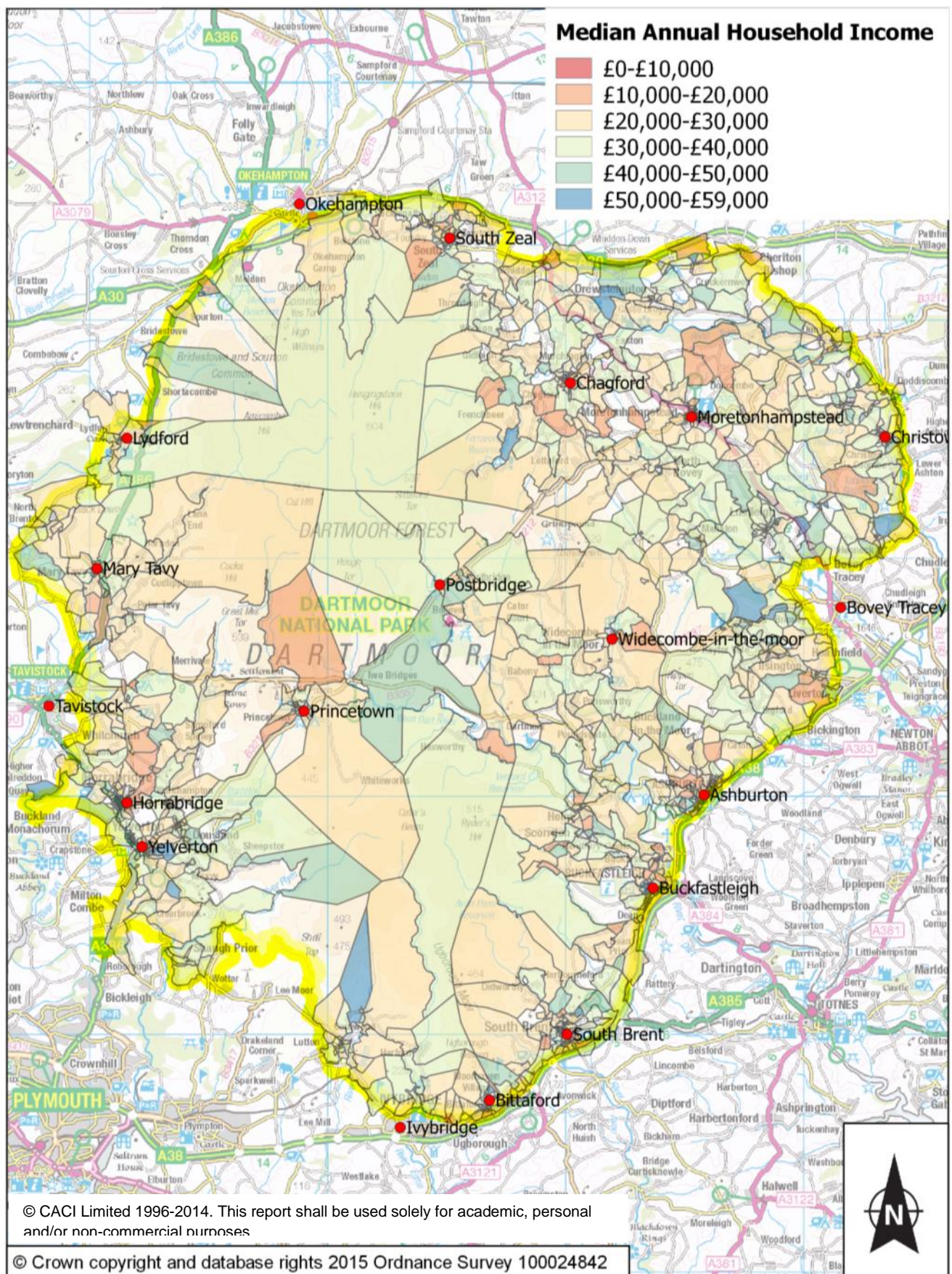


# Dartmoor National Park Authority

## Median Annual Household Income

Source: CACI Paycheck, 2014

Scale 1:200



**Figure 3:** Median Household Income of Postcodes on Dartmoor (postcodes with 1 or 3 dwellings have been removed). Source: CACI, Paycheck 2014

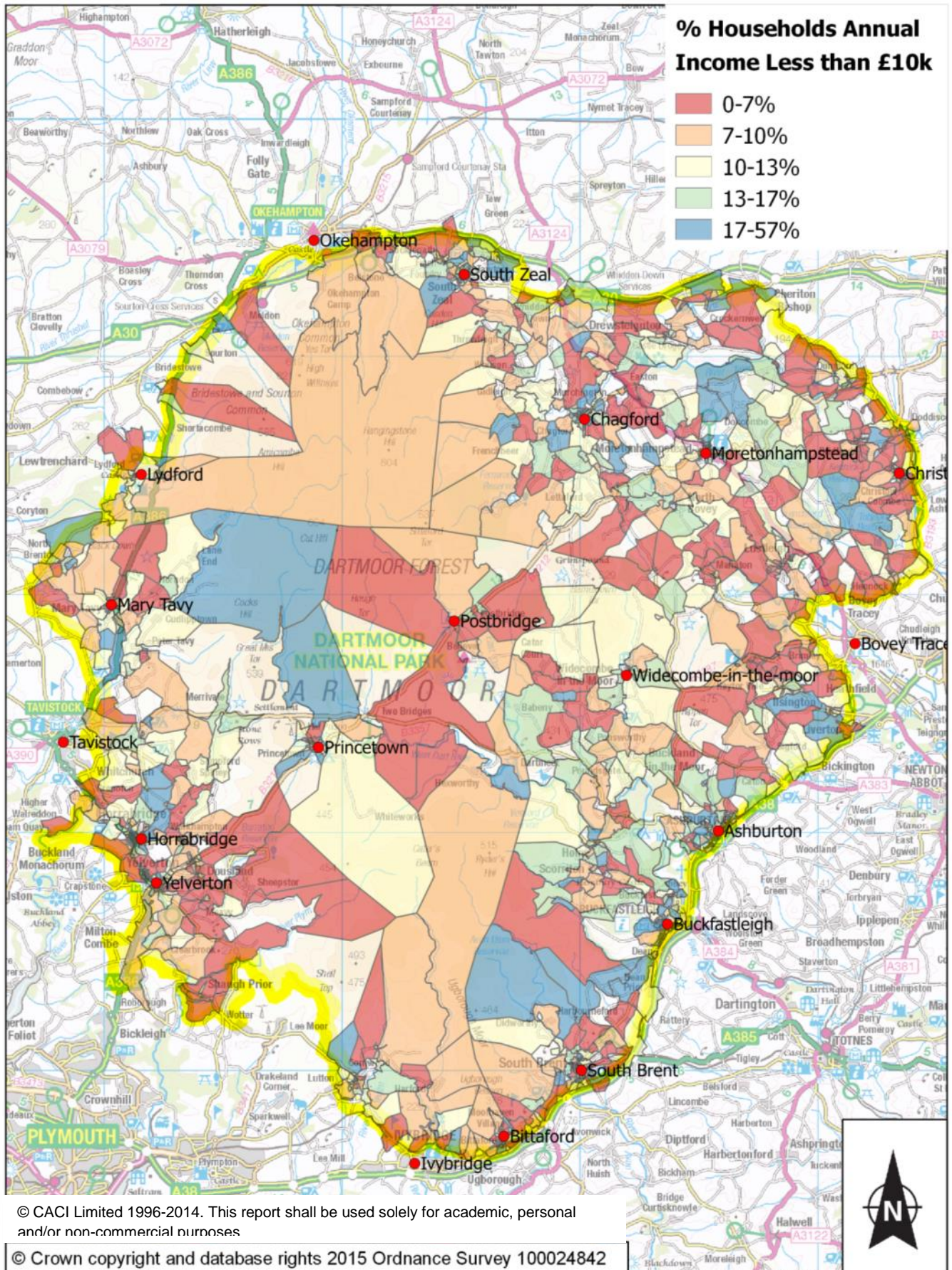


# Dartmoor National Park Authority

Percentage Households Annual Income Less than £10k

Source: CACI Paycheck, 2014

Scale 1:220,000



**Figure 4:** Percentage of Households Annual Income of less than £10k by postcode (postcodes with 1 or 3 dwellings have been removed). Source: CACI, Paycheck 2014

Figure 3 illustrates that the median household incomes are generally higher surrounding settlements when compared to the centres. The open countryside has a large difference between median annual incomes with most areas between £20,000-£40,000 but some pockets of low and higher incomes. Figure 3 shows a pattern of low median annual household income at the centre of towns with larger incomes further out. Chagford has a number of low income postcodes in the centre of the village, particularly to the south. Christow has a high number of high incomes surrounding it. Ashburton, Widecombe-in-the-Moor and Buckfastleigh have a high number of low median annual incomes. The lowest median income is in Buckfastleigh. South Brent, Yelverton and Horrabridge have some high median incomes on the outskirts but the centre of the town has a low average. Horrabridge has an area of median annual income of £50,000-£59,000 to the south. However Bittaford, a smaller settlement, has a large amount of high median incomes in the centre of the village.

Ashburton has a high number of postcodes with a median income of £0-£10,000 to the north. The centre of the settlement has higher median incomes but a wide variation. To the north of Ashburton there is an area with 17-57%<sup>2</sup> income less than £10,000, the percentage is lower in the centre of the settlement (13-17%).

Buckfastleigh has a high number of postcodes with a median income of between £10,000 and £30,000 with none in the £0-£10,000 range. There is a high volume of postcodes with percentage annual income less than £10,000 in the centre of the settlement.

Chagford shows some variation with a high number of postcodes in the centre of the village between £10,000-£30,000 and higher median incomes on the outskirts. There are areas of 17-57% of households with an income of less than £10,000 in the centre of the village.

Christow doesn't have any postcodes with a median annual income of between £0-£10,000 and a high amount of those in the £40,000 to £50,000 bracket. There are a number of postcodes with very low percentage of annual income less than £10,000 (0-7% and 13-17%) but an area to the north east of the village with a number of postcodes at 17-57%.

Horrabridge consists of the majority of postcodes between £10,000-£30,000 with pockets of higher incomes. The percentage of households with annual income less than £10,000 is higher to the north east (17-57%) and low to the south west (0-7%).

In Mary Tavy there is a high variation of median incomes with the mid-range of £10,000-£40,000 common in the centre. However the centre has postcodes with 17-

---

<sup>2</sup> The Percentage Households Annual Income Less than £10,000 has been split into five Quantile (equal count) bands. This method will decide the classes such that the number of values in each band is the same.



57% of household incomes less than £10,000, this percentage reduces going out from the centre.

Moretonhampstead has an area of lower incomes, 17-57% below £10,000, to the north east and a lower percentage, and therefore higher earners, to the south west and north west, outside the settlement boundary.

Princetown shows a divide between the north of the settlement and the south. The north, surrounding the prison, has a median income of £30,000-£40,000 and 0-7% of incomes below £10,000. However median incomes drop to between £10,000-£20,000 around the centre of the town. To the south east and south west 17-57% of households annual income is below £10,000.

South Brent has a high percentage of households (13-57%) with incomes below £10,000 in the centre but only 0-7% to the north. The median annual income in the centre of South Brent is £10,000-£30,000.

Yelverton shows a mix of incomes. Incomes in the centre of the settlement are in the mid-range however there is a pocket of postcode with incomes between £50,000-£59,000 to the south east. There are no postcodes with an median annual income of £0-£10,000. The majority of the settlement has 0-7% of households with an income of less than £10,000 and only a small area of 17-57%.

Figure 4 shows a similar pattern to Figure 3, with the highest percentage of people with incomes under £10,000 in the centre of the towns and few people earning below £10,000 surrounding this. Princetown shows a high number of postcodes with 17-57% with an annual household income of less than £10,000 to the south but has an area of 0-7% to the north. South Brent shows a large variation with a high number of postcodes with 0-7% but also the postcode with the highest percentage, 57% of median incomes less than £10,000. Areas of the open moorland show significant variations. South Zeal shows significant variation with postcodes with 0% and areas of 17-57% annual incomes below £10,000.

There tends to be low annual incomes in the centre of settlements with higher incomes further out and into the open countryside. There seems to be rural highs along the Teign Valley and the A38 corridor, particularly near South Brent and Bittaford. The pattern of low annual incomes in the centre of settlements surrounded by the higher annual incomes could be due to larger properties on the outskirts.



## **Appendix 1 – Settlement Maps**

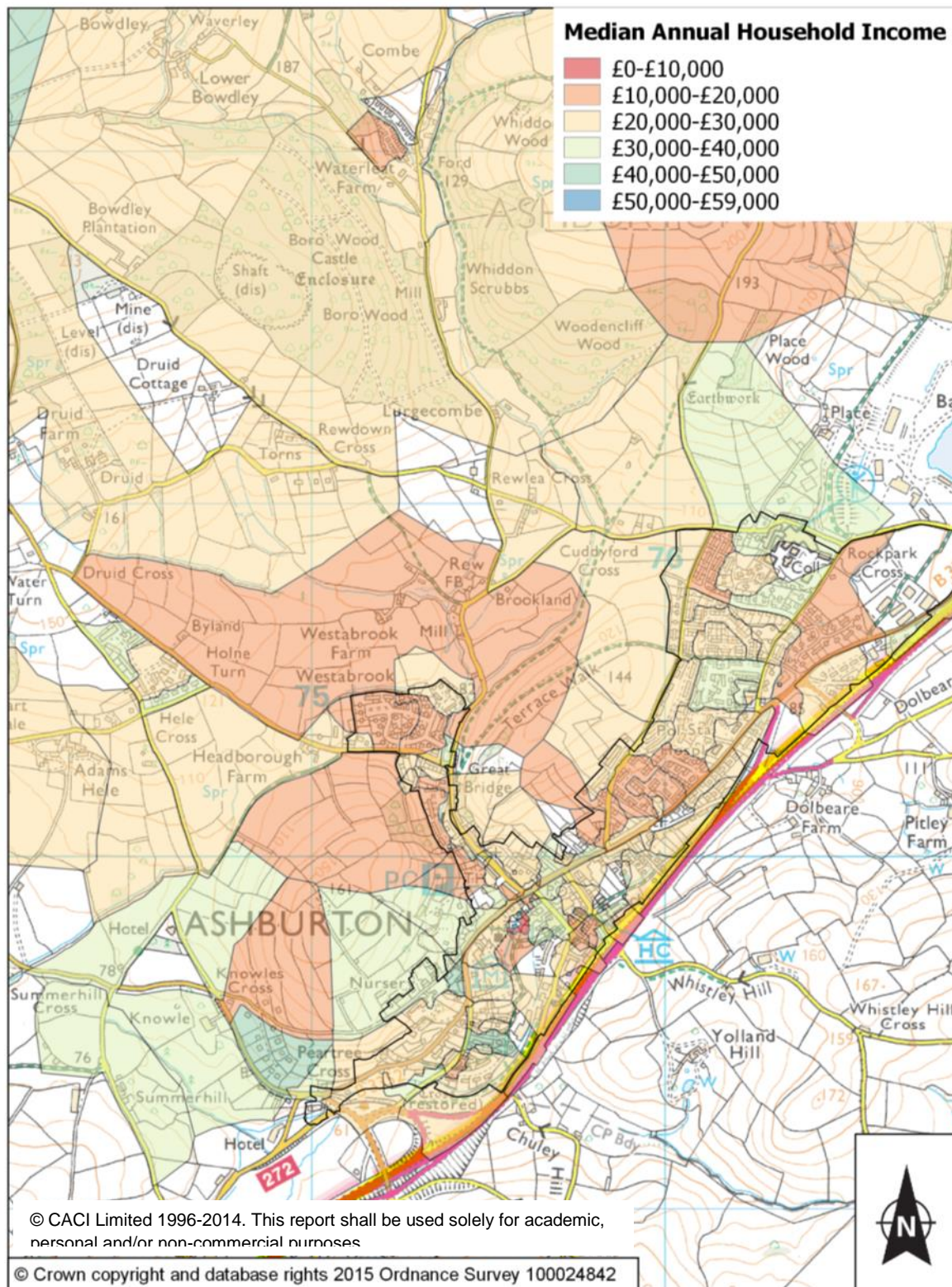
# Dartmoor National Park Authority

## Median Annual Household Income - Ashburton

Source: CACI Paycheck, 2014



Scale 1:200



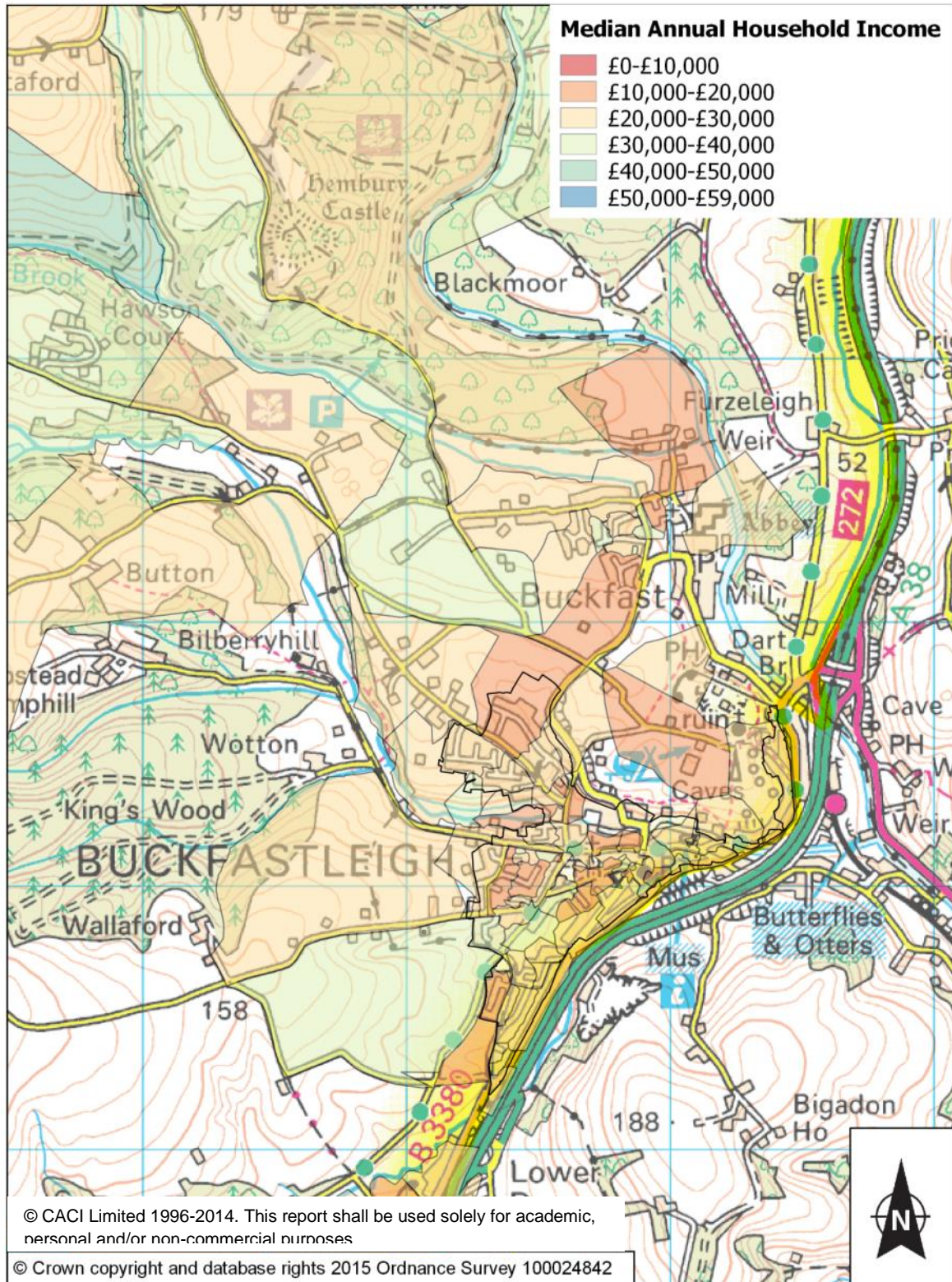


# Dartmoor National Park Authority

## Median Annual Household Income - Buckfastleigh

Source: CACI Paycheck, 2014

Scale 1:200



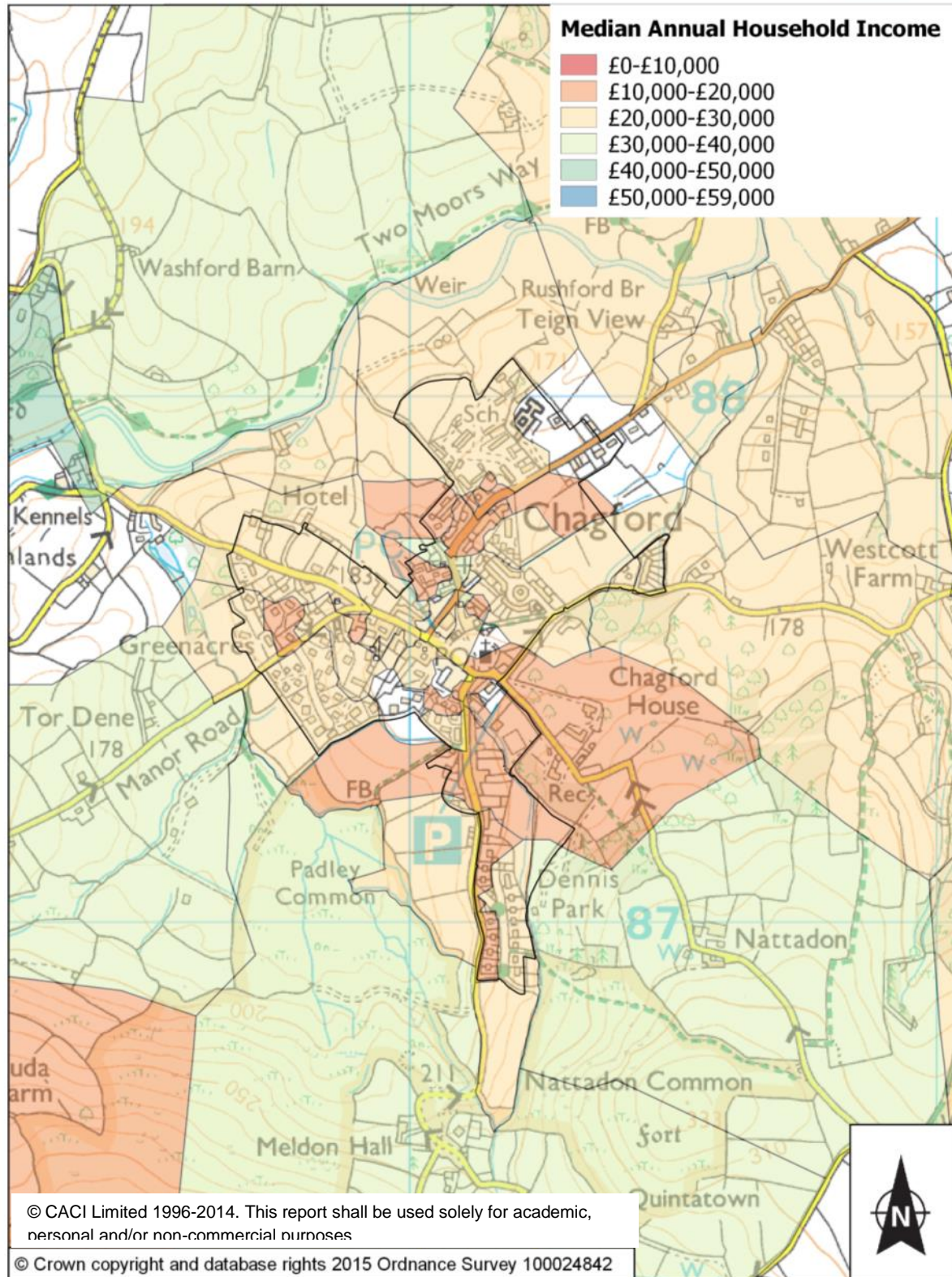


# Dartmoor National Park Authority

## Median Annual Household Income - Chagford

Source: CACI Paycheck, 2014

Scale 1:200



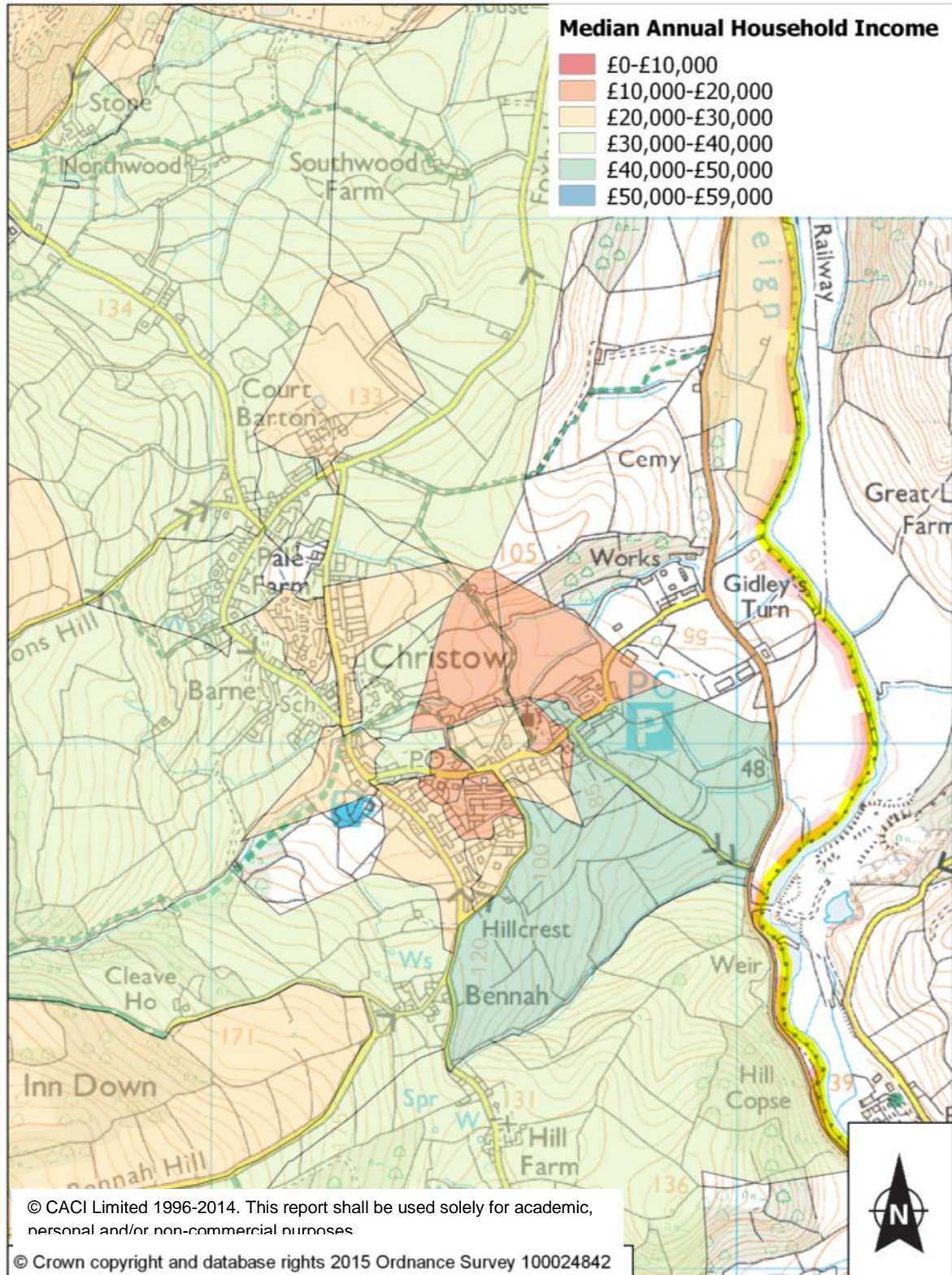


# Dartmoor National Park Authority

## Median Annual Household Income - Christow

Source: CACI Paycheck, 2014

Scale 1:200



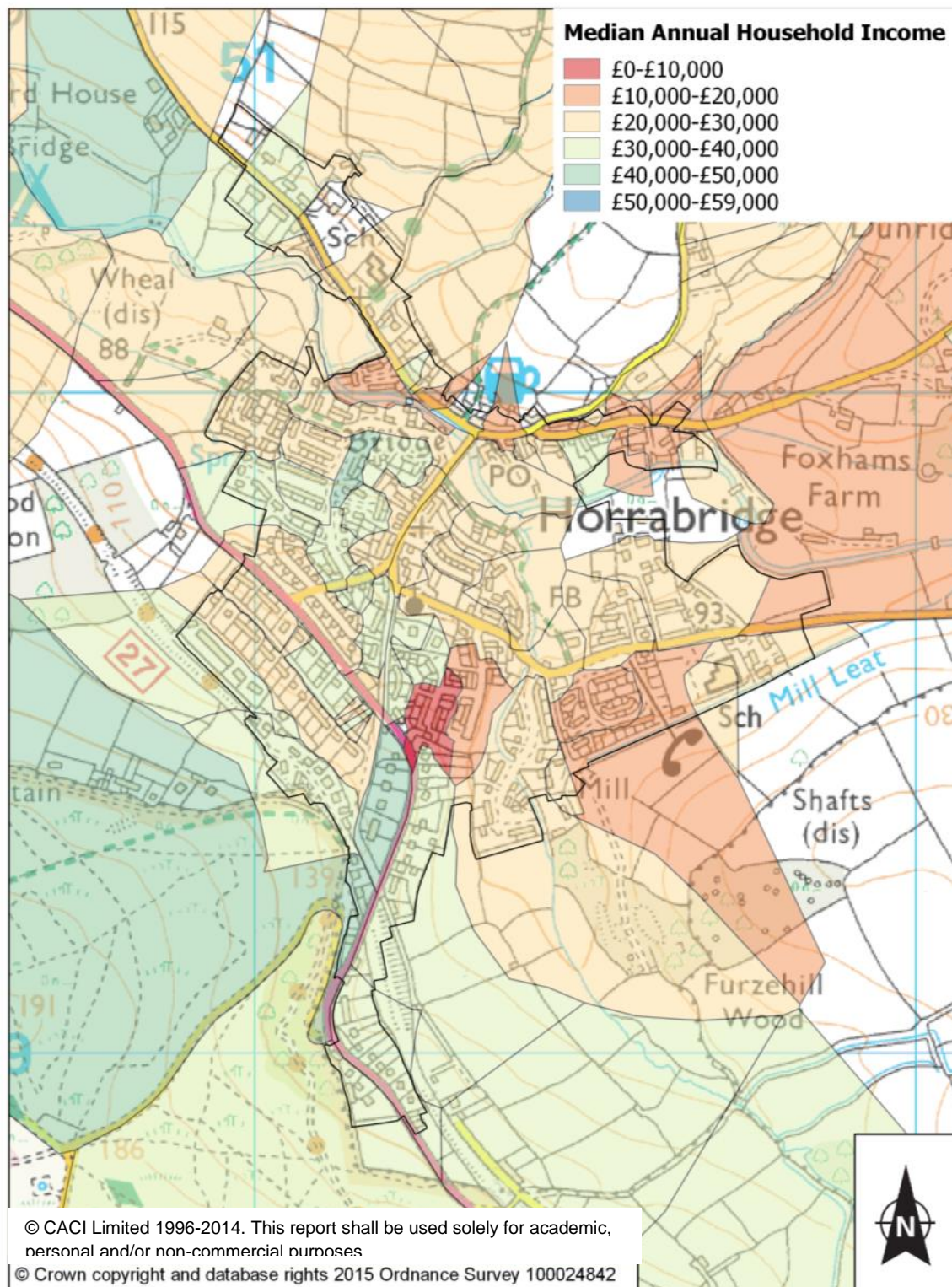


# Dartmoor National Park Authority

## Median Annual Household Income - Horrabridge

Source: CACI Paycheck, 2014

Scale 1:200



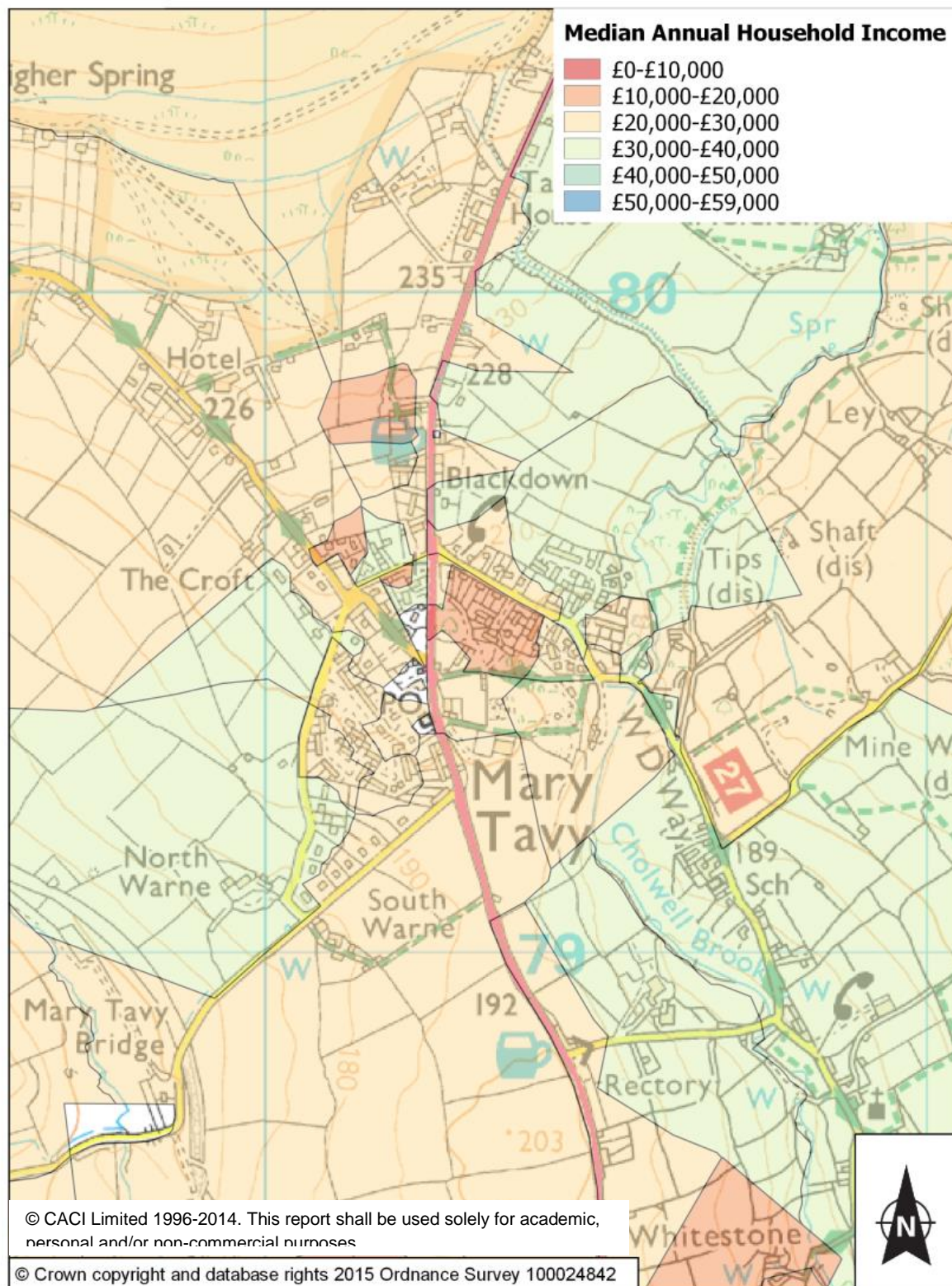


# Dartmoor National Park Authority

## Median Annual Household Income - Mary Tavy

Source: CACI Paycheck, 2014

Scale 1:200



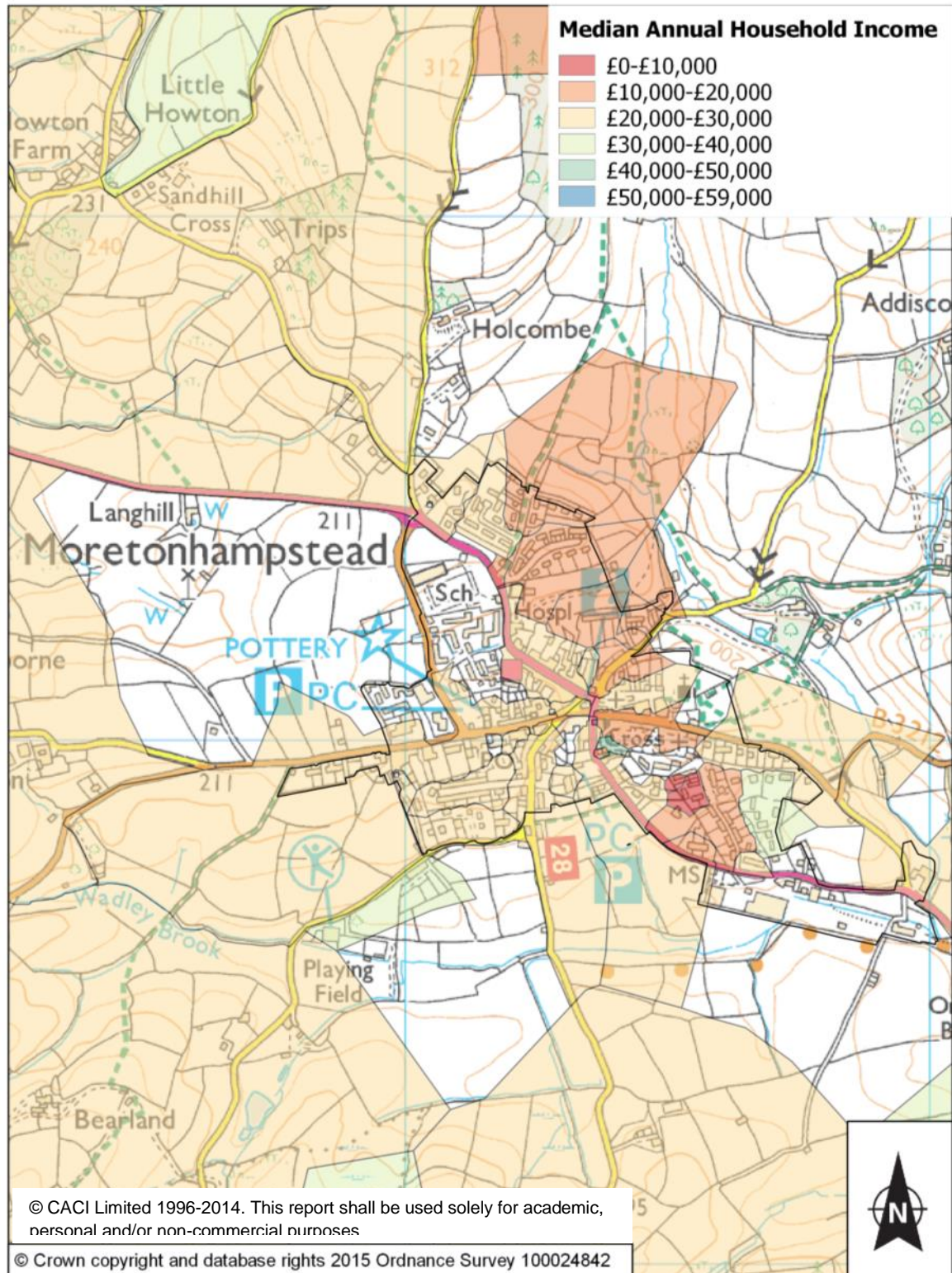


# Dartmoor National Park Authority

## Median Annual Household Income - Moretonhampstead

Source: CACI Paycheck, 2014

Scale 1:200



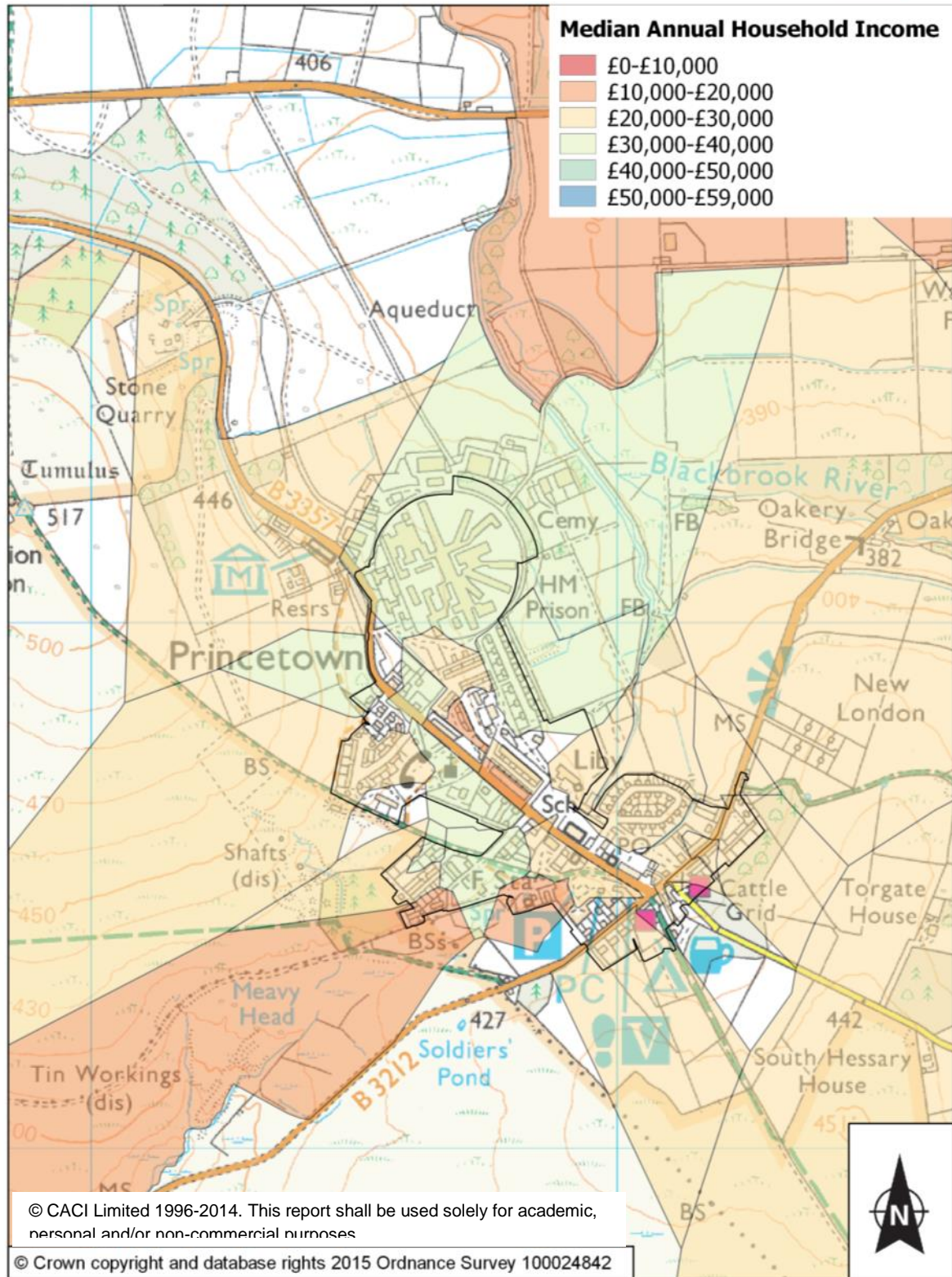


# Dartmoor National Park Authority

## Median Annual Household Income - Princetown

Source: CACI Paycheck, 2014

Scale 1:200



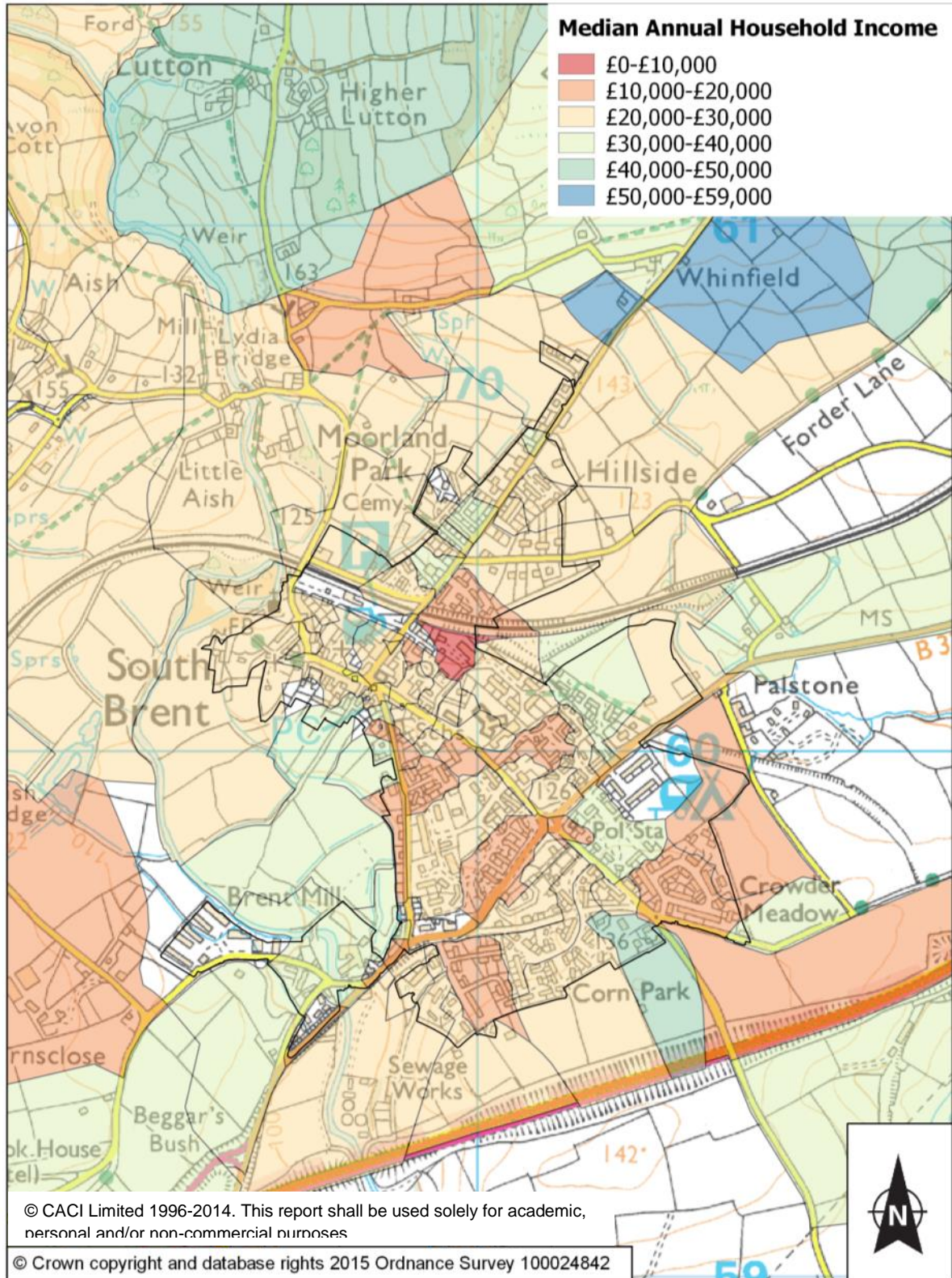


# Dartmoor National Park Authority

## Median Annual Household Income - South Brent

Source: CACI Paycheck, 2014

Scale 1:200





# Dartmoor National Park Authority

## Median Annual Household Income - Yelverton

Source: CACI Paycheck, 2014

Scale 1:200

