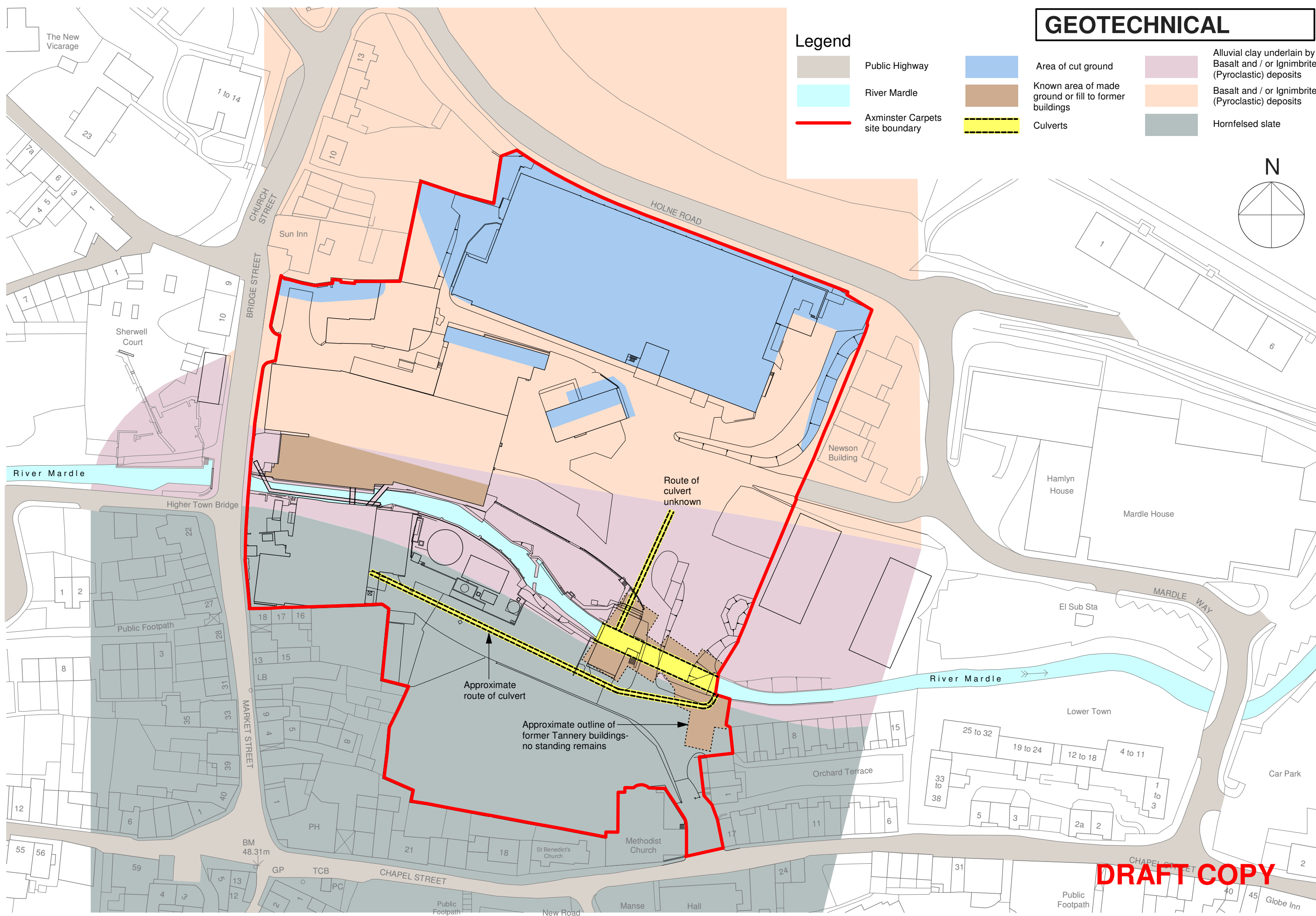
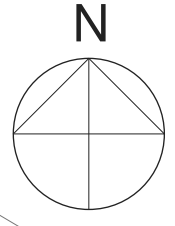


# GEOTECHNICAL

## Legend

- Public Highway
- River Mardle
- Axminster Carpets site boundary
- Area of cut ground
- Known area of made ground or fill to former buildings
- Culverts
- Alluvial clay underlain by Basalt and / or Ignimbrite (Pyroclastic) deposits
- Basalt and / or Ignimbrite (Pyroclastic) deposits
- Hornfelsed slate



DRAFT COPY