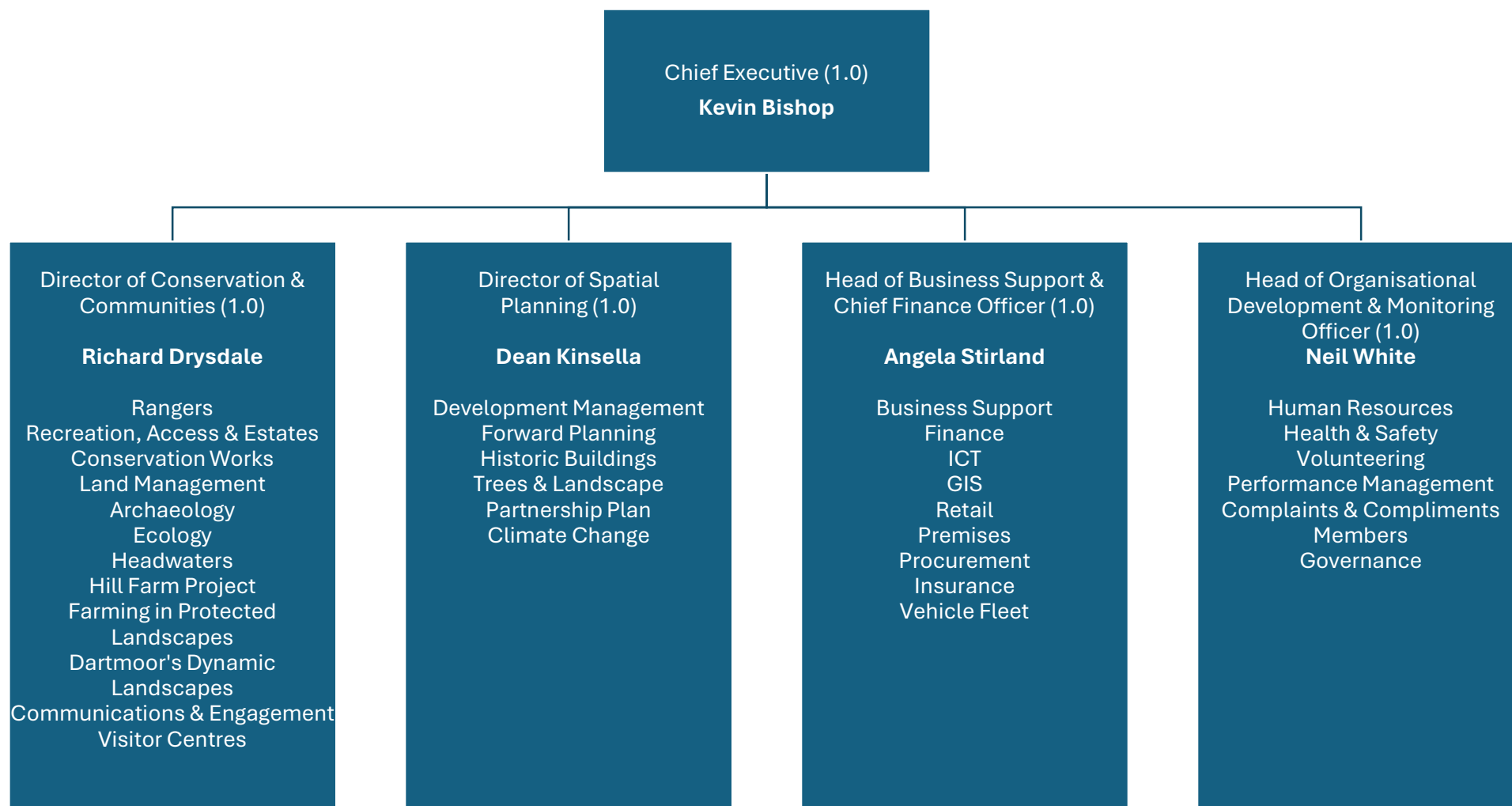


**Dartmoor National Park Authority**  
**Leadership Team - 1 April 2025**



Dartmoor National Park Authority employees whose remuneration exceeds £50,000:

**Chief Executive** £98,563 - £108,008  
**Director of Conservation & Communities** £66,871 - £73,079  
**Director of Spatial Planning** £66,871 - £73,079

**Head of Business Support** £49,764 - £52,805  
**Head of Organisational Development** £49,764 - £52,805