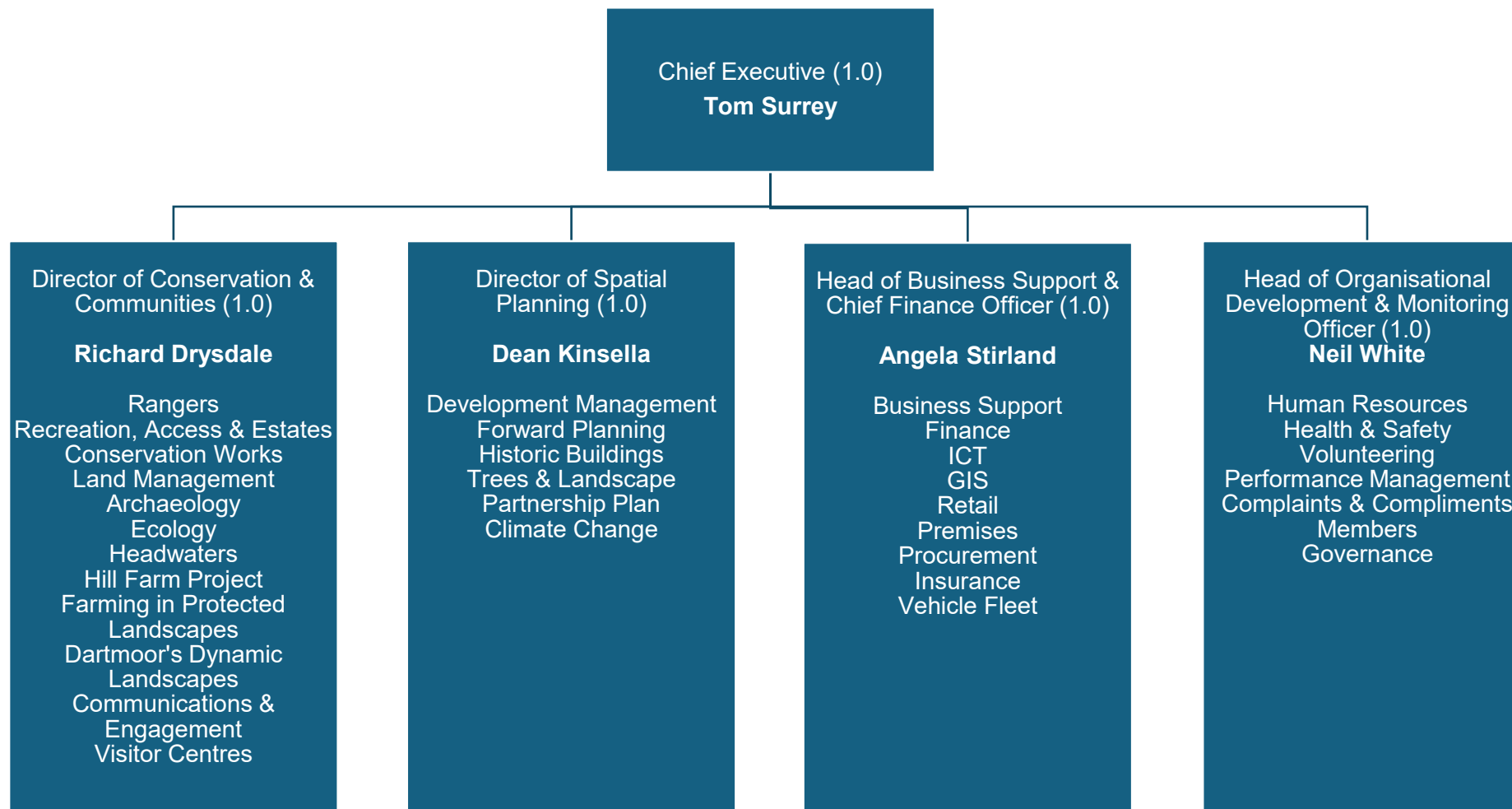


**Dartmoor National Park Authority
Leadership Team - 1 April 2026**



Dartmoor National Park Authority employees whose remuneration exceeds £50,000:

Chief Executive	£101,717 - £111,547	Head of Business Support	£51,356 - £54,495
Director of Conservation & Communities	£69,011 - £75,416	Head of Organisational Development	£51,356 - £54,495
Director of Spatial Planning	£69,011 - £75,416		