



## DARTMOOR LOCAL PLAN

guiding planning applications in Dartmoor National Park

# Settlement Profile: *Horrabridge*

**September 2019**

This settlement profile has been prepared by Dartmoor National Park Authority to provide an overview of key information and issues for the settlement. It has been prepared in consultation with Parish/Town Councils and will be updated as necessary.



# Introduction

*Horrabridge is a small town on the west of Dartmoor with its historic core centred on a Grade I listed bridge across the River Walkham. Its original industry was associated with cloth mills and copper and tin mining. The town's modern housing lies in sharp contrast to the modest buildings that form the historic core.*

## Main Shopping Area

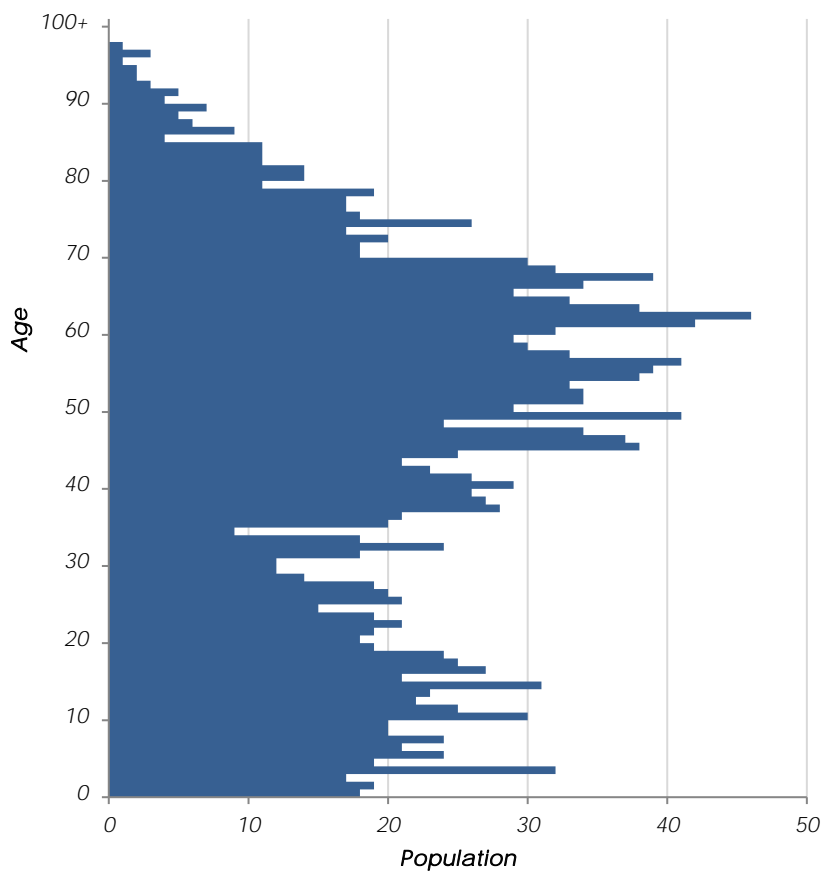
*The main shopping area in Horrabridge is centred on the north part of Station Road, and across the bridge on Commercial Road.*



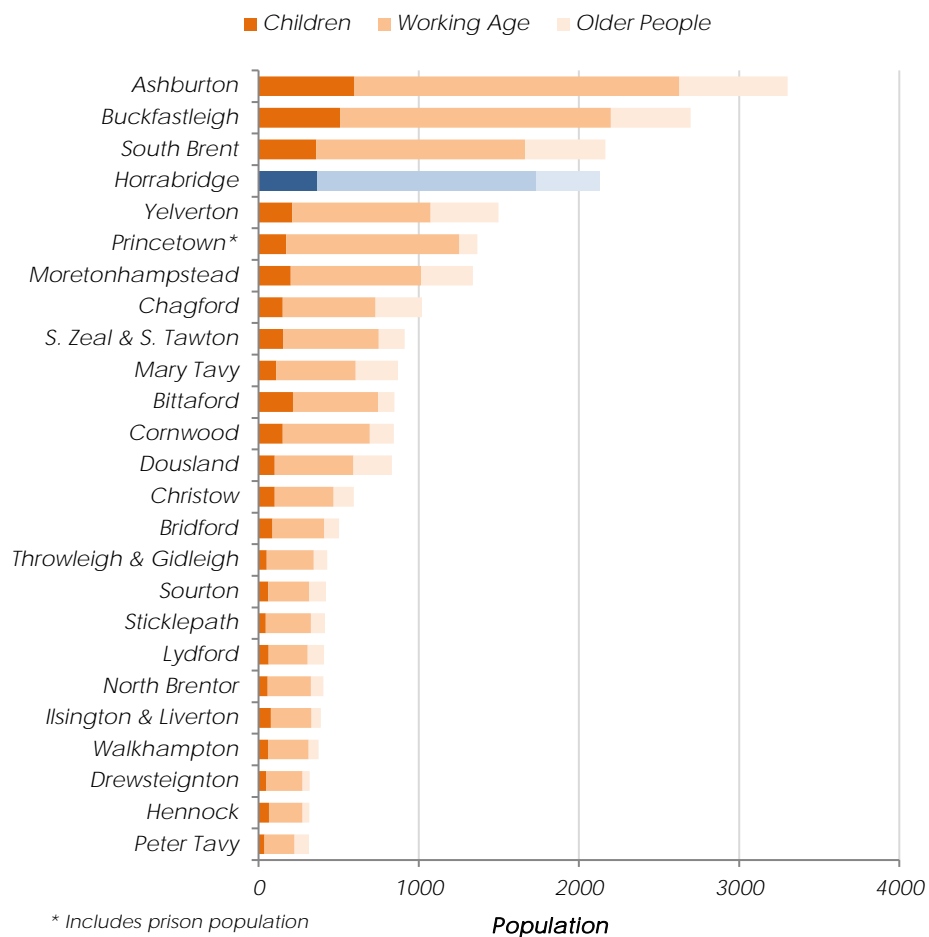
Population **2,129**

Census 2011, defined by best-fit Output Areas

## Age Profile (Census 2011)



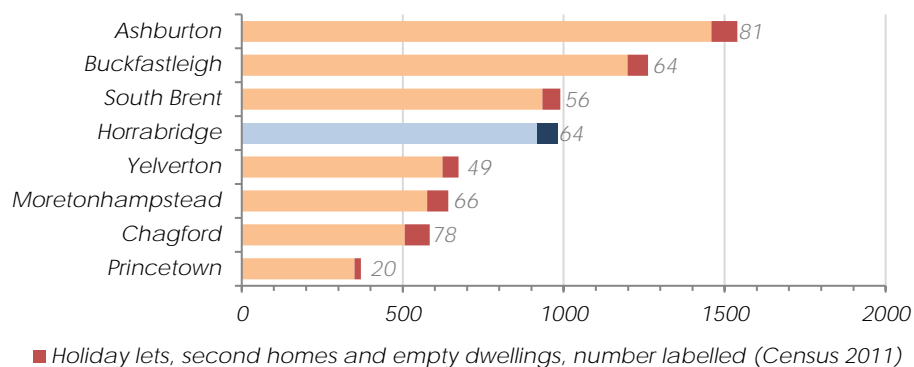
## Settlement comparison (Census 2011)



\* Includes prison population

## Current Housing Stock

Census 2011, defined by best-fit Output Areas



## Current Affordable Housing Stock

Bedrooms					
1	2	3	4	5+	Total
50	59	57	0	2	168

Devon Communities Together, 2016

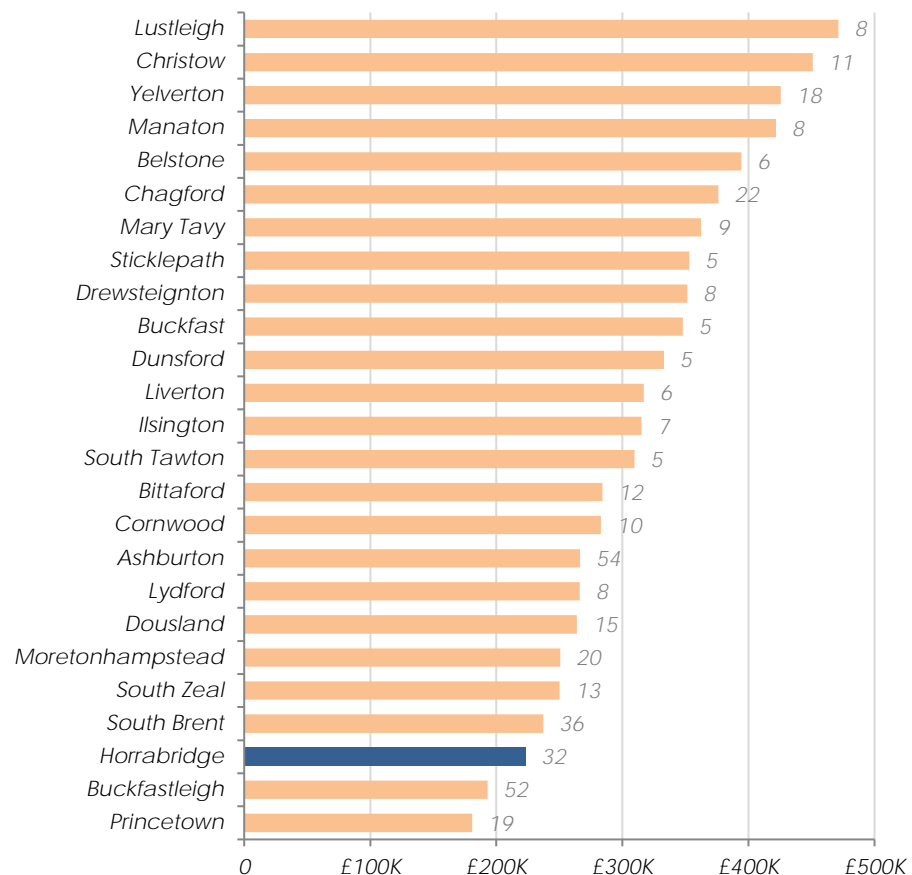
## Identifying Housing Need

Horrabridge's affordable housing need will be identified from housing need within the following Parishes:

Buckland Monachorum, Horrabridge, Sampford Spiney, Walkhampton, and Whitchurch

## Average House Prices 2016 Land Registry, 2016

Excluding settlements with less than five sales, number of sales labelled



Sites allocated for development in current local plan:

## 2 sites allocated for housing

Total land area of 1.76 Ha

Planning permission granted on Walkham Meadow site (HOR1) for 10 affordable houses

22 affordable units have been delivered on other sites since 2008

The August 2012 Housing Needs Assessment recommended:

## 9 affordable homes needed within 5 years

4 one-bed, 4 three-bed and 1 four-bed

6 rented and 3 shared ownership properties

### Issues Paper Consultation (Dec 2016)

The following summarises issues identified by Horrabridge's residents:

- Encourage public access to river banks
- Encourage light quarrying of stone in appropriate locations

### Infrastructure delivery

We are aware of the following items of infrastructure which are needed and have a reasonable prospect of being funded in the next 20 years:

- Additional car parking requirements (detailed assessment needed)
- Recreational open space to be provided as part of development at New Park (HOR2)

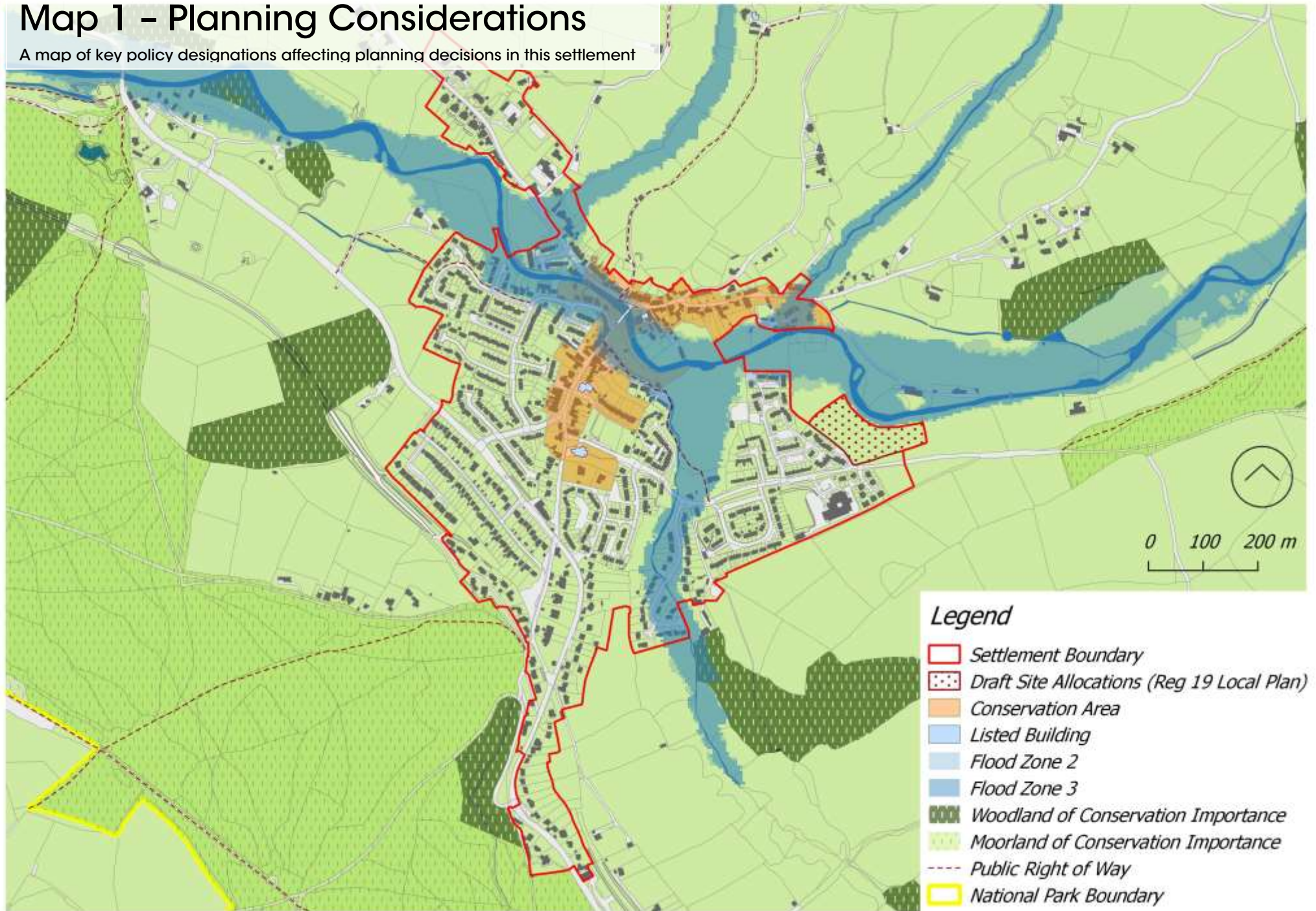
### Open Space, Sport and Recreation

We are aware of the following priorities for improving Open Space, Sport and Recreation facilities:

- Opportunities to enhance Horrabridge's quality of outdoor sport and play space should be taken
- Investment is required to upgrade the existing sports pavilion
- Provision of new play space should be prioritised, particularly where new family housing is proposed
- Contributions for equipped play and outdoor sports facilities should be sought from related development, as the identified shortfalls will be exacerbated by allocated development sites in the Regulation 19 Local Plan.

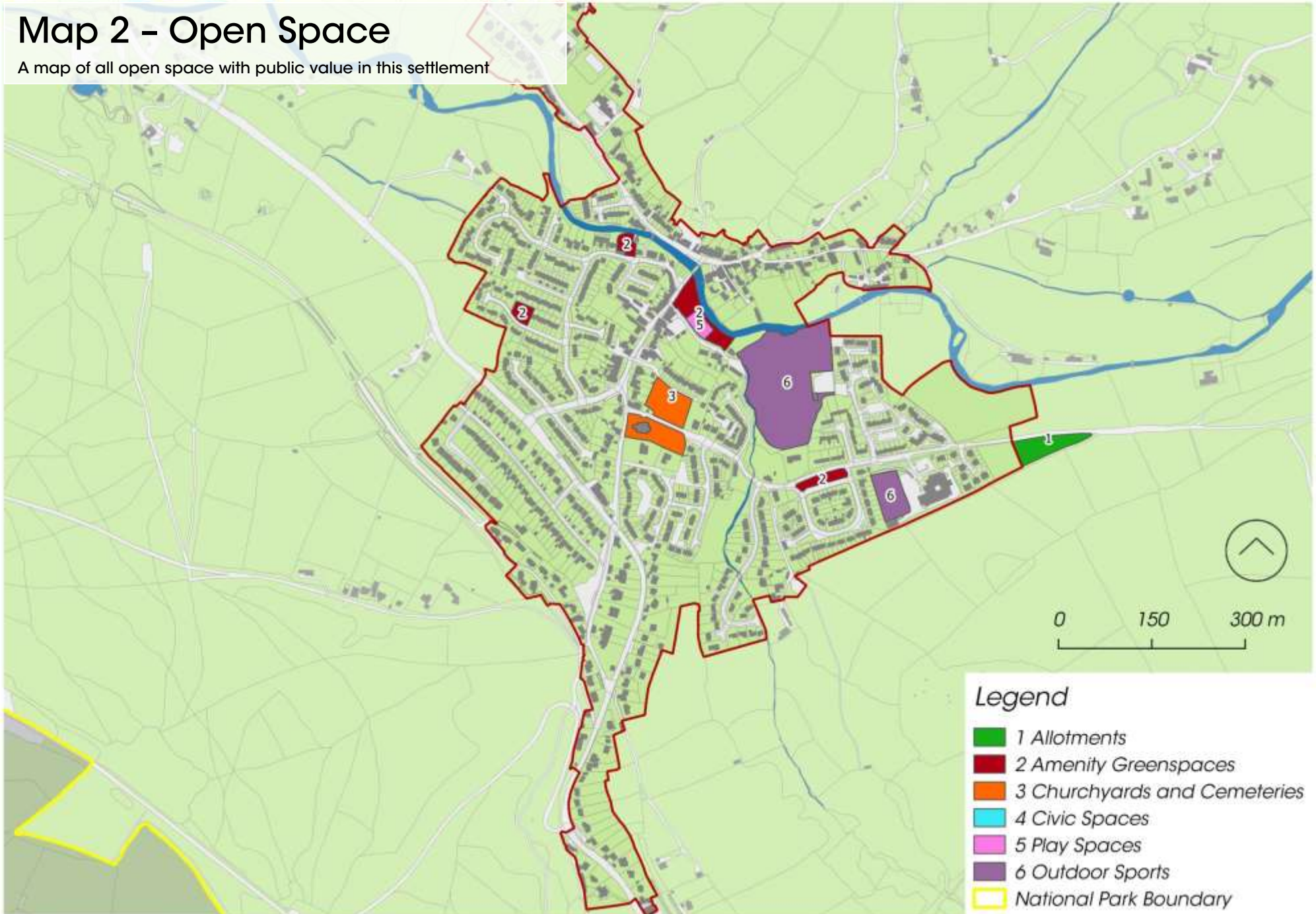
# Map 1 – Planning Considerations

A map of key policy designations affecting planning decisions in this settlement



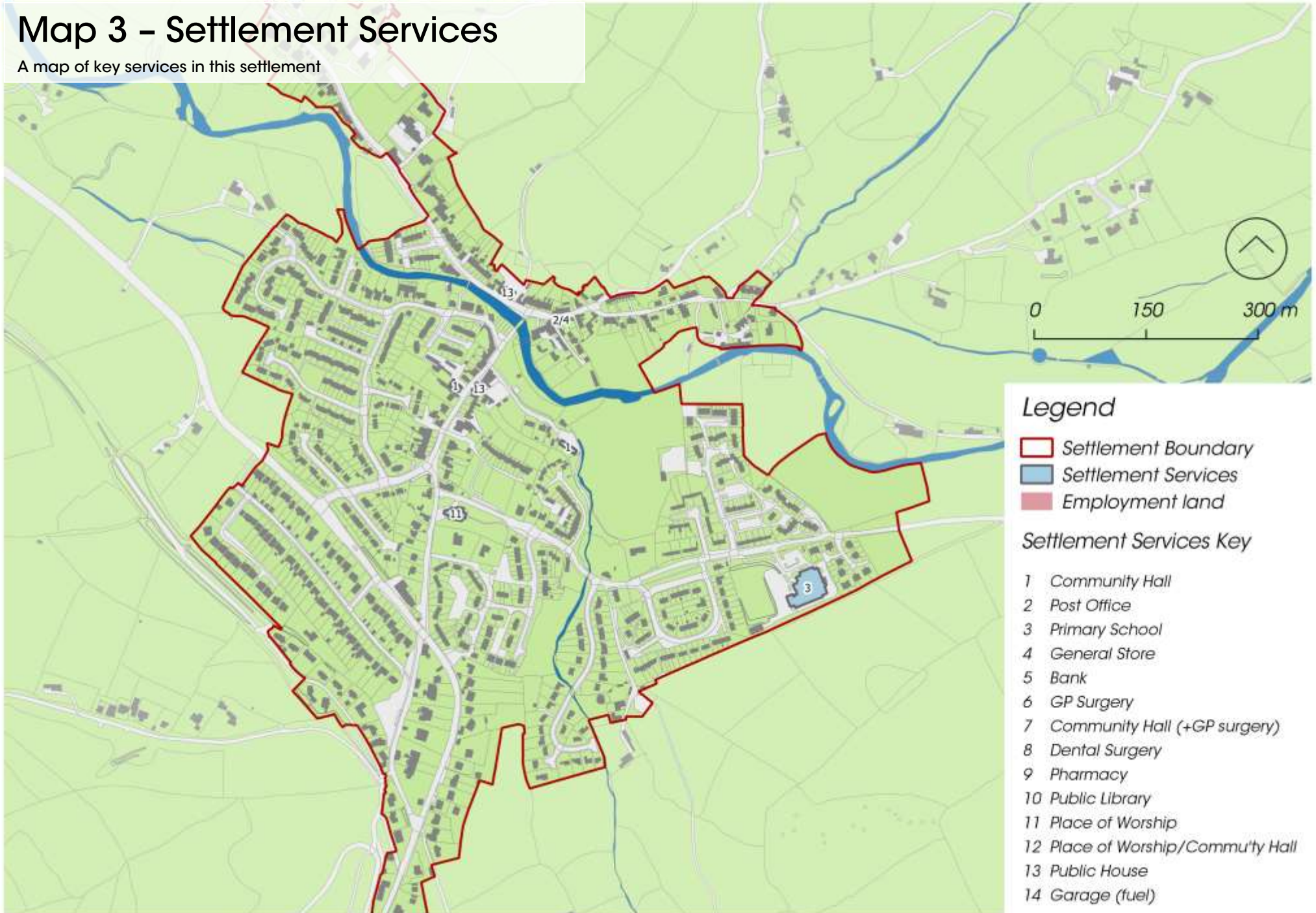
# Map 2 - Open Space

A map of all open space with public value in this settlement



# Map 3 – Settlement Services

A map of key services in this settlement





## Outgoing Bus Services

No.	Route	Days	Times <sup>1</sup>	Frequency <sup>1</sup>
1	Horrabridge - Tavistock	Mon-Sat	0641-2342	1 / 30 mins
		Sun	0942-2142	1 / hour
	Horrabridge- Plymouth Via Derriford	Mon-Sat	0658-2212	1 / 30 mins
		Sun	0913-2012	1 / hour
45	Horrabridge - Tavistock	Mon-Sat	0517-1622	1 / 2 hours
	Horrabridge - Plymouth Via Woolwell	Mon-Sat	0731-1951	1 / 3 hours
55	Horrabridge- Crapstone Via Milton Combe	Mon-Sat	1308	1
X1	Horrabridge - Tavistock	Mon-Sat	0723-1919	1 / 30 mins
	Horrabridge- Plymouth Via Woolwell	Mon-Sat	0608-1832	1 / 30 mins

<sup>1</sup> Indicative only, times should not be relied upon and will be subject to change

## Method of Travelling to work (Census 2011)

