



DARTMOOR LOCAL PLAN

guiding planning applications in Dartmoor National Park

Settlement Profile:

Drewsteignton

September 2019

This settlement profile has been prepared by Dartmoor National Park Authority to provide an overview of key information and issues for the settlement. It has been prepared in consultation with Parish/Town Councils and will be updated as necessary.



Introduction

Drewsteignton, located in the northeast part of the National Park, is set in an elevated position, north of the River Teign. Lying outside the granite mass of the high moor, the area has a complex geology; the working of limestone and metalliferous minerals played an important role in the development of the village. Originally a service centre for the surrounding agricultural community, that role has now declined.

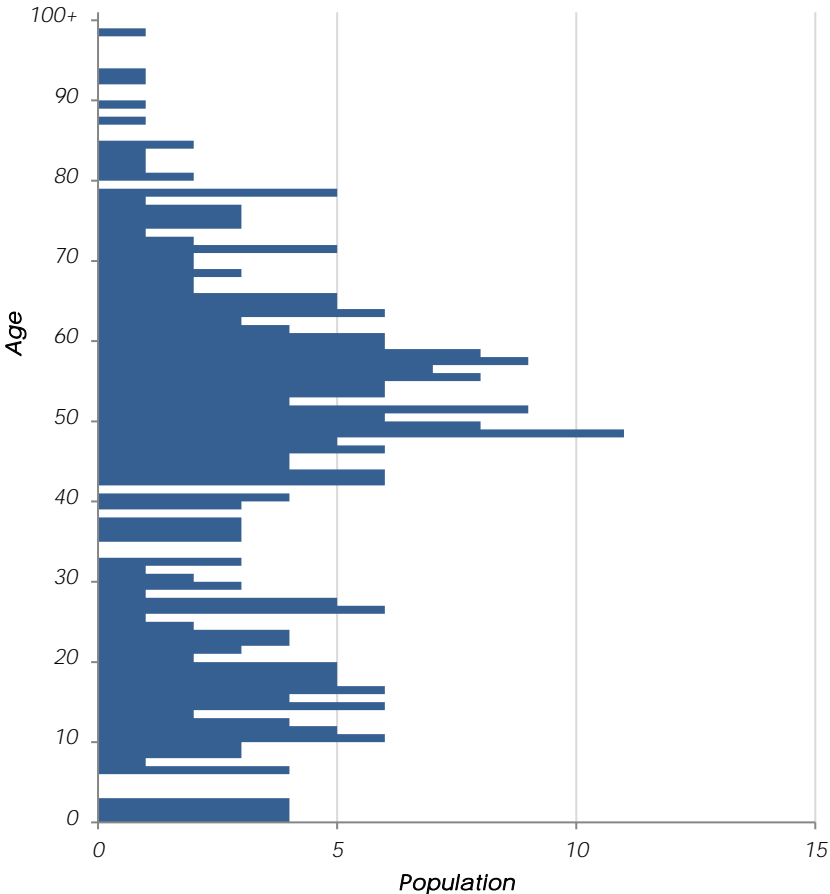
Below the village, on the River Teign, lies the popular beauty spot of Fingle Bridge. Castle Drogo, another busy tourist attraction, lies to the south-west of the village.



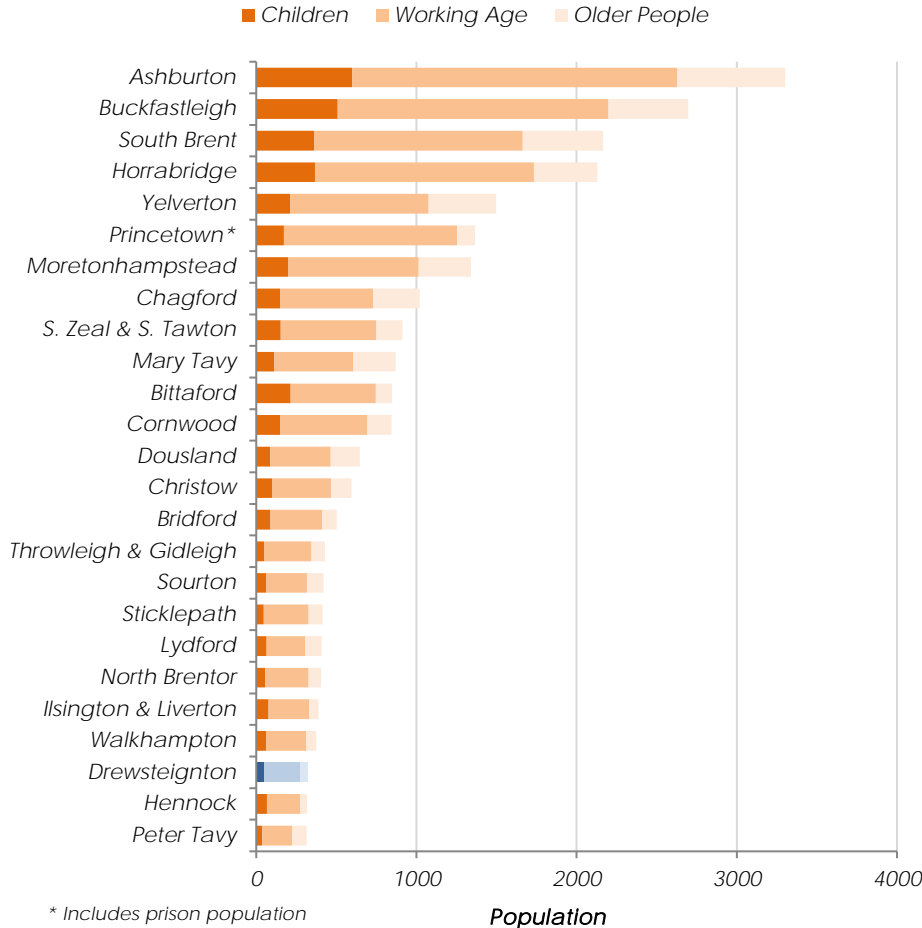
Population 318

Census 2011, defined by best-fit Output Areas

Age Profile (Census 2011)

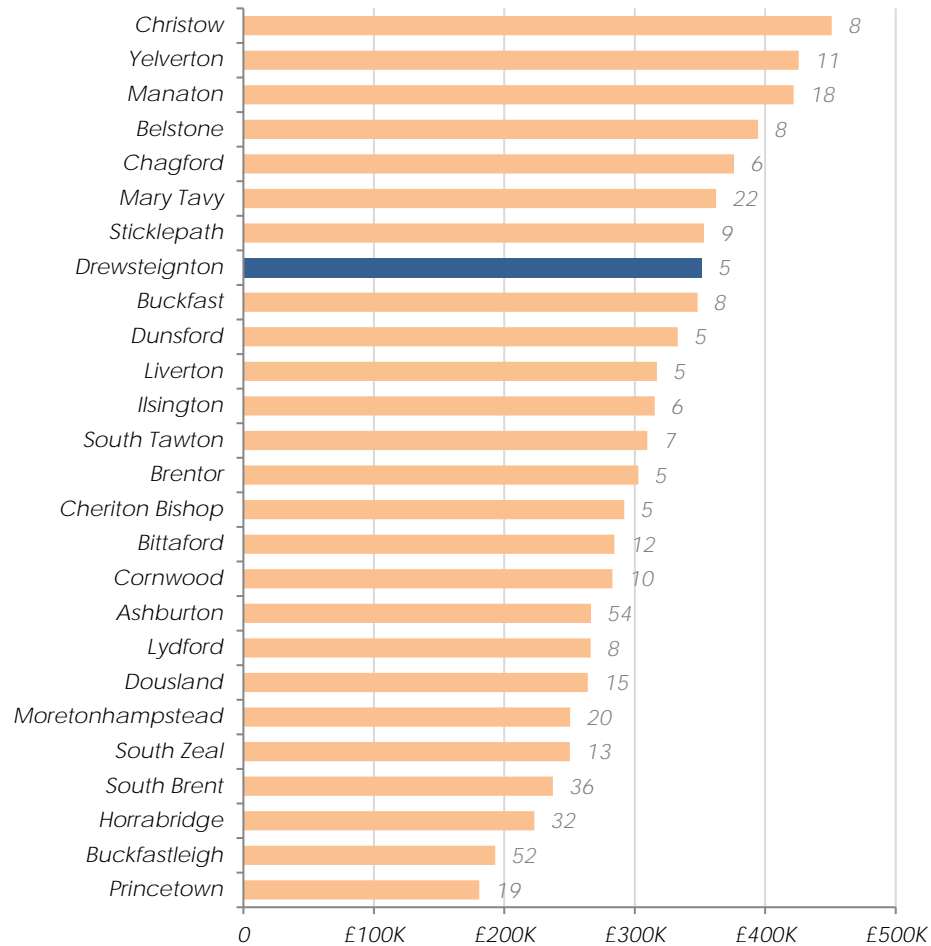


Settlement comparison (Census 2011)



Average House Prices 2016

Excluding settlements with less than five sales, number of sales labelled.



Land Registry, 2016

Identifying Housing Need

Drewsteignton's affordable housing need will be identified from housing need within the following Parishes:

Drewsteignton

Sites allocated for development in current local plan:

No sites allocated for development

5 affordable units have been delivered on other sites since 2008

August 2007 Housing Needs Assessment for Drewsteignton Parish recommended:

11 affordable homes needed within Parish

3 one-bed, 3 two-bed and 5 three-bed

7 rented accommodation and 4 shared ownership

Issues Paper Consultation (Dec 2016)

The following summarises issues identified by the Parish Council, and residents:

- *Support for small scale development*
- *Prioritise brown-field development*
- *Support for conversion and re-use of redundant historic agricultural buildings*
- *Support accommodation for home working*
- *Support improved superfast broadband access, mobile phone coverage and public transport services*

Infrastructure delivery

We are aware of the following items of infrastructure which are needed and have a reasonable prospect of being funded in the next 20 years:

- *None known*

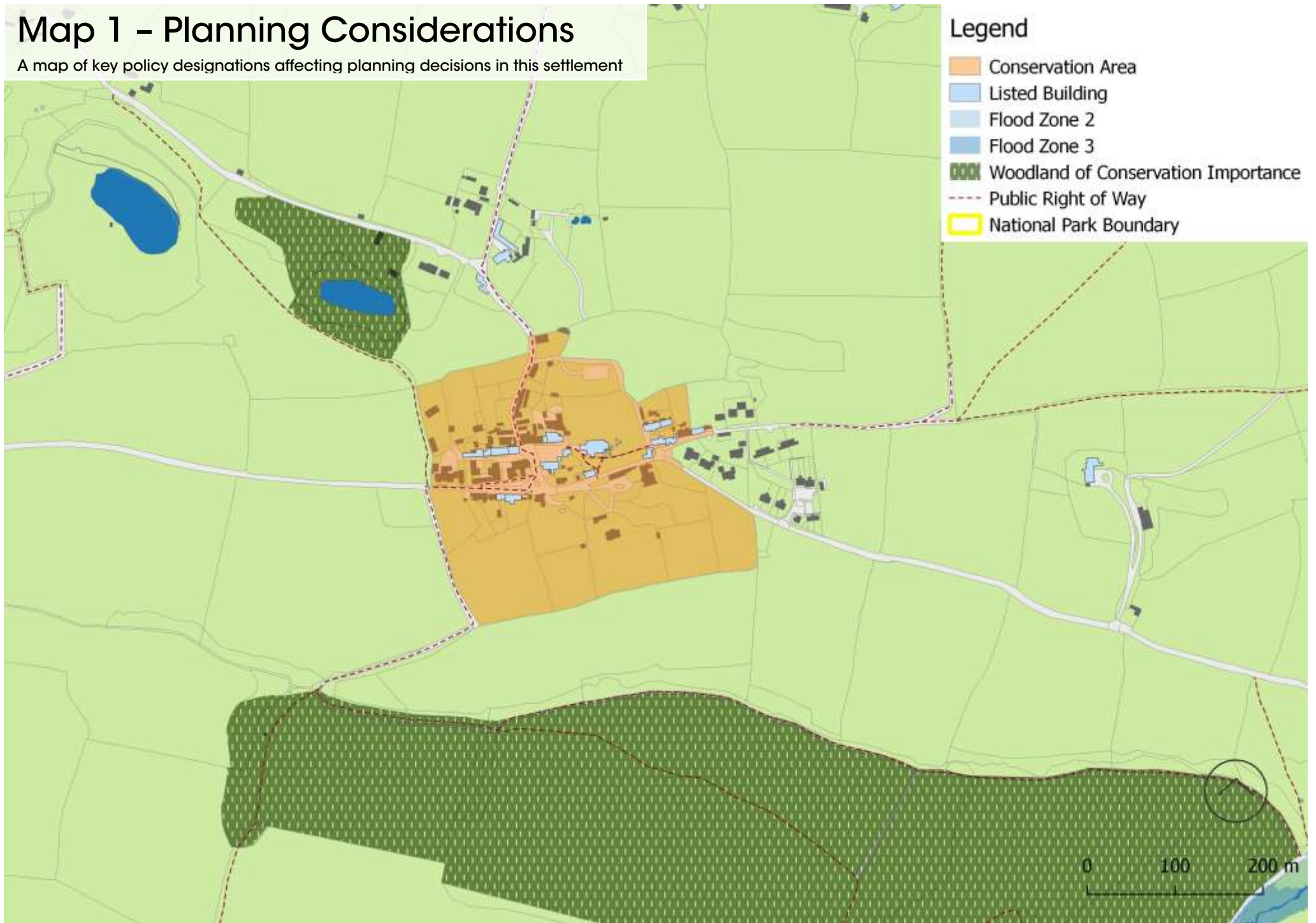
Open Space, Sport and Recreation

We are aware of the following priorities for improving Open Space, Sport and Recreation facilities:

- *None known*

Map 1 – Planning Considerations

A map of key policy designations affecting planning decisions in this settlement



Map 2 - Open Space

A map of all open space with public value in this settlement



Settlement Services and Connectivity

Information on this settlement's services and how well connected it is

Settlement Services

Settlement	U-Road	B-Road	A-Road	Garage (fuel)	Pharmacy	Branch Surgery	Health Centre	Pub	Church	Children's Play Area	Recreation Ground	Regular Bus Service	Primary School	Village Hall	Village Store	Post Office
Drewsteignton	✓	✓	✗	✗	✗	✗	✗	✗	✓	✓	✓	✓	✗	✗	✗	✗

If no, distance to nearest >5km >5km

Method of Travelling to work (Census 2011)

