

DARTMOOR NATIONAL PARK AUTHORITY

14 June 2019

MORE MOOR OTTERS DARTMOOR PUBLIC ARTS INITIATIVEReport of Marketing and Fundraising Officer

Recommendation: That Members discuss and select one of the two options presented as the sculpture for the public arts trail project.

1 Background

- 1.1 Members have agreed to support the development of a public arts trail for 2020 and allocate £120,000 from reserve balances.
- 1.2 The arts trail will consist of 80 models split into four sustainable trails of approx. 15 models each, solely on Dartmoor to ensure the trails are suitable in length for a day out and do not involve extensive travel around the county. The remaining models will be placed at locations to draw people on to Dartmoor and to publicise the trails, eg transport hubs and towns within 30 mins travel time from the moor.
- 1.3 At the Authority meeting on 10 May 2019, Members requested that the Authority approves the sculpture design for the arts trail and the Steering Group was tasked with submitting recommendations to Authority at the next meeting.

2 Proposed Sculpture Models

- 2.1 The group met and discussed the merits of the existing otter model and why it had worked so well for the previous Public Arts project. The group noted comments for keeping the existing model, namely:
 - It would save on production costs as the mold exists
 - The recognisable brand identity that Moor Otters has, saving on design costs
- 2.2 The group discussed the pros and cons of keeping the model the same, expressing some concern that collectors may want to purchase a different type of model rather than exactly the same, even if it were decorated in a different way. They agreed the model had worked well both logistically with its size creating a small footprint and also its appeal with regard to facial features and 'meerkat' type properties. This made its appeal strong to people doing the trail and collectors.
- 2.3 Different animal options were considered, but the group felt that perhaps a variant of the existing otter sculpture would be the best option to consider. It decided that having the same model, but with an otter pup attached to it, integral to the sculpture would be a good option to consider. This fitted with the 'More Moor Otters' title for the project and meant that collectors could potentially have a 'family'.

3 Model Options

- 3.1 The Steering Group agreed on two model options for Members to consider:
 - A) Original; the same sculpture as 2017

- B) Otter and pup; similar in style, size and look with an adult otter embracing/ sheltering a pup

Sketch designs of proposed Otter and Pup and images of the existing Otter model will be available at the meeting.

3.2 The Pros and Cons of each model are shown in the chart below:

	Pros	Cons
Both Models	<p>Proven successful</p> <p>Can build on last arts trail as Moor Otter brand is still relevant and already established</p> <p>Upright model is easy and more cost effective to transport, store and more practical to locate for the trail</p> <p>Can tell a positive story: Otters have made a come-back in the south west and Dartmoor rivers are an important stronghold. Otters are globally threatened and listed in the European Habitats Directive.</p> <p>Has a humanised persona which is endearing and engaging</p>	<p>Otter fatigue</p>
Existing Otter Model	<p>Already proven to be a success</p> <p>Artists found it a creative and inspiring canvas as shown through the otters that were created</p> <p>Businesses know it was a successful arts trail</p>	<p>People may want a change (although the previous trail will have been three years ago)</p> <p>Collectors may want a change in model (though we do not have evidence of more than one buyer being a collector)</p> <p>There are some otters in businesses from the previous trail.</p>
Otter and Pup Model	<p>Extends the family for collectors and visitors</p> <p>Should give artists as much creative inspiration as the solo otter</p> <p>Different from 2017</p> <p>Fits with project title More Moor Otters</p> <p>Has 'cute' factor for visitors</p>	<p>More expensive to produce</p> <p>Likely be slightly heavier than solo otter (but this is only relevant for outreach vehicle and can be mitigated with special plinth)</p> <p>Businesses may be less confident with a different model. (Though this is unlikely as it is still the same concept/animal)</p> <p>Smaller version trickier for schools to decorate.</p>

4 Anticipated Costs

- 4.1 Costs are an estimate only at this stage. The total difference in cost between the two models is approximately £3,800 (£4,500 inc vat), with the Otter and Pup model being the more expensive. These figures are subject to receiving a final written quotation in accordance with our financial procedures.

5 Recommendation

- 5.1 That Members discuss and agree on their preferred option for the public arts trail 2020.

SOPHIE JAMES

Dartmoor National Park Authority

14 June 2019

CONNECTING DARTMOOR & EXMOOR

Report of the Communities Officer

Recommendation: **That Members note the contents of the report.**

1 Introduction

- 1.1 The Authority recognises the importance of superfast broadband to the socio-economic well-being of local businesses and communities in the National Park.
- 1.2 To this end, it has been working closely with Connecting Devon and Somerset (CDS), a partnership set up to deliver next generation broadband infrastructure to areas where the market has failed to invest in Devon. Led by local government, it brings together local authorities, Broadband Deliver UK (BDUK), and the private sector.

2 Background

- 2.1 Prior to 2013 and phase 1 of the Connecting Devon and Somerset programme, broadband provision on Dartmoor was limited to satellite and some wifi coverage of hamlets, none of which was Next Generation Access (NGA) compliant i.e. able to receive speeds of 24mbps and above.
- 2.2 Largely completed by 2017, Phase 1 was delivered by Openreach using mainly fibre to the cabinet (FTTC) technology. The remote rural areas of Dartmoor and Exmoor proved to be particularly 'hard to reach' with a fibre based solution and coverage for the two National Parks remained significantly less than for the CDS area as a whole. This was improved when additional funding of over £700,000 was secured for Dartmoor & Exmoor following the Authorities joint Rural Community Broadband Fund bid which enabled some additional fibre to the premise (FTTP).
- 2.3 Phase 1 has delivered superfast Broadband (24mbps+) access to over 280,000 businesses and homes across Devon and Somerset. Around 9,000 of these are on Dartmoor, improving connectivity to approximately 70% of Dartmoor's 17,385 premises (Appendix 1).

3 Connecting Dartmoor & Exmoor

- 3.1 Recognising network operators desire to work from 'inside out' and leave the least densely populated areas to last and the unique challenges presented by Dartmoor & Exmoor's topography, a separate procurement exercise was undertaken for the two National Parks for Phase 2.

- 3.2 Announced in July 2015, the 'Connecting Dartmoor & Exmoor' (CDE) programme secured an additional £4.2m of investment for the two moors in advance of the rest of Devon and Somerset phase 2 rollout.

4 Programme Partners

- 4.1 The programme, managed by CDS, is overseen by a partnership board consisting of representatives from Devon and Somerset County Councils, Dartmoor and Exmoor National Parks, West Somerset District, Heart of the South West Local Economic Partnership (HotSW LEP) and BDUK. Details of the funding package is given in the table below.

Funding Source	Funding Value
Devon County Council	£611,288
Somerset County Council	£611,288
Broadband Delivery UK	£2,122,575
Dartmoor National Park	£65,000
Exmoor National Park	£65,000
West Somerset Council	£70,000
HOSW LEP	£700,000
Total funding package	£4,245,150

5 Contract and Build

- 5.1 The contract awarded to Airband Community Internet Ltd (Airband) is to deliver a 30mbps + broadband service to an additional 4,794 premises in some of the most remote communities across both National Parks (Appendix 2). The contract with Airband is for a new fixed wireless network using point to point technology developed by Cambium, an international company based in Ashburton. The technology can push connections over long distances and offers coverage technically and financially unachievable by other means.
- 5.2 The Authority has worked closely with Airband to find the best locations for the radio transmitters to provide good coverage with minimal impact to the special qualities of the National Park. Around 60 have been installed on or around Dartmoor during the network rollout, many of which have required planning permission. It is testament to the constructive working relationship established that negotiations prior to application submission discouraged applications for unsuitable sites coming forward and indeed not one application was refused.
- 5.3 Build of the wireless network (the largest in England) completed in June 2018, later than originally anticipated. The installation of a large and complex network in such a challenging environment and topography as Dartmoor has not been without problems. Weather and ground conditions led to significant delay at the outset and later technological teething issues have now been resolved.
- 5.4 Following network completion work is continuing to assure the network is delivering the contracted coverage with a robust and reliable service and it is expected the contract will be closed in the coming months.

- 5.5 The contract was for Airband to install and maintain the network with other Internet Service Providers able to use the network to offer services to end users (domestic and business).

6 Social and Economic Impact

- 6.1 The benefits of superfast broadband are well rehearsed and its importance in reducing the impacts of rural isolation for both businesses and residents cannot be underestimated.
- 6.2 The availability of a superfast service has provided a step change in connectivity for those that have taken a service. One early taker of the service was Dartmoor Zoo which before the 'Connecting Dartmoor & Exmoor' programme found that poor connectivity, from juggling five separate landlines with a maximum broadband speed of 1.2mbs frequently compounded by regular line failure, was holding it back.
- 6.3 Benjamin Mee, Founder of Dartmoor Zoo explained *"We were having to drive to Plymouth to be able to connect to the internet or even send emails, it made our frequent 'We bought a Zoo' discussions with Hollywood frustrating, let alone trying to manage the day to day business of running a Zoo"*.
- 6.4 The service has also proven popular with Dartmoor farmers, Michael and Christine Malseed of Frenchbeer Farm took a service in April 2017. They now have a download speed of 30Mbps and an upload speed of 9Mbps – which has completely transformed how they can use the internet.
- 6.5 *"From a business point of view, it just speeded everything up...There are so many things we need to do online – things like auto-enrolment, and responding to emails – these things were almost impossible to do before. We order a lot online and when you are trying to sort out parts, you want to be able to have a good look at them and you don't want it to take forever. Having a good connection saves time and stress, which is so important when you're running your own business."* Christine Malseed.

7 Demand Stimulation and Get Up to Speed

- 7.1 In parallel with the infrastructure roll-out, the CDS funded 'Get Up to Speed' programme provided a wide range of demand stimulation sessions to support the take-up of the Airband service.
- 7.2 Beginning with a series of focussed introductory events to introduce residents of Dartmoor to both Airband as a company and fixed wireless as a technology, the Peninsula Cosmic-led programme supported by Airband and the National Parks delivered 56 sessions within the National Park, reaching 2,246 attendees.

8 Take up

- 8.1 Take up currently stands at 917 users taking a service via the Airband network, less than predicted at the outset of the project (1045 by June 2019, 1245 by June 2020) and of that across the wider CDS area which stands at around 50%.
- 8.2 Airband continues to actively promoting the service to users, including offering special deals and discounts, direct mailshots and event sponsorship such as Devon

County Show and Widecombe Fair, providing a Wi-Fi service for the fair ground. Free connection is also offered to community buildings/village halls and this has proved popular being taken up by Ilsington Hall, Scoriton Hall and South Brent Old School for example.

- 8.3 Airband has recognised the short fall and has undertaken research to help in identifying barriers to take-up these include existing contractual commitments, confidence in new technology and cost with a reluctance to relinquish land line. It has taken measures to help increase confidence by increasing support desk provision with longer operating hours and emergency provision and has re-profiled its packages to provide a starter package.
- 8.4 Airband and CDE partners are currently working on identifying additional steps to boost take up across Dartmoor and Exmoor. Geographically and sector targeted approaches, Community Champions and stronger marketing are all under consideration.

9 Beyond Connecting Dartmoor and Exmoor - What next?

- 9.1 The rollout of all broadband technology has value for money limitations. Airband has extended wireless coverage as far as currently possible through the phase 2 contract and within the funding available.
- 9.2 However, a significant number of premises on Dartmoor remain without access to superfast broadband provision of 30mbps or above. These remaining premises are generally fragmented and dispersed in the most geographically challenging areas of the National Park, necessitating a localised approach to finding solutions.
- 9.3 CDS is continuing to seek ways to extend coverage further with an ambition remaining of achieving 100% coverage across the CDS area by 2020.
- 9.4 Further work is already underway on Dartmoor through the Community Challenge Fund pilots at Harford and Lower Combe.

10 Community Challenge Fund - Harford & Lower Coombe, Scoriton

- 10.1 The Community Challenge Fund scheme enables local communities to select an approved private sector partner and co-produce creative broadband solutions that work best for them, with financial support and advice from CDS.
- 10.2 Pilots have been successfully trialled in Harford and Lower Combe in Devon with Openreach and Airband respectively. The scheme in Lower Combe utilises a fixed wireless back haul with a fixed fibre line serving each premise. Sally Sutton, a Lower Combe resident benefitting from the scheme, said: *"I don't think in this day and age anybody has a choice, you have to have the internet and it is whatever is available in your local area, but if you can get your community together and work on it together you've got a much better chance than trying to do it individually"*.
- 10.3 CDS is undertaking a consultation to identify private sector partners interested in working with local communities in an expanded scheme, with the intention to launch the scheme later this year.

11 Reinvestment of public investment

- 11.1 The Phase 1 contract had provisions to clawback public investment where take up (and therefore profit) was higher than anticipated. Take up of broadband services under the Phase 1 delivery has in fact exceeded expectations so clawback is expected. Proposals are being developed for applying these reinvestment sums and other funding opportunities to extend broadband coverage across the region in areas which do not yet have provision.

12 What next?

- 12.1 Work will continue over the summer to map and identify further target areas for intervention on Dartmoor following on from the rollout of phase 1 and 2 and any additional coverage achieved through clawback and other additional funding. This, alongside similar work looking at mobile coverage opportunities will place Dartmoor in a good position to take advantage of any additional programme funding opportunities as they become available.
- 12.2 The extended CDS Community Challenge Fund, Openreach's Community Fibre Partnership and the Government's Rural Gigabit Connectivity Programme all present possible opportunities to further extend or enhance the superfast broadband provision on Dartmoor.

13 Financial Implications

- 13.1 The Authority has contributed £65,000 from its reserves to the £4.3m Connecting Dartmoor and Exmoor Programme.

14 Conclusion

- 14.1 Working together, Dartmoor and Exmoor National Park Authorities secured, through partnership working with Connecting Devon and Somerset, a £4.2m investment in the two National Parks to improve superfast broadband connections.
- 14.2 The Phase 2 Connection of the Dartmoor and Exmoor programme has resulted in a significant increase in access to superfast broadband for Dartmoor residents and businesses. Without this programme the majority of those residents and businesses would, in all likelihood, still be waiting for improved broadband connections.
- 14.3 The project was not without its challenges. The complexity of the fixed wireless network and the challenges of accommodating this within a National Park landscape did take time to get right and were under-estimated at the outset. However, the achievement in delivering superfast broadband to some of our most remote and isolated areas in a way that has respected and had minimal impact on Dartmoor's special qualities should be celebrated.
- 14.4 The Authority worked to not only secure the Connecting Dartmoor and Exmoor programme but also to support deployment by providing planning advice and helping to facilitate delivery through our local knowledge and relationships.

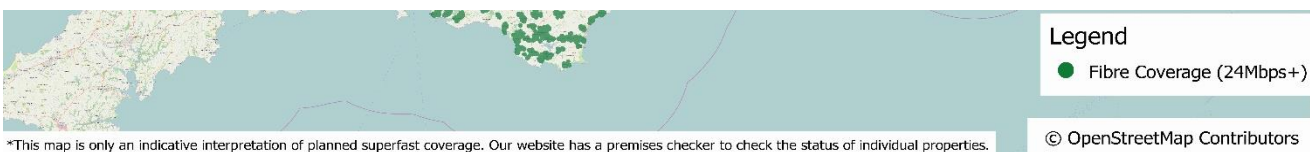
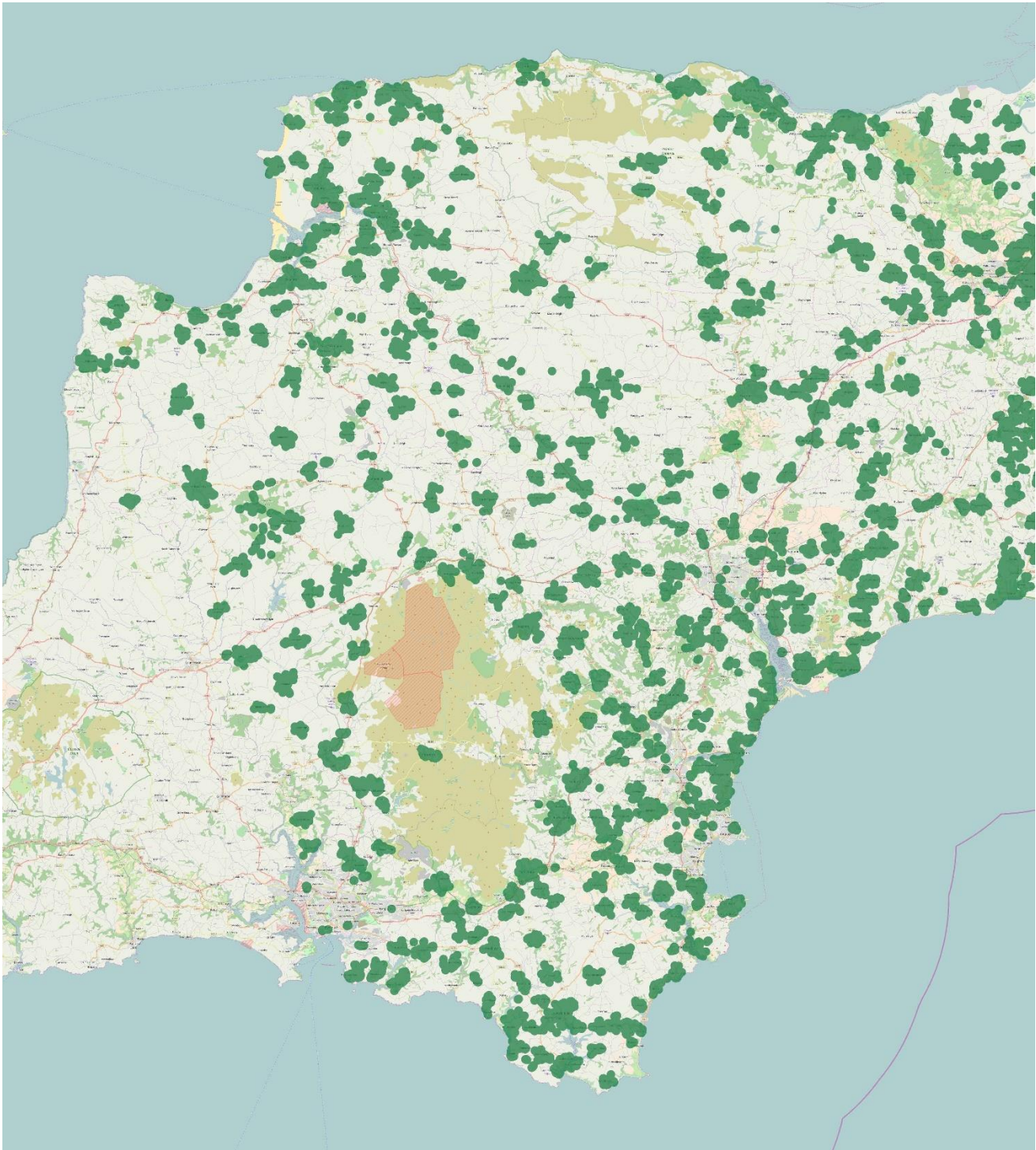
- 14.5 Remaining challenges include increasing take-up of this network and ensuring it is used to support local businesses and communities; and securing solutions for those premises that remain without superfast broadband.

JOANNA RUMBLE

Attachments: **Appendix 1 - Map - CDS Phase 1 Network Coverage**
 Appendix 2 - Map - CDE Network Coverage

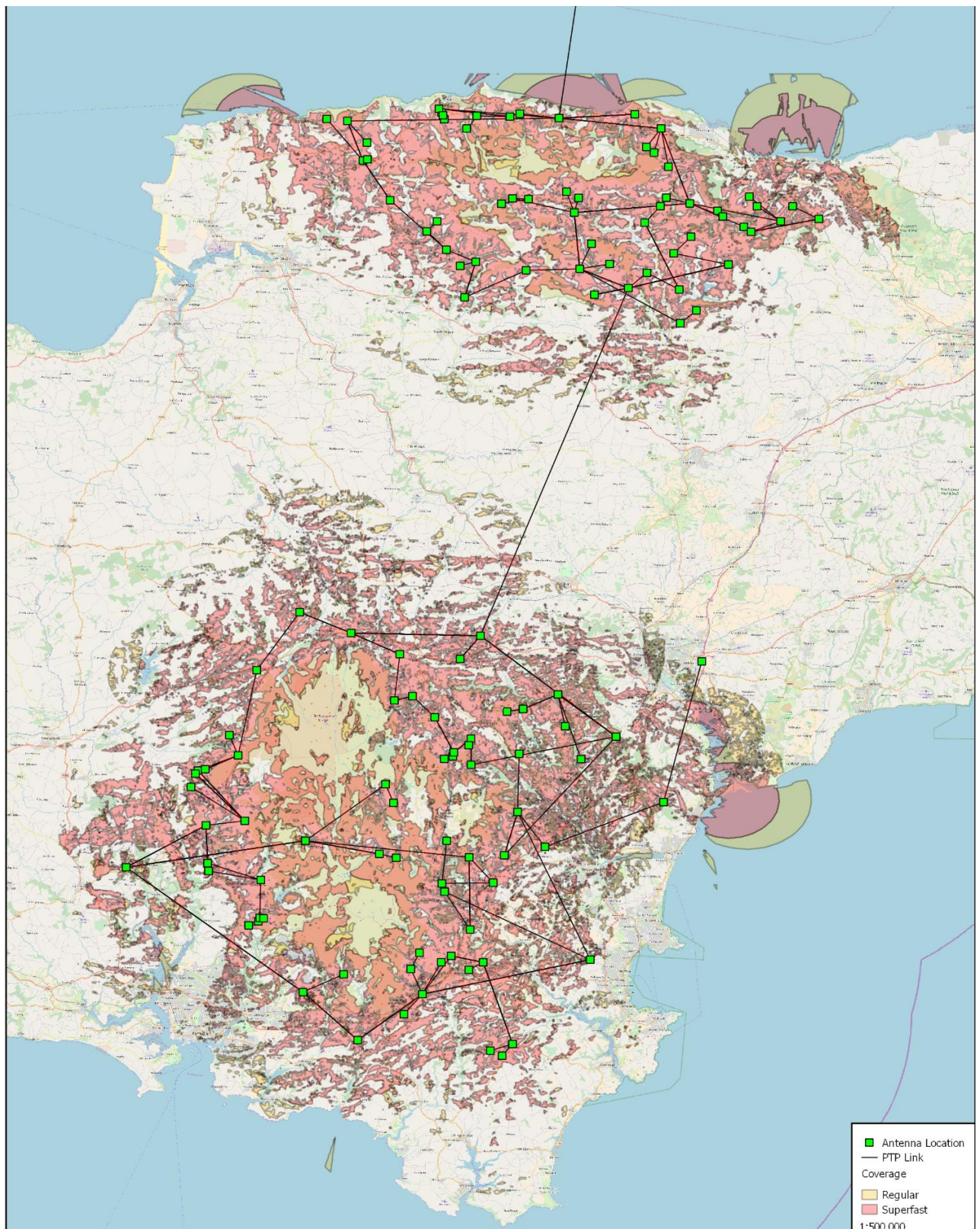
20190614 JR – Connecting Dartmoor and Exmoor

Conecting Devon & Somerset – Phase 1 Network Coverage for Dartmoor & Exmoor



*This map is only an indicative interpretation of planned superfast coverage. Our website has a premises checker to check the status of individual properties.

Phase 2 - Connecting Dartmoor and Exmoor - Area coverage of Network



DARTMOOR NATIONAL PARK PLANNING AUTHORITY

14 June 2019

**TREE PRESERVATION ORDERS, SECTION 211 NOTIFICATIONS (WORKS TO TREES
IN CONSERVATION AREAS) AND HEDGEROW REMOVAL NOTICES DETERMINED
UNDER DELEGATED POWERS**

Report of the Trees and Landscape Officer

Recommendation: **That the decisions be noted.**

TPO APPLICATIONS

Teignbridge

West Devon

Ref: 18/0076 10 Grange Road, Yelverton SX 5183 6815

Application to reduce the height of 3 oak trees. Consent was granted subject to conditions:

1. Five working days' notice to be given to the Authority prior to the commencement of approved works.
2. All works are carried out in accordance with British Standard 3998:2010 Tree Work - Recommendations.

Ref: 18/0081 Okehampton Castle SX 5830 9430

Application to fell seven trees and carry out remedial works on ten others. The trees are in very poor condition. Consent was granted subject to conditions:

1. Five working days' notice to be given to the Authority prior to the commencement of approved works.
2. All works are carried out in accordance with British Standard 3998:2010 Tree Work - Recommendations.
3. Replacement planting of seven native trees within the crown spread of the originals during the first season following felling.

Ref: 19/0002 Michaelmas House, Yelverton SX 5080 6824

Application to reduce the crown of a mature ash tree. Consent was granted subject to conditions:

1. Five working days' notice to be given to the Authority prior to the commencement of approved works.
2. All works are carried out in accordance with British Standard 3998:2010 Tree Work - Recommendations.

SECTION 211 NOTICES

Teignbridge

Ref: 18/0078 St Andrew's Church, Ashburton SX 7548 6977

Notification to reduce a cedar and redwood. The works are required to remove storm damaged branches.

A Tree Preservation Order has not been made.

Ref: 18/0080 The Old Rectory, Widecombe SX 7180 7672

Notification to fell a horse chestnut. The tree has numerous large cavities and is infected with honey fungus.

A Tree Preservation Order has not been made.

Ref: 18/0082 Glebe House, North Bovey SX 7405 8399

Notification to fell a cypress and reduce the crowns of a horse chestnut, sweet chestnut and eucalyptus. The works will have minimal impact on the character of the Conservation Area.

A Tree Preservation Order has not been made.

West Devon

Ref: 18/0077 Monte Rosa Chagford SX 7018 8780

Notification to reduce a yew and fell a magnolia. The works will have minimal impact on the character of the Conservation Area.

A Tree Preservation Order has not been made.

Ref: 18/0079 Moor Park, Chagford SX 7018 8784

Notification to reduce two beech trees. The works are minor and will have minimal impact on the health or appearance of the trees.

A Tree Preservation Order has not been made.

Ref: 19/0001 3 The Oaks, Mary Tavy SX 5042 7942

Notification to reduce an oak tree. The works are minor and will have minimal impact on the health or appearance of the tree.

A Tree Preservation Order has not been made.

BRIAN BEASLEY