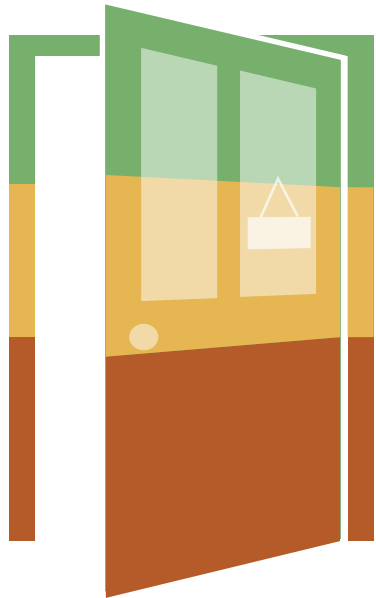


Dartmoor Coronavirus business survey

In May 2020 Dartmoor National Park Authority conducted a business survey during the Coronavirus lockdown to inform a recovery plan for Dartmoor. Over 200 local businesses responded.

For more information visit: dartmoor.gov.uk/living-and-working/business

Current trading status and businesses plans to reopen



30% open as usual

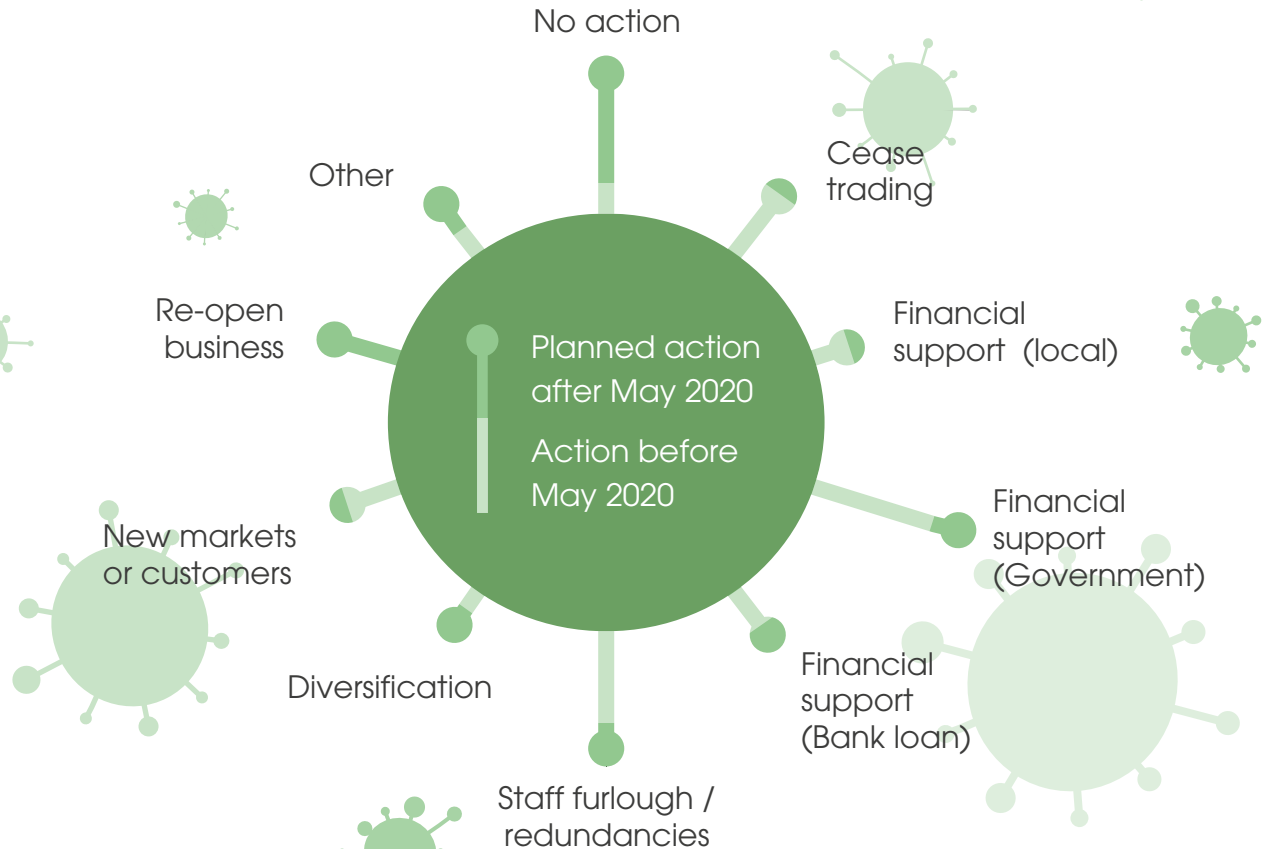
30% part trading

Planning to reopen:
60% immediately
11% within 3 months
5.3% longer

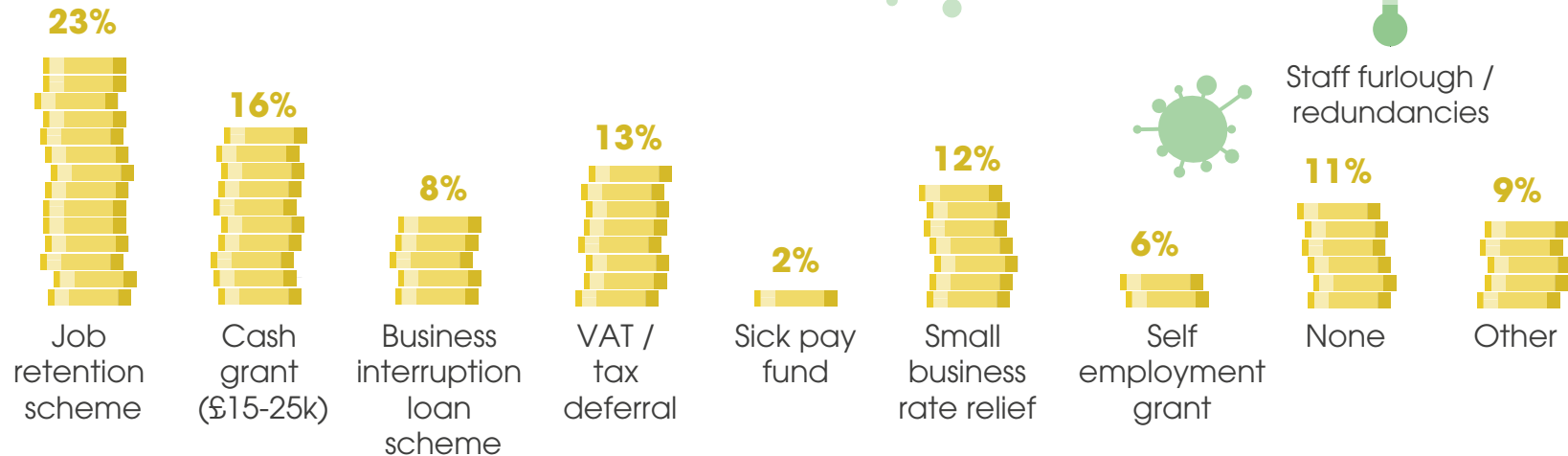
40% ceased trading

Planning to reopen:
18% immediately
39% within 3 months
11.7% longer

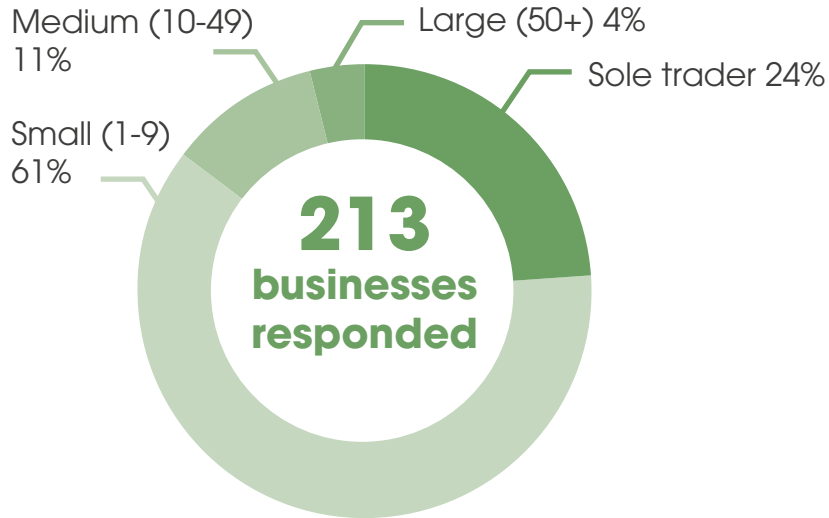
Actions taken and planned by businesses



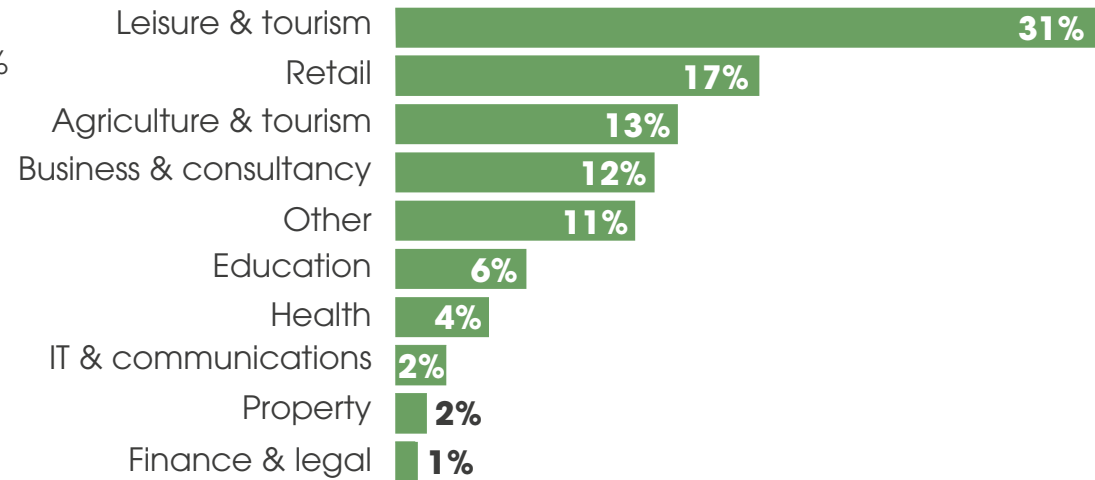
Financial support accessed by businesses



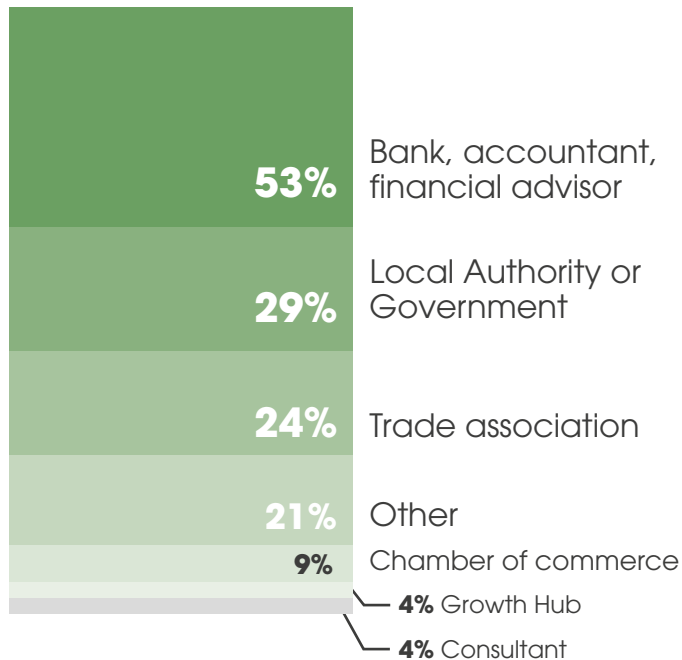
Respondent size



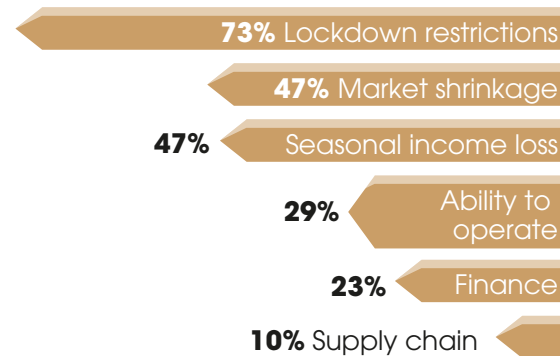
Respondent type



Where businesses have sought advice from



Key barriers businesses believe will prevent their recovery



Key actions businesses believe will enable their recovery

